

5 YEARS OF FERMI COMMUNICATIONS AND PUBLIC OUTREACH

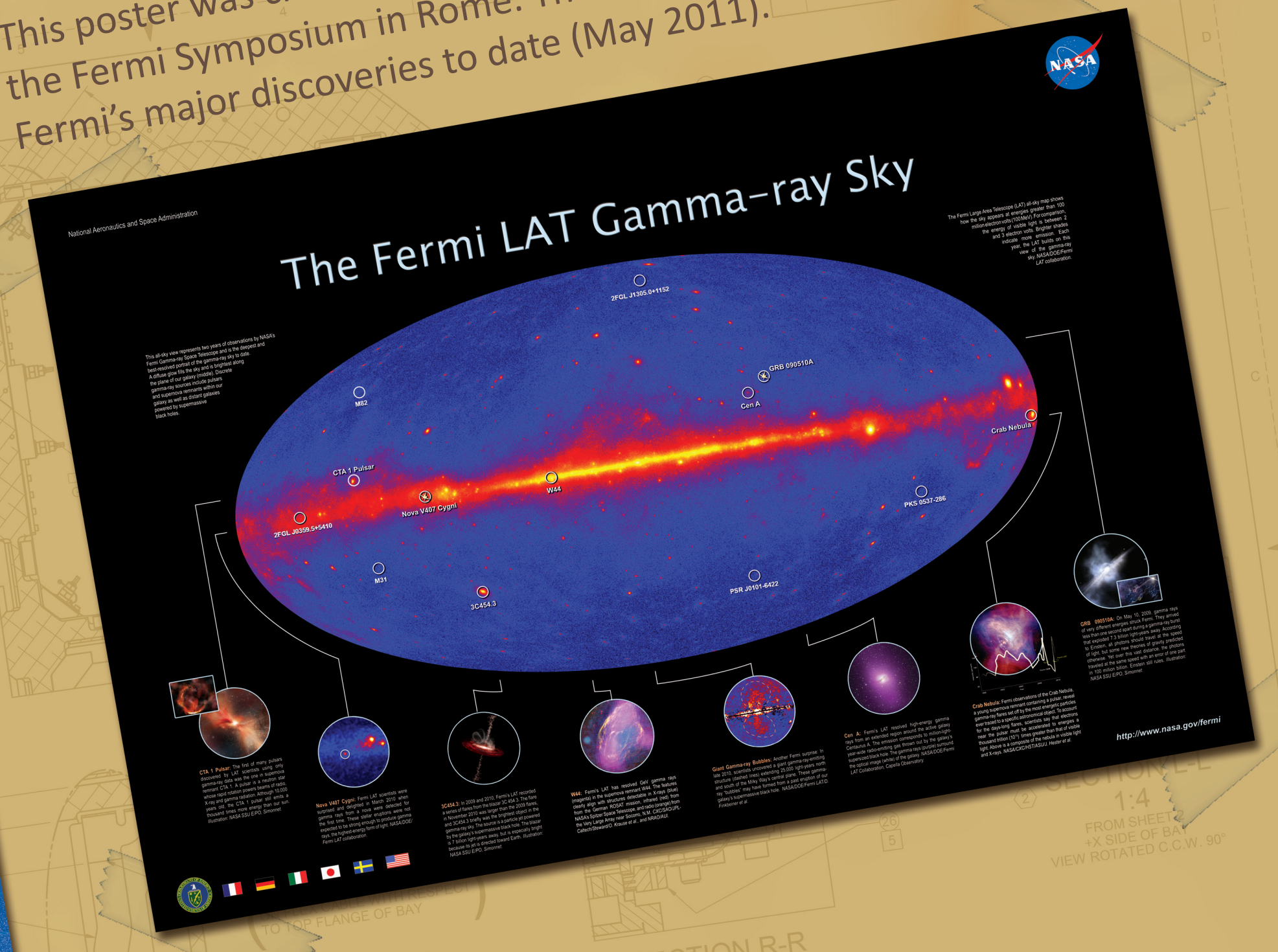
The Sonoma State University (SSU) Education and Public Outreach (E/PO) group participates in the planning and execution of press conferences that feature noteworthy discoveries, as well as supporting social media and outreach websites. We have also created many scientific illustrations for the media, tools for amateur astronomers for use at star parties, and have given numerous public talks about Fermi discoveries.

www.nasa.gov/fermi

Lynn R Cominsky, Aurore Simonnet and the Fermi E/PO team

FERMI SKYMAP POSTER

This poster was created in 2011 by Aurore Simonnet for distribution at the Fermi Symposium in Rome. The skymap is annotated to describe Fermi's major discoveries to date (May 2011).



SCIENCE MAGAZINE COVERS

Fermi discoveries in 2009 and 2014 were the subject of cover stories in Science magazine. Illustrations by Aurore Simonnet that depicted the discoveries were chosen for cover art. The 2009 publications featured Fermi observations of pulsars while the 2014 cover illustrated GRB 130427A, one of the brightest gamma-ray bursts ever seen. This GRB was observed by a flotilla of experiments on Earth and in space, including Fermi.



The Fermi banner stand, designed by Aurore Simonnet, is often found at scientific conferences and other public events.

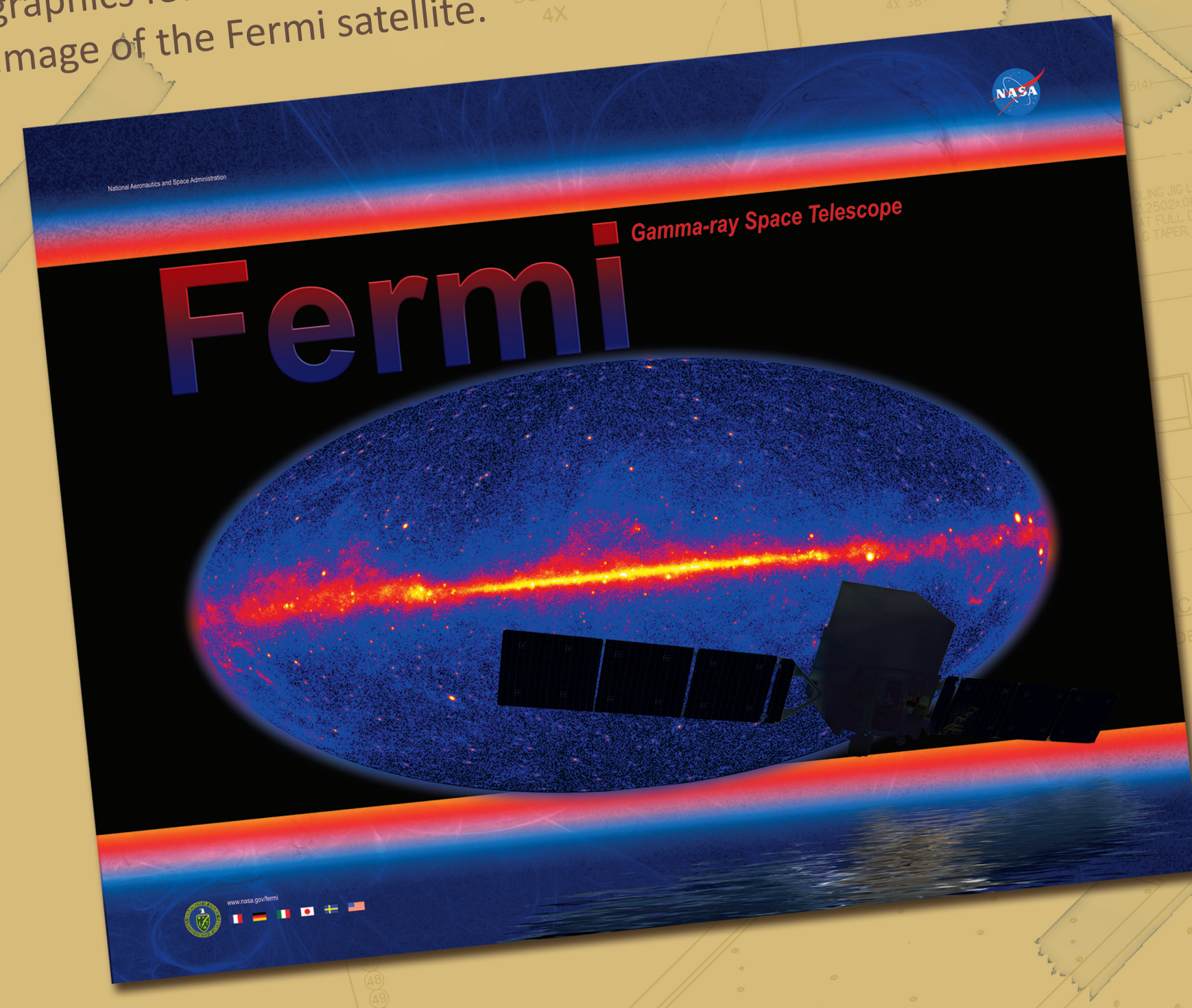
CITIZEN SCIENCE

The collaboration between Fermi and the Laser Interferometer Gravitational-wave Observatory's Einstein@Home project was advertised with this postcard-sized handout inviting participants to try to discover a gamma-ray pulsar using Fermi data. Several have been discovered as a result of this partnership!



FERMI BOOTH GRAPHICS

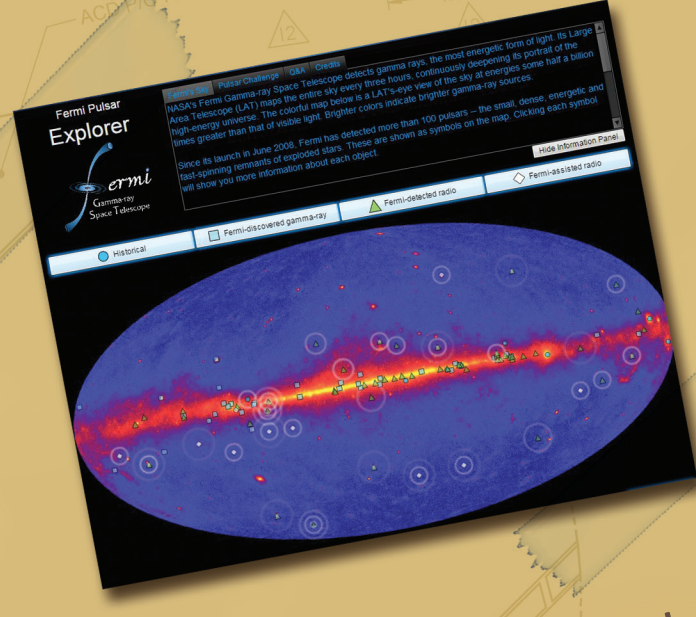
The Fermi exhibit booth has undergone many transformations over the years. The most recent booth graphics features the Fermi skymap silhouetted with an image of the Fermi satellite.



FERMI PULSAR EXPLORER

<http://www.nasa.gov/externalflash/fermipulsar/>

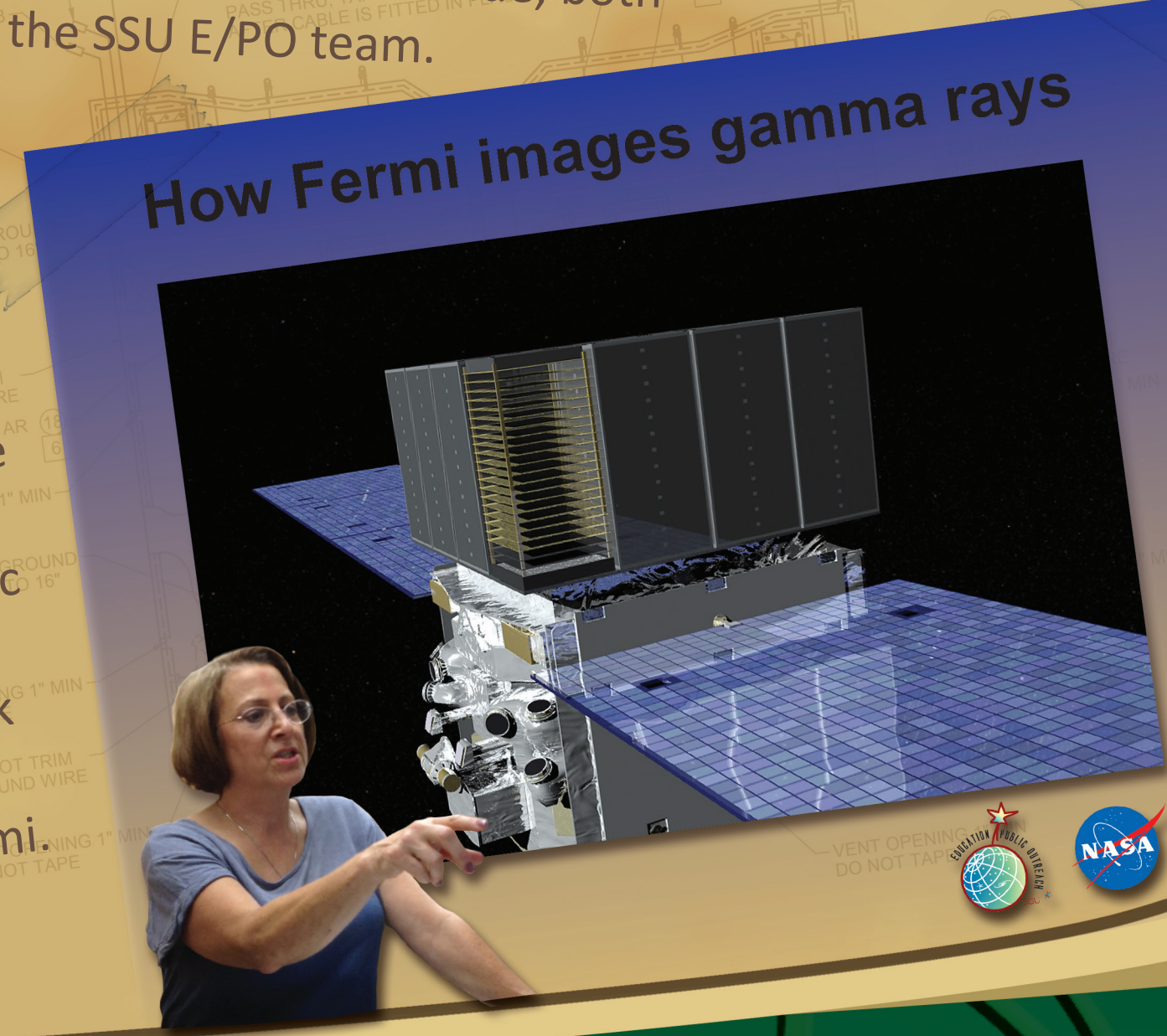
Developed by Kevin John, this interactive map illustrated the Fermi pulsar discoveries that were highlighted in a media telecon on 11/3/11. For each pulsar observed by Fermi, the interactive provides the pulse rate, location and a user-friendly description of the pulsar's significant observations.



PUBLIC TALKS AND MORE

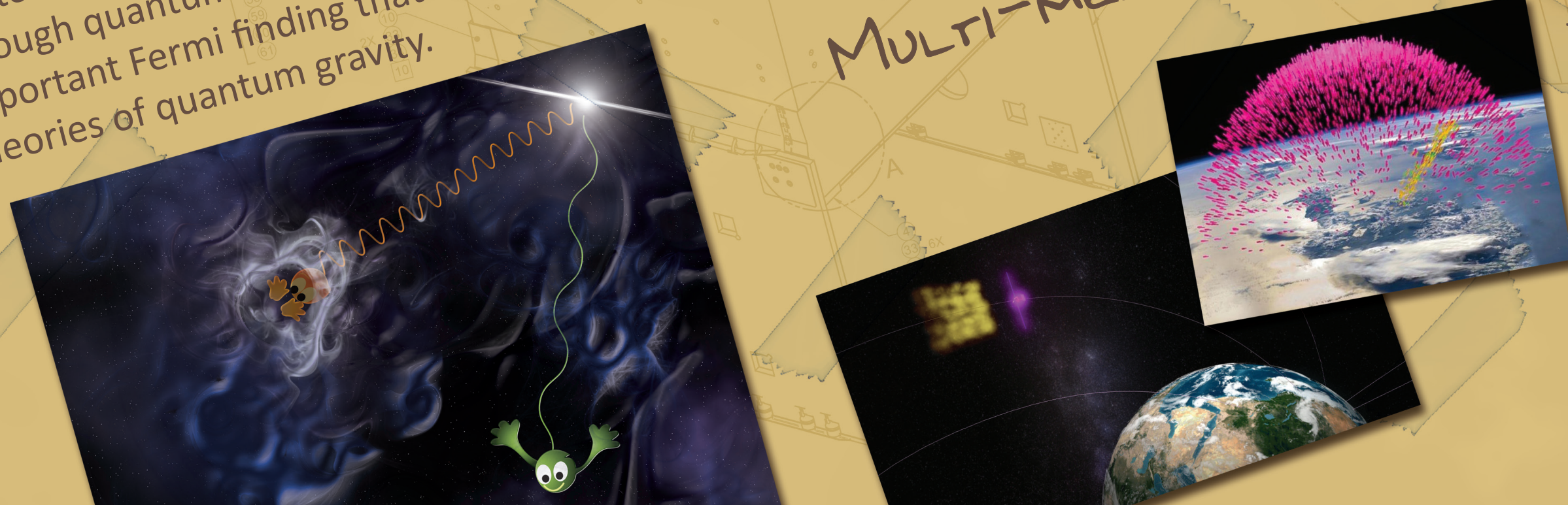
Lucy and Abby Dilbeck demonstrate how to make pulsar models at the SLAC/KIPAC Open House in May 2014. The "make your own pulsar model" activity is one of Fermi's most popular public engagements, and was originally featured on the back of the Fermi lithograph and in the Supernova Educator's Guide, both developed by the SSU E/PO team.

From the top of Mt. Tamalpais to seniors in Oakmont to amateur astronomers all across the USA, Prof. Lynn Cominsky has given dozens of public lectures about "Blazing Galaxies, Monstrous Black Holes" and the "Extreme Universe" as seen by Fermi.



Photons of different energies race through quantum foam to illustrate an important Fermi finding that constrained theories of quantum gravity.

MULTI-MEDIA



All animated media products that have been created for Fermi news releases or features are also distributed through NASA's YouTube channel. That includes the telecon on January 10, 2011, which showcased "Thunderstorms Hurling Antimatter into Space."

Goddard Science Jamboree