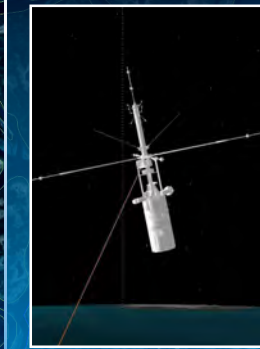
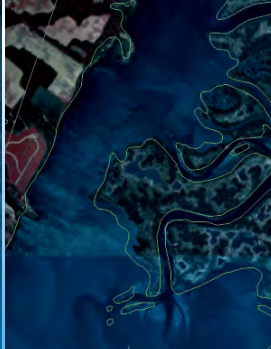
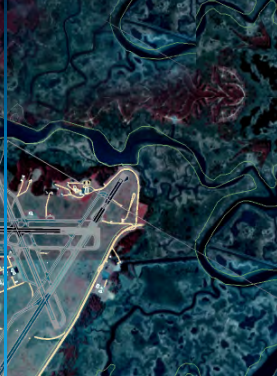




The Mission Planning Lab (MPL)

**NASA Goddard Space Flight Center
Wallops Flight Facility**



Applications

- Systems Engineering
- Earth Modeling
- Realistic Simulation
- Visually Rich Presentation
- Flight Platform Evaluation
- Flight Trajectory Formulation
- Range Asset Placement

Capabilities

- Vehicle Attitude
- Surface Sensor Coverage
- Magnetic Field Lines
- Staging Events
- Payload Deployment
- Atmospheric Layers
- GIS Terrain
- Strip Charts for Trending Analysis
- Post Flight Data Reports
- Three-Dimensional Graphics

Modeled Mission Specifications

- Vehicle Characteristics
- Ground Architecture
- Space Architecture

Tradeoff of Alternatives

- Visibility
- Feasibility
- Variability
- Mathematical Correctness

Sandy Kleckner • Lead • Mission Planning Lab
 Wallops Systems Software Engineering • Code 589
 NASA GSFC • Wallops Flight Facility E109 • Wallops Island VA 23337
 757.824.1929 • Sandra.M.Kleckner@nasa.gov
 For more information, please visit: <http://sites.wff.nasa.gov/mpl/>

visualizing critical concepts in advance