

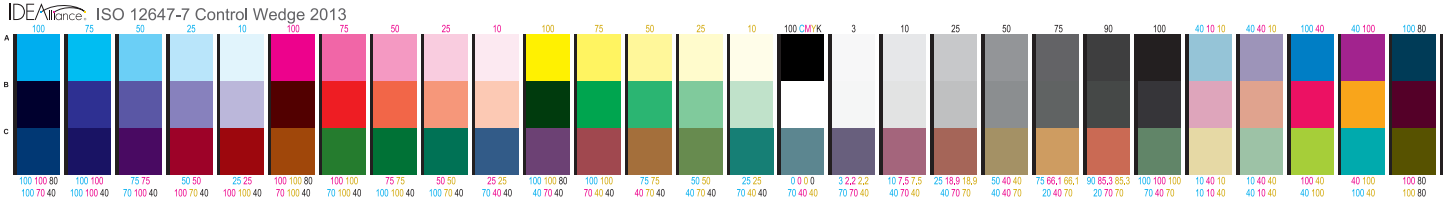
This is the **GPO Resolution Target**, it must be imaged at 100%, along with the IDEAlliance ISO 12647-7 Control Wedge 2013 (i1) on all **High Resolution** proofs. To ensure your proof is acceptable, it must pass the following criteria:

- 1) **Vertical Bar:** Lines must be clear and defined from 2 to 8.
- 2) **CMYK Blocks:** Line pattern must be visible.
- 3) **Targets:** Must be clear and defined from 50 to 400.
- 4) **1 Point Type:** must be legible.
- 5) **All rule patterns:** Must be clear and defined from 1 to 10.
- 6) **GPO Use:** Targets provided by Printing Industries of America.

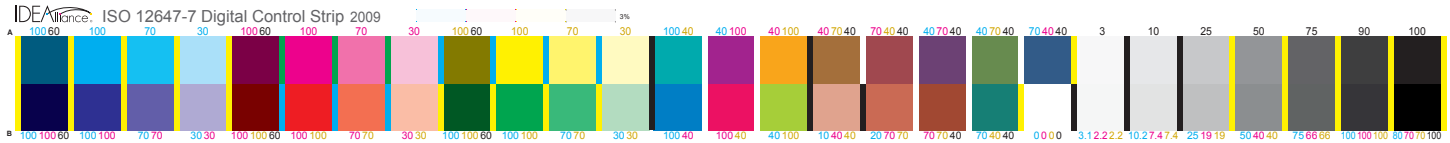
# IDEAlliance Control Bars



The **IDEAlliance ISO 12647-7 Control Wedge 2013 (i1)** is required to be used when **High Resolution (2400 x 1200 dpi)** proofs are indicated on the SF1.



Either the **IDEAlliance ISO 12647-7 Control Wedge 2013 (i1)** or the **Digital Control Strip 2009** is required to be used when **Ink Jet (720 x 720 dpi)** proofs are indicated on the SF1.



Note: Bars are scaled to 80%, must be 100% on proofs

Customers to indicate Inkjet or High Resolution on the SF1:

<b>PRE-PRESS &amp; PROOFS</b>	FURNISHED (Electronic media must include Form 952)				
	<input type="checkbox"/> Files sent via FTP or Email	<input type="checkbox"/> CD/DVD	<input type="checkbox"/> Copy	<input type="checkbox"/> Negative	<input type="checkbox"/> Oth
	PROOFS				
<input type="checkbox"/> Content	<input type="checkbox"/> Inkjet	<input type="checkbox"/> High Resolution			
	(QTY)	(QTY)	(QTY)		
DELIVER PROOFS TO (PO Box not acceptable, include contact phone number):					

For additional information, contact Quality Control at **202.512.0542** or email **qcpp@gpo.gov**