

Automatic Machine Translation Evaluation in Many Languages via Zero-Shot Paraphrasing

Brian Thompson

Johns Hopkins University
brian.thompson@jhu.edu

Matt Post

Johns Hopkins University
post@cs.jhu.edu

Abstract

We frame the task of machine translation evaluation as one of scoring machine translation output with a sequence-to-sequence paraphraser, conditioned on a human reference. We propose training the paraphraser as a multilingual NMT system, treating paraphrasing as a zero-shot translation task (e.g., Czech to Czech). This results in the paraphraser’s output mode being centered around a copy of the input sequence, which represents the best case scenario where the MT system output matches a human reference. Our method is simple and intuitive, and does not require human judgments for training. Our single model (trained in 39 languages) outperforms or statistically ties with all prior metrics on the WMT 2019 segment-level shared metrics task in all languages (excluding Gujarati where the model had no training data). We also explore using our model for the task of quality estimation as a metric—conditioning on the source instead of the reference—and find that it significantly outperforms every submission to the WMT 2019 shared task on quality estimation in every language pair.

1 Introduction

Machine Translation (MT) systems have improved dramatically in the past several years. This is largely due to advances in neural MT (NMT) methods, but the pace of improvement would not have been possible without automatic MT metrics, which provide immediate feedback on MT quality without the time and expense associated with obtaining human judgments of MT output.

However, the improvements that existing automatic metrics helped enable are now causing the correlation between human judgments and automatic metrics to break down (Ma et al., 2019; Mathur et al., 2020) especially for BLEU (Papineni et al., 2002), which has been the de facto standard

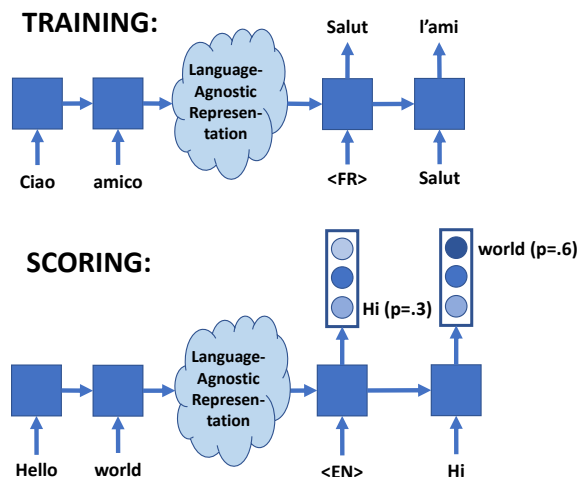


Figure 1: Our model is trained on multilingual parallel examples such as “Ciao amico” translated to French is “Salut l’ami.” At evaluation time, the model is used in zero-shot mode to score MT system outputs conditioned on their corresponding human references. For example, the MT system output “Hi world” conditioned on the human reference “Hello world” is found to have token probabilities [0.3, 0.6].

metric since its introduction almost two decades ago. The problem currently appears limited to very strong systems, but as hardware, modeling, and available training data improve, it is likely BLEU will fail more frequently in the future. This could prove extremely detrimental if the MT community fails to adopt an improved metric, as good ideas could quietly be discarded or rejected from publication because they do not correlate with BLEU. In fact, this may already be happening.

We propose using a sentential, sequence-to-sequence paraphraser to force-decode and score MT outputs conditioned on their corresponding human references. Our model implicitly represents the entire (exponentially large) set of potential paraphrases of a sentence, both valid and invalid; by “querying” the model with a particular system out-

put, we can use the model score to measure how well the system output paraphrases the human reference translation. Our model is not trained on any human quality judgements, which are not available in many domains and/or language pairs.

The best possible MT output is one which perfectly matches a human reference; therefore, for evaluation, an ideal paraphraser would be one with an output distribution centered around a copy of its input sentence. We denote such a model a “lexically/syntactically unbiased paraphraser” to distinguish it from a standard paraphraser trained to produce output which conveys the meaning of the input while also being *lexically and/or syntactically different from it*. For this reason, we propose using a multilingual NMT system as an unbiased paraphraser by treating paraphrasing as zero-shot “translation” (e.g., Czech to Czech). We show that a multilingual NMT model is much closer to an ideal lexically/syntactically unbiased paraphraser than a generative paraphraser trained on synthetic paraphrases. It also allows a single model to work in many languages, and can be applied to the task of “Quality estimation (QE) as a metric” (Fonseca et al., 2019) by conditioning on the source instead of the reference. Figure 1 illustrates our method, which we denote *Prism* (Probability is the metric).

We train a single model in 39 languages and show that it:

- Outperforms or ties with prior metrics and several contrastive neural methods on the segment-level WMT 2019 MT metrics task in every language pair;¹
- Is able to discriminate between very strong neural systems at the system level, addressing a problem raised at WMT 2019; and
- Significantly outperforms all QE metrics submitted to the WMT 2019 QE shared task

Finally, we contrast the effectiveness of our model when scoring MT output using the source vs the human reference. We observe that human references substantially improve performance, and, crucially, allow our model to rank systems that are *substantially better than our model at the task of translation*. This is important because it establishes that our method does not require building a state-of-the-art multilingual NMT model in order to produce a state-of-the-art MT metric capable of evaluating state-of-the-art MT systems.

We release our model, metrics toolkit, and pre-processed training data.²

2 Related Work

MT Metrics Early MT metrics like BLEU (Papineni et al., 2002) and NIST (Doddington, 2002) use token-level n-gram overlap between the MT output and the human reference. Overlap can also be measured at the character level (Popović, 2015, 2017) or using edit distance (Snover et al., 2006). Many metrics use word- and/or sentence-level embeddings, including ReVal (Gupta et al., 2015), RUSE (Shimamura et al., 2018), WMDO (Chow et al., 2019), and ESIM (Mathur et al., 2019). MEANT (Lo and Wu, 2011) and MEANT 2.0 (Lo, 2017) measure similarity between semantic frames and role fillers. State-of-the-art methods including YiSi (Lo, 2019) and BERTscore (Zhang et al., 2019, 2020) rely on contextualized embeddings (Devlin et al., 2019) trained on large (non-parallel) corpora. BLEURT (Sellam et al., 2020) applies fine tuning of BERT, including training on prior human judgements. In contrast, our work exploits parallel bitext and doesn’t require training on human judgements.

Paraphrase Databases Prior work explored using parallel bitext to identify phrase level paraphrases (Bannard and Callison-Burch, 2005; Ganitkevitch et al., 2013) including bitext in multiple language pairs (Ganitkevitch and Callison-Burch, 2014). Paraphrase tables were, in turn, used in MT metrics to reward systems for paraphrasing words (Banerjee and Lavie, 2005) or phrases (Zhou et al., 2006; Denkowski and Lavie, 2010) from the human reference. Our work can be viewed as extending this idea to the sentence level, without having to enumerate the millions or billions of paraphrases (Dreyer and Marcu, 2012) for each sentence.

Multilingual NMT Multilingual NMT (Dong et al., 2015) has been shown to rival performance of single language pair models in high-resource languages (Aharoni et al., 2019; Arivazhagan et al., 2019) while also improving low-resource translation via transfer learning from higher-resource languages (Zoph et al., 2016; Nguyen and Chiang, 2017; Neubig and Hu, 2018). An extreme low-resource setting is where the system translates between languages seen during training, but in a language *pair* where it did not see *any* training

¹Except for Gujarati, where we had no training data.

²<https://github.com/thompsonb/prism>

	Word-level paraphraser log probabilities	H(out in)	sBLEU	LASER
Copy	Jason went to school at the University of Madrid . <EOS> -0.08 -0.26 -0.16 -0.16 -0.12 -0.11 -0.14 -0.10 -0.10 -0.11 -0.10	-0.13	100.0	1.000
Disfluent	Jason went school at University of Madrid . <EOS> -0.08 -0.26 -7.21 -0.12 -4.81 -0.10 -0.11 -0.11 -0.10	-1.43	35.5	0.989
Inadequate	Jason will go to school at the University of Madrid . <EOS> -0.08 -9.77 -0.76 -0.22 -0.19 -0.14 -0.15 -0.16 -0.10 -0.10 -0.12 -0.10	-0.99	70.8	0.960
	Jason went to school at the University of Berlin . <EOS> -0.08 -0.26 -0.16 -0.16 -0.12 -0.11 -0.14 -0.10 -10.34 -0.12 -0.10	-1.06	78.3	0.957
Fluent & Adequate	Jason attended the University of Madrid . <EOS> -0.08 -2.01 -1.63 -0.42 -0.10 -0.09 -0.16 -0.10	-0.57	41.1	0.918

Table 1: Example token-level log probabilities from our model for various output sentences, conditioned on input sentence (i.e., human reference) “*Jason went to school at the University of Madrid.*” H(out|in) denotes the average token-level log probability. We observe that our model generally penalizes any deviations (**bolded**) from the input sentence, but tends to penalize deviations which change the meaning of the sentence or introduce a disfluency more harshly than those which are fluent and adequate. Sentence-level BLEU with smoothing=1 (“sBLEU”) and LASER embedding cosine similarity (“LASER”) are shown for comparison. We note that LASER appears fairly insensitive to disfluencies, and sentenceBLEU struggles to reward valid paraphrases.

data, denoted ‘zero-shot’ translation. Despite evidence that intermediate representations are not truly language-agnostic (Kudugunta et al., 2019), zero-shot translation has been shown successful, especially between related languages (Johnson et al., 2017; Gu et al., 2018; Pham et al., 2019).

Generative Paraphrasing Sentential paraphrasing can be accomplished by training an MT system on paraphrase examples instead of translation pairs (Quirk et al., 2004). While natural paraphrase datasets do exist (Quirk et al., 2004; Coster and Kauchak, 2011; Fader et al., 2013; Lin et al., 2014; Federmann et al., 2019), they are somewhat limited. An alternative is to start with much more plentiful bitext and back-translate one side into the language of the other to create synthetic paraphrases on which to train (Prakash et al., 2016; Wieting and Gimpel, 2018; Hu et al., 2019a,b,c). Tiedemann and Scherrer (2019) propose using paraphrasing as a way to measure the semantic abstraction of multilingual NMT. They also propose using a multilingual NMT model as a generative paraphraser.³

Semantic Similarity Parallel corpora in many language pairs have been used to produce fixed-size, multilingual sentence representations (Schwenk and Douze, 2017; Wieting et al., 2017; Artetxe and Schwenk, 2018; Wieting et al., 2019; Raganato et al., 2019). LASER (Artetxe and

³We find that generating from a well trained multilingual NMT system tends to produce copies of the input, as opposed to interesting paraphrases (see Appendix A).

Schwenk, 2018), for example, trains a variant of NMT with a fixed-size intermediate representation in 93 languages. Embeddings produced by the encoder can be compared to measure intra- or inter-lingual semantic similarity.

3 Method

We propose using a paraphraser to force-decode and estimate probabilities of MT system outputs, conditioned on their corresponding human references. Let $p(y_t|y_{i<t}, x)$ be the probability our paraphraser assigns to the t^{th} token in output sequence y , given the previous output tokens $y_{i<t}$ and the input sequence x . Table 1 shows an example of how token-level probabilities from our model (described in §4) penalize both fluency and adequacy errors given a human reference. We consider two ways of combining token-level probabilities from the model—sequence-level log probability (G) and average token-level log probability (H):

$$G(y|x) = \sum_{t=1}^{|y|} \log p(y_t|y_{i<t}, x)$$

$$H(y|x) = \frac{1}{|y|} G(y|x)$$

Let sys denote an MT system output, ref denote a human reference, and src denote the source. We expect scoring sys conditioned on ref to be most indicative of the quality of sys . However, we also explore scoring ref conditioned on sys as we find qualitatively that output sentences which drop some

meaning conveyed by the input sentence are penalized less harshly by the model than output sentences which contain extra information not present in the input. Scoring in both directions to penalize the presence of information in one sentence but not the other is similar, in spirit, to methods which use bi-directional textual entailment as an MT metric (Padó et al., 2009; Khobragade et al., 2019).⁴

We postulate that the output sentence that best represents the meaning of an input sentence is, in fact, simply a copy of the input sentence, as precise word order and choice often convey subtle connotations. As such, we seek a model whose output distribution is *centered around a copy of the input sentence*, which we denote a “lexically/syntactically unbiased paraphraser.” While a standard generative paraphraser is trained to retain semantic meaning, it does not meet our criteria because it is *simultaneously* trained to produce output which is lexically/syntactically different than its input, a key element in generative paraphrasing (Bhagat and Hovy, 2013).

We propose using a multilingual NMT system as a lexically/syntactically unbiased paraphraser. A multilingual NMT system consists of an encoder which maps a sentence in to an (ideally) language-agnostic semantic representation, and decoder to map that representation back to a sentence. The model has only seen bitext in training, but we propose to treat paraphrasing as a zero-shot “translation” (e.g., Czech to Czech).

Because our model is multilingual, we can also score MT system output conditioned on the source sentence instead of the human reference. This task is known as “quality estimation (QE) as a metric,” and was part of the WMT19 QE shared task (Fonseca et al., 2019). We use “Prism-ref” to denote our reference-based metric and “Prism-src” to denote our system applied as a QE metric.

Our final metric and QE metric are defined based on results on our development set (see §5.2) as follows:

$$\begin{aligned} \text{Prism-ref} &= \frac{1}{2}H(\text{sys}|\text{ref}) + \frac{1}{2}H(\text{ref}|\text{sys}) \\ \text{Prism-src} &= H(\text{sys}|\text{src}) \end{aligned}$$

To obtain system-level scores, we average segment-level scores over all segments in the test set.

⁴Conditional probabilities of MT systems in each direction have been shown effective at filtering MT training data (Junczys-Dowmunt, 2018).

4 Experiments

We train a multilingual NMT model and explore the extent to which it functions as a lexically/syntactically unbiased paraphraser. We then conduct several preliminary experiments on the WMT18 MT metrics data (Ma et al., 2018) to determine how to best utilize the token-level probabilities from the paraphraser, and report results on the WMT19 system- and segment-level metric tasks (Ma et al., 2019) and QE as a metric task (Fonseca et al., 2019).

4.1 Data Preparation

Our method requires a model, which in turn relies heavily on the data on which it is trained, so we describe here the rationale behind the design decisions made regarding the training data. Full details sufficient for replication are provided in Appendix B.

Language-Agnostic Representations To encourage our intermediate representation to be as language-agnostic as possible, we choose datasets with as much language pair diversity as possible (i.e., not just en-* and *-en), as Kudugunta et al. (2019) has shown that encoder representation is affected by both the source language and target language. While it is common to append the target language token to the source sentence, we instead prepend it to the target sentence so that the encoder cannot do anything target-language specific with this tag. At test time, we force-decode the desired language tag prior to scoring.

Noise NMT systems are known to be sensitive to noise, including sentence alignment errors (Khayrallah and Koehn, 2018), so we perform filtering with LASER (Schwenk, 2018; Chaudhary et al., 2019). We also perform language ID filtering using FastText (Joulin et al., 2016) to avoid training the decoder with incorrect language tags.

Number of Languages Aharoni et al. (2019) found that performance of zero-shot translation in a related language pair increased substantially when increasing the number of languages from 5 languages and 25, with a performance plateau somewhere between 25 and 50 languages. We view paraphrasing as zero-shot translation between sentences in the same language, so we expect to need a similar number of languages.

Copies We filter sentence pairs with excessive copies and partial copies, as multiple studies (Ott et al., 2018; Khayrallah and Koehn, 2018) have noted that MT performance degrades substantially when systems are exposed to copies in training.

4.2 Model Training

We train a Transformer (Vaswani et al., 2017) model with approximately 745M parameters to translate between 39 languages. The full list of languages and data amounts used is provided in Appendix B, and model training details sufficient for replication are given in Appendix C. Training a single large model consumed the majority of our compute budget, thus performing ablations is beyond the scope of this work.

Our data comes primarily from WikiMatrix (Schwenk et al., 2019), Global Voices,⁵ EuroParl (Koehn, 2005), SETimes,⁶ and United Nations (Eisele and Chen, 2010). The data processing described above and in Appendix B results in 99.8M sentence pairs in 39 languages.⁷ The most common language is English, at 16.7% of our data, while the least common 20 languages account for 21.9%.

4.3 Baselines and Contrastive Methods

We compare to all systems from the WMT19 shared metrics task, as well as BERTscore (Zhang et al., 2020) and the recent BLEURT method (Selam et al., 2020). We also explore several contrastive methods. Training details sufficient for replication for each model/baseline are given in Appendix C.

Generative Sentential Paraphraser We compare scoring with our Prism model vs a standard, English-only paraphraser trained on the ParaBank 2 dataset (Hu et al., 2019c). ParaBank 2 contains ~ 50M synthetic paraphrastic pairs derived from back-translating a Czech–English corpus, and the authors report state-of-the-art paraphrasing results.

Auto-encoder Auto-encoders provide an alternative means of training seq2seq models, without the need for parallel bitext. We compare to scoring with the “multilingual denoising pre-trained model” (mBART) of Liu et al. (2020), as it works in all languages of interest.

⁵<http://casmacat.eu/corpus/global-voices.html>

⁶<http://nlp.ffzg.hr/resources/corpora/setimes/>

⁷For every sentence pair (a,b) in our 99.8M examples, we train on both (a,b) and (b,a)

LASER We explore using the cosine distance between LASER embeddings of the MT output and human reference, using the pretrained 93-language model provided by the authors.⁸ We are particularly interested in LASER as it, like our model, is trained on parallel bitext in many languages.

Language Model We find qualitatively that LASER is fairly insensitive to disfluencies (see Table 1), so we also explore augmenting it with language model (LM) scores of the system outputs. We train a multilingual language model (see Appendix C) on the same data as our multilingual NMT system.

4.4 Paraphraser Bias

We expect that a lexically/syntactically unbiased measure of translation quality should (on average) increase with increased lexical similarity between a translation and reference. To explore the extent to which Prism and the model trained on ParaBank 2 are biased, we consider average $H(\text{sys}|\text{ref})$ as a function of binned lexical similarity (approximated by sentBLEU, with smoothing=1) for all (sys, ref) pairs for all systems submitted to WMT19 in all language pairs into English. We also contrast the conditional probabilities of three outputs for the same input: (1) the sequence generated by the model via beam search; (2) a copy of the input; and (3) a human paraphrase of the input. Finally, we generate from the model using beam search and examine the outputs to see how much they differ from the inputs.

4.5 MT Metrics Evaluation

We report results and statistical significance using scripts released with the WMT19 shared task. Segment-level performance is reported as the Kendall’s τ variant used in the shared task, and system-level performance is reported as Pearson correlation with the mean of the human judgments. Bootstrap resampling (Koehn, 2004; Graham et al., 2014) is used to estimate confidence intervals for each metric, and metrics with non-overlapping 95% confidence intervals are identified as having a statistically significant difference in performance.

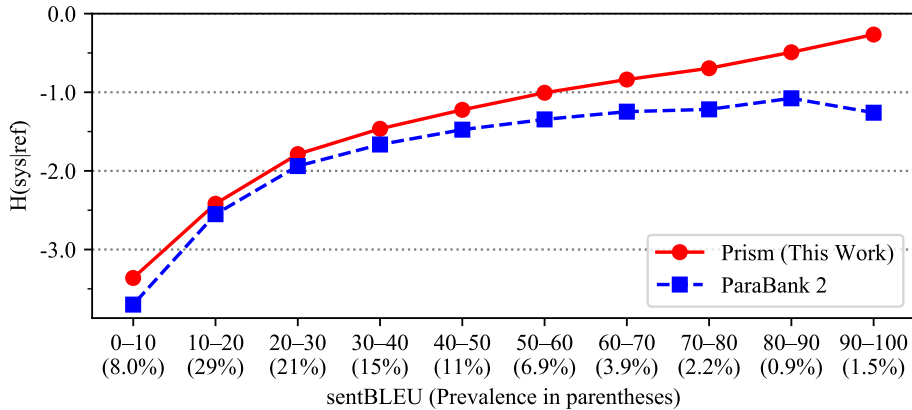


Figure 2: Average $H(\text{sys}|\text{ref})$ as a function of average lexical difference (as measured by sentBLEU) for every English (sys , ref) pair submitted to WMT19, for both the Prism and ParaBank 2 paraphrasers. (sys , ref) pairs are split into 10 sentBLEU bins of uniform width. Fraction of total data in each bin is shown on x-axis (in parentheses).

	en-cs	en-de	en-fi	en-gu	en-kk	en-lt	en-ru	en-zh	de-cs	de-fr	fr-de
BERTSCORE (Zhang et al., 2020)	0.485	0.345	0.524	0.558	0.533	0.463	0.580	0.347	0.352	0.325	0.274
EED [‡] (Stanchev et al., 2019)	0.431	0.315	0.508	0.568	0.518	0.425	0.546	0.257	0.345	0.301	0.267
YISI-1 [‡] (Lo, 2019)	0.475	0.351	0.537	0.551	0.546	0.470	0.585	0.355	0.376	0.349	0.310
YISI-1_SRL [‡] (Lo, 2019)	–	0.368	–	–	–	–	–	0.361	–	–	0.299
Prism-ref (This Work)	0.582	0.427	0.591	0.313	0.531	0.558	0.584	0.376	0.458	0.453	0.426
LASER + LM (Contrastive)	0.535	0.401	0.568	0.306	0.408	0.503	0.640	0.356	0.431	0.401	0.381
mBART (Contrastive)	0.345	0.302	0.401	0.528	0.462	0.365	0.443	0.280	0.262	0.255	0.236

	de-en	fi-en	gu-en	kk-en	lt-en	ru-en	zh-en
BERTSCORE (Zhang et al., 2020)	0.176	0.345	0.320	0.432	0.381	0.223	0.430
BLEURT (Sellam et al., 2020)	0.204	0.367	0.311	0.447	0.387	0.228	0.423
ESIM [‡] (Chen et al., 2017; Mathur et al., 2019)	0.167	0.337	0.303	0.435	0.359	0.201	0.396
YISI-1 [‡] (Lo, 2019)	0.164	0.347	0.312	0.440	0.376	0.217	0.426
YISI-1_SRL [‡] (Lo, 2019)	0.199	0.346	0.306	0.442	0.380	0.222	0.431
Prism-ref (This Work)	0.204	0.357	0.313	0.434	0.382	0.225	0.438
Prism-ref w/ ParaBank 2 (Contrastive)	0.184	0.341	0.326	0.425	0.373	0.207	0.432
LASER + LM (Contrastive)	0.190	0.335	0.319	0.428	0.368	0.207	0.416
mBART (Contrastive)	0.136	0.255	0.246	0.377	0.298	0.162	0.349

Table 2: WMT19 segment-level human correlation (τ), to non-English (top) and to English (bottom). **Bold** denotes top scoring method and any other methods with whose 95% confidence interval overlaps with that of a top method. [‡]:WMT19 Metric Submission. For brevity, only competitive baselines are shown. For complete results see Appendix E. Our models were not trained on Gujarati (gu). “LASER + LM” denotes the optimal linear combination found on the development set.

5 Results

5.1 Paraphraser Bias Results

We find $H(\text{sys}|\text{ref})$ increases monotonically with sentBLEU for the Prism model, but the model trained on ParaBank 2 has nearly the same scores for output with sentBLEU in the range of 60 to 100; however that range accounts for only about 8.5% of all system outputs (see Figure 2). We find that a copy of the input is almost as probable as beam search output for the Prism model. In contrast, the

model trained on ParaBank 2 prefers its own beam search output to a copy of the input. Additionally, beam search from our model produces output which is more lexically similar to the input (BLEU of 82.8 with respect to input, vs 31.9 for ParaBank 2). ParaBank 2 tends to change the output in ways which occasionally significantly alter the meaning of the sentence. See Appendix A for more details. All of these findings support our hypothesis that our model is closer to an ideal lexically/syntactically unbiased paraphraser than the contrastive model trained on synthetic paraphrases.

⁸<https://github.com/facebookresearch/LASER>

5.2 Preliminary (Development) Results

We find that length-normalized log probability (H) slightly outperforms un-normalized log probability (G). When using the reference, we find an equal weighting of $H(\text{sys}|\text{ref})$ and $H(\text{ref}|\text{sys})$ to be approximately optimal, but we find that when using the source, $H(\text{src}|\text{sys})$ does not appear to add useful information to $H(\text{sys}|\text{src})$. Full results can be found in [Appendix D](#). These findings were used to select the Prism-ref and Prism-src definitions (§3).

We find that the probability of sys as estimated by an LM, as well as and the cosine distance between LASER embeddings of sys and ref, both have decent correlation with human judgments and are complementary. However, cosine distance between LASER embeddings of sys and src have only weak correlation.

5.3 Segment-Level Metric Results

Segment-level metric results are shown in [Table 2](#). On language pairs into non-English, we outperform prior work by a statistically significant margin in 7 of 11 language pairs⁹ and are statistically tied for best in the rest, with the exception of Gujarati (gu) where the model had no training data. Into English, our metric is statistically tied with the best prior work in every language pair. Our metric tends to significantly outperform our contrastive LASER + LM and mBART methods, although LASER + LM performs surprisingly well in en–ru.

5.4 System-Level Metric Results

[Table 3](#) shows system-level metric performance on the top four systems submitted to WMT19 compared to selected metrics. While correlations are not high in all cases for Prism, they are at least all positive. In contrast, BLEU has negative correlation in 5 language pairs, and BERTscore and YiSi-1 variants are each negative in at least two. BLEURT has positive correlations in all language pairs into English, but is English-only. Note that Pearson’s correlation coefficient may be unstable in this setting ([Mathur et al., 2020](#)). For full top four system-level results see [Appendix F](#).

We do not find the system-level results computed against *all* submitted MT systems (see [Appendix G](#)) to be particularly interesting; as noted by [Ma et al. \(2019\)](#), a single weak system can result in high

⁹In en–ru, Prism-ref is statistically tied with YiSi-1, ESIM, and BERTscore.

overall system-level correlation even for a very poor metric.

5.5 QE as a Metric Results

We find that our reference-less Prism-src outperforms all QE as a metrics systems from the WMT19 shared task by a statistically significant margin, in every language pair at segment-level human correlation ([Table 4](#)), and outperforms or statistically ties at system-level human correlation ([Appendix G](#)).

6 Analysis and Discussion

How helpful are human references? The fact that our model is multilingual allows us to explore the extent to which the human reference actually improves our model’s ability to judge MT system output, compared to using the source instead. The underlying assumption with any MT metric is that the work done by the human translator makes it easier to automatically judge the quality of MT output. However, if our model or the MT systems being judged were strong enough, we would expect this assumption to break down.

Comparing the performance of our method with access to the human reference (Prism-ref) vs our method with access to only the source (Prism-src), we find that the reference-based method statistically outperforms the source-based method in all but one language pair. We find the case where they are not statistically different, de–cs, to be particularly interesting: de–cs was the only language pair in WMT19 where the systems were unsupervised (i.e., did not use parallel training data). As a result, it is the only language pair where our model outperformed the best WMT system at translation. In most cases, our model is *substantially worse at translation* than the best WMT systems. For example, in en–de and zh–en, two language pairs where strong NMT systems were especially problematic for MT metrics, the Prism model is 6.8 and 19.2 BLEU points behind the strongest WMT systems, respectively (see [Table 5](#) for the Prism model compared to the best system submitted in each WMT19 language pair). Thus the performance difference between Prism-ref and Prism-src would suggest that the model needs no help in judging MT systems which are weaker than it is, but *the human references are assisting our model in evaluating MT systems which are stronger than it is*. This means that we have not simply reduced the task of MT evaluation to that of building a state-of-the-art MT

	en-cs	en-de	en-fi	en-gu	en-kk	en-lt	en-ru	en-zh	de-cs	de-fr	fr-de
BERTSCORE (Zhang et al., 2020)	0.868	<i>-0.722</i>	0.859	0.922	0.288	0.955	0.953	0.982	0.976	0.707	0.973
BLEU [†] (Papineni et al., 2002)	0.930	<i>-0.370</i>	0.898	0.860	0.181	0.925	0.753	0.987	0.812	0.495	0.983
YISI-1 [‡] (Lo, 2019)	0.847	<i>-0.220</i>	0.976	0.917	0.342	0.838	0.963	0.990	0.967	0.677	0.967
YISI-1_SRL [‡] (Lo, 2019)	—	<i>-0.378</i>	—	—	—	—	—	0.994	—	—	0.974
Prism-ref (This Work)	0.952	0.278	0.886	0.863	0.693	0.862	0.975	0.966	0.968	0.648	0.998
LASER + LM (Contrastive)	0.961	0.377	0.903	0.509	0.605	0.743	0.962	0.985	0.947	0.774	0.975
mBART (Contrastive)	0.936	<i>-0.834</i>	0.966	0.912	0.224	0.946	0.968	0.986	0.964	0.944	0.874

	de-en	fi-en	gu-en	kk-en	lt-en	ru-en	zh-en
BERTSCORE (Zhang et al., 2020)	0.272	0.683	0.913	0.897	0.753	0.456	<i>-0.220</i>
BLEU [†] (Papineni et al., 2002)	<i>-0.822</i>	<i>-0.275</i>	0.966	0.958	0.625	<i>-0.356</i>	<i>-0.694</i>
BLEURT (Sellam et al., 2020)	0.953	0.714	0.881	0.929	0.841	0.522	0.660
YISI-1 [‡] (Lo, 2019)	0.045	0.610	0.962	0.887	0.552	0.365	<i>-0.067</i>
YISI-1_SRL [‡] (Lo, 2019)	0.081	0.580	0.959	0.874	0.560	0.342	<i>-0.069</i>
Prism-ref (This Work)	0.401	0.719	0.896	0.796	0.877	0.431	0.523
LASER + LM (Contrastive)	0.957	0.768	0.867	0.870	0.615	0.596	0.733
mBART (Contrastive)	<i>-0.739</i>	0.559	0.913	0.902	0.491	<i>-0.103</i>	<i>-0.295</i>

Table 3: WMT19 system-level human correlation (Pearson), for top 4 systems only, to non-English (top) and to English (bottom), for selected metrics. Negative correlations with human judgments shown in *red* for emphasis. †:WMT19 Baseline ‡:WMT19 Metric Submission. “LASER + LM” denotes the optimal linear combination found on the development set. Our models were not trained on Gujarati (gu).

	en-cs	en-de	en-fi	en-gu	en-kk	en-lt	en-ru	en-zh	de-cs	de-fr	fr-de
Best WMT19 QE as Metric	0.069 ^a	0.236 ^b	0.351 ^c	0.147 ^a	0.187 ^a	0.003 ^a	0.226 ^c	0.044 ^a	0.199 ^a	0.186 ^a	0.066 ^a
Prism-src (This work)	0.470	0.402	0.555	0.215	0.507	0.499	0.486	0.287	0.444	0.371	0.316

	de-en	fi-en	gu-en	kk-en	lt-en	ru-en	zh-en
Best WMT19 QE as Metric	0.068 ^{a,b}	0.211 ^d	-0.001 ^a	0.096 ^a	0.075 ^a	0.089 ^d	0.253 ^a
Prism-src (This work)	0.109	0.300	0.102	0.391	0.356	0.178	0.336

Table 4: WMT19 segment-level human correlation (τ) for QE as Metric systems (which have access to the source only, not the reference). **Bold** denotes top scoring method and any other methods with whose 95% confidence interval overlaps with that of a top method. Our models were not trained on Gujarati (gu). For brevity, only the best QE-metric for each language pair is shown—for full results see Appendix G. a:YISI-2 (Lo, 2019) b:YISI-2_SRL (Lo, 2019) c:UNI (Yankovskaya et al., 2019) d:UNI+ (Yankovskaya et al., 2019).

system. We see that a good (but not state-of-the-art) multilingual NMT system can be a state-of-the-art MT metric and judge state-of-the-art MT systems.

Finally, with the exception of de-cs discussed above, we see statistically significant improvements for Prism-ref over Prism-src both into English (where human judgments were reference-based) and into non-English (where human judgments were source-based). This suggests that the high correlation of Prism-ref with human judgments is not simply the result of reference bias (Fomicheva and Specia, 2016).

Does paraphraser bias matter? Our lexically/syntactically unbiased paraphraser tends to outperform the generative English-only ParaBank 2 paraphraser, but usually not by a statistically significant margin. Analysis indicate the lexi-

cal/syntactic bias is only harmful in somewhat infrequent cases where MT systems match or nearly match the reference, suggesting it would be more detrimental with stronger systems or multiple references. Our multilingual training method is much simpler than the alternative of creating synthetic paraphrases and training individual models in 39 languages, and our model may benefit from transfer learning to lower-resource languages.

Does fluency matter? Despite NMT being very fluent, our results suggest that fluency is fairly discriminative, especially in non-English: LM scoring outperforms sentenceBLEU at segment-level correlation in 7/10 language pairs to non-English languages (excluding Gujarati), for example. This is consistent with recent findings that LM scores can be used to augment BLEU (Edunov et al., 2020).

Lang Pair	BLEU		
	WMT19 Best	Multilingual	Δ
de-cs	20.1 [†]	21.8	+1.7
de-en	42.8	35.5	-7.3
de-fr	37.3	33.9	-3.4
en-cs	29.9	24.2	-5.7
en-de	44.9	38.1	-6.8
en-fi	27.4	21.9	-5.5
en-gu	28.2	0.0 [‡]	-28.2
en-kk	11.1	8.6	-2.5
en-lt	20.1	15.0	-5.1
en-ru	36.3	28.1	-8.2
en-zh	44.6	30.1	-14.5
fi-en	33.0	26.2	-6.8
fr-de	35.0	26.4	-8.6
gu-en	24.9	0.4 [‡]	-24.5
kk-en	30.5	27.7	-2.8
lt-en	36.3	28.5	-7.8
ru-en	40.1	36.1	-4.0
zh-en	39.9	20.6	-19.3

Table 5: BLEU scores for our multilingual NMT system on WMT19 testsets, compared to best system from WMT19. Our multilingual system achieves state-of-the-art performance as an MT metric despite substantially under performing all the best WMT19 MT systems at translation (excluding unsupervised). [†]: WMT systems were unsupervised (no parallel data). [‡]: Multilingual system did not train on Gujarati (gu). Systems are not trained on the same data, so this should not be interpreted as a comparison between multilingual and single-language pair MT. ISO 639-1 language codes.

Can we measure adequacy and fluency separately? The proposed method significantly outperforms the contrastive LASER-based method in most language pairs, even when LASER is augmented with a language model. This suggests that jointly optimizing a model for adequacy and fluency is better than optimizing them independently and combining after the fact—this is unsurprising given that neural MT has shown significant improvements over statistical MT, where a phrase table and language model were trained separately.

Can we train on monolingual data instead of bitext? The proposed method significantly outperforms scoring with the mBART auto-encoder, which is trained on large amounts of monolingual data, despite using substantially less compute power (1.3 weeks on 8 V100s for Prism vs 2.5 weeks on 256 V100s for mBART).

7 Conclusion and Future Work

We show that a multilingual NMT system can be used as a lexically/syntactically unbiased, multilingual paraphraser, and that the resulting paraphraser can be used as an MT metric and QE metric. Our method achieves state-of-the-art performance on the most recent WMT shared metrics and QE tasks, without training on prior human judgements.

We release a single model which supports 39 languages. To the best of our knowledge, we are the first to release a large multilingual NMT system, and we hope others follow suit. We are optimistic our method will improve further as stronger multilingual NMT models become publicly available.

We compare our method to several contrastive methods and present analysis showing that we have not simply reduced the task of evaluation to that of building a state-of-the-art MT system; the work done by the human translator to create references helps the evaluation model to judge systems that are stronger (at translation) than it is.

Nothing in our method is specific to sentence-level MT. In future work, we would like to extend Prism to paragraph- or document-level evaluation by training a paragraph- or document-level multilingual NMT system, as there is growing evidence that MT evaluation would be better conducted at the document level, rather than the sentence level (Läubli et al., 2018).

Acknowledgments

Brian Thompson is supported by the National Defense Science and Engineering Graduate (NDSEG) Fellowship.

References

- Roei Aharoni, Melvin Johnson, and Orhan Firat. 2019. [Massively multilingual neural machine translation](#). In *Proceedings of the 2019 Conference of the North American Chapter of the Association for Computational Linguistics: Human Language Technologies, Volume 1 (Long and Short Papers)*, pages 3874–3884, Minneapolis, Minnesota. Association for Computational Linguistics.
- Naveen Arivazhagan, Ankur Bapna, Orhan Firat, Dmitry Lepikhin, Melvin Johnson, Maxim Krikun, Mia Xu Chen, Yuan Cao, George Foster, Colin Cherry, Wolfgang Macherey, Zhifeng Chen, and Yonghui Wu. 2019. Massively multilingual neural machine translation in the wild: Findings and challenges. *arXiv preprint arXiv:1907.05019*.

- Mikel Artetxe and Holger Schwenk. 2018. Massively multilingual sentence embeddings for zero-shot cross-lingual transfer and beyond. *arXiv preprint arXiv:1812.10464*.
- Satanjeev Banerjee and Alon Lavie. 2005. **METEOR: An automatic metric for MT evaluation with improved correlation with human judgments**. In *Proceedings of the ACL Workshop on Intrinsic and Extrinsic Evaluation Measures for Machine Translation and/or Summarization*, pages 65–72, Ann Arbor, Michigan. Association for Computational Linguistics.
- Colin Bannard and Chris Callison-Burch. 2005. **Paraphrasing with bilingual parallel corpora**. In *Proceedings of the 43rd Annual Meeting of the Association for Computational Linguistics (ACL'05)*, pages 597–604, Ann Arbor, Michigan. Association for Computational Linguistics.
- Rahul Bhagat and Eduard Hovy. 2013. **Squibs: What is a paraphrase?** *Computational Linguistics*, 39(3):463–472.
- Ondřej Bojar, Rajen Chatterjee, Christian Federmann, Yvette Graham, Barry Haddow, Shujian Huang, Matthias Huck, Philipp Koehn, Qun Liu, Varvara Logacheva, Christof Monz, Matteo Negri, Matt Post, Raphael Rubino, Lucia Specia, and Marco Turchi. 2017. **Findings of the 2017 conference on machine translation (WMT17)**. In *Proceedings of the Second Conference on Machine Translation*, pages 169–214, Copenhagen, Denmark. Association for Computational Linguistics.
- Vishrav Chaudhary, Yuqing Tang, Francisco Guzmán, Holger Schwenk, and Philipp Koehn. 2019. **Low-resource corpus filtering using multilingual sentence embeddings**. In *Proceedings of the Fourth Conference on Machine Translation (Volume 3: Shared Task Papers, Day 2)*, pages 261–266, Florence, Italy. Association for Computational Linguistics.
- Qian Chen, Xiaodan Zhu, Zhen-Hua Ling, Si Wei, Hui Jiang, and Diana Inkpen. 2017. **Enhanced LSTM for natural language inference**. In *Proceedings of the 55th Annual Meeting of the Association for Computational Linguistics (Volume 1: Long Papers)*, pages 1657–1668, Vancouver, Canada. Association for Computational Linguistics.
- Julian Chow, Lucia Specia, and Pranava Madhyastha. 2019. **WMDO: Fluency-based word mover’s distance for machine translation evaluation**. In *Proceedings of the Fourth Conference on Machine Translation (Volume 2: Shared Task Papers, Day 1)*, pages 494–500, Florence, Italy. Association for Computational Linguistics.
- William Coster and David Kauchak. 2011. **Simple English Wikipedia: A new text simplification task**. In *Proceedings of the 49th Annual Meeting of the Association for Computational Linguistics: Human Language Technologies*, pages 665–669, Portland, Oregon, USA. Association for Computational Linguistics.
- Michael Denkowski and Alon Lavie. 2010. **Extending the METEOR machine translation evaluation metric to the phrase level**. In *Human Language Technologies: The 2010 Annual Conference of the North American Chapter of the Association for Computational Linguistics*, pages 250–253, Los Angeles, California. Association for Computational Linguistics.
- Jacob Devlin, Ming-Wei Chang, Kenton Lee, and Kristina Toutanova. 2019. **BERT: Pre-training of deep bidirectional transformers for language understanding**. In *Proceedings of the 2019 Conference of the North American Chapter of the Association for Computational Linguistics: Human Language Technologies, Volume 1 (Long and Short Papers)*, pages 4171–4186, Minneapolis, Minnesota. Association for Computational Linguistics.
- George Doddington. 2002. Automatic evaluation of machine translation quality using n-gram co-occurrence statistics. In *Proceedings of the second international conference on Human Language Technology Research*, pages 138–145.
- Daxiang Dong, Hua Wu, Wei He, Dianhai Yu, and Haifeng Wang. 2015. **Multi-task learning for multiple language translation**. In *Proceedings of the 53rd Annual Meeting of the Association for Computational Linguistics and the 7th International Joint Conference on Natural Language Processing (Volume 1: Long Papers)*, pages 1723–1732, Beijing, China. Association for Computational Linguistics.
- Markus Dreyer and Daniel Marcu. 2012. **HyTER: Meaning-equivalent semantics for translation evaluation**. In *Proceedings of the 2012 Conference of the North American Chapter of the Association for Computational Linguistics: Human Language Technologies*, pages 162–171, Montréal, Canada. Association for Computational Linguistics.
- Melania Duma and Wolfgang Menzel. 2017. **UHH submission to the WMT17 metrics shared task**. In *Proceedings of the Second Conference on Machine Translation*, pages 582–588, Copenhagen, Denmark. Association for Computational Linguistics.
- Sergey Edunov, Myle Ott, Marc’Aurelio Ranzato, and Michael Auli. 2020. **On the evaluation of machine translation systems trained with back-translation**. In *Proceedings of the 58th Annual Meeting of the Association for Computational Linguistics*, pages 2836–2846, Online. Association for Computational Linguistics.
- Andreas Eisele and Yu Chen. 2010. **Multiun: A multilingual corpus from united nation documents**. In *LREC*.
- Anthony Fader, Luke Zettlemoyer, and Oren Etzioni. 2013. **Paraphrase-driven learning for open question**

- answering. In *Proceedings of the 51st Annual Meeting of the Association for Computational Linguistics (Volume 1: Long Papers)*, pages 1608–1618, Sofia, Bulgaria. Association for Computational Linguistics.
- Christian Federmann, Oussama Elachqar, and Chris Quirk. 2019. **Multilingual whispers: Generating paraphrases with translation.** In *Proceedings of the 5th Workshop on Noisy User-generated Text (W-NUT 2019)*, pages 17–26, Hong Kong, China. Association for Computational Linguistics.
- Marina Fomicheva and Lucia Specia. 2016. **Reference bias in monolingual machine translation evaluation.** In *Proceedings of the 54th Annual Meeting of the Association for Computational Linguistics (Volume 2: Short Papers)*, pages 77–82, Berlin, Germany. Association for Computational Linguistics.
- Erick Fonseca, Lisa Yankovskaya, André F. T. Martins, Mark Fishel, and Christian Federmann. 2019. **Findings of the WMT 2019 shared tasks on quality estimation.** In *Proceedings of the Fourth Conference on Machine Translation (Volume 3: Shared Task Papers, Day 2)*, pages 1–10, Florence, Italy. Association for Computational Linguistics.
- Juri Ganitkevitch and Chris Callison-Burch. 2014. **The multilingual paraphrase database.** In *Proceedings of the Ninth International Conference on Language Resources and Evaluation (LREC-2014)*, pages 4276–4283, Reykjavik, Iceland. European Languages Resources Association (ELRA).
- Juri Ganitkevitch, Benjamin Van Durme, and Chris Callison-Burch. 2013. **PPDB: The paraphrase database.** In *Proceedings of the 2013 Conference of the North American Chapter of the Association for Computational Linguistics: Human Language Technologies*, pages 758–764, Atlanta, Georgia. Association for Computational Linguistics.
- Yvette Graham, Nitika Mathur, and Timothy Baldwin. 2014. **Randomized significance tests in machine translation.** In *Proceedings of the Ninth Workshop on Statistical Machine Translation*, pages 266–274, Baltimore, Maryland, USA. Association for Computational Linguistics.
- Jiatao Gu, Hany Hassan, Jacob Devlin, and Victor O.K. Li. 2018. **Universal neural machine translation for extremely low resource languages.** In *Proceedings of the 2018 Conference of the North American Chapter of the Association for Computational Linguistics: Human Language Technologies, Volume 1 (Long Papers)*, pages 344–354, New Orleans, Louisiana. Association for Computational Linguistics.
- Yinuo Guo and Junfeng Hu. 2019. **Meteor++ 2.0: Adopt syntactic level paraphrase knowledge into machine translation evaluation.** In *Proceedings of the Fourth Conference on Machine Translation (Volume 2: Shared Task Papers, Day 1)*, pages 501–506, Florence, Italy. Association for Computational Linguistics.
- Rohit Gupta, Constantin Orăsan, and Josef van Genabith. 2015. **ReVal: A simple and effective machine translation evaluation metric based on recurrent neural networks.** In *Proceedings of the 2015 Conference on Empirical Methods in Natural Language Processing*, pages 1066–1072, Lisbon, Portugal. Association for Computational Linguistics.
- Aaron L.-F Han, Derek Wong, Lidia Chao, Liangye He, Yi Lu, Junwen Xing, and Xiaodong Zeng. 2013. **Mt summit13.language-independent model for machine translation evaluation with reinforced factors.**
- Aaron L. F. Han, Derek F. Wong, and Lidia S. Chao. 2012. **LEPOR: A robust evaluation metric for machine translation with augmented factors.** In *Proceedings of COLING 2012: Posters*, pages 441–450, Mumbai, India. The COLING 2012 Organizing Committee.
- Hany Hassan, Anthony Aue, Chang Chen, Vishal Chowdhary, Jonathan Clark, Christian Federmann, Xuedong Huang, Marcin Junczys-Dowmunt, William Lewis, Mu Li, Shujie Liu, Tie-Yan Liu, Renqian Luo, Arul Menezes, Tao Qin, Frank Seide, Xu Tan, Fei Tian, Lijun Wu, Shuangzhi Wu, Yingce Xia, Dongdong Zhang, Zhirui Zhang, and Ming Zhou. 2018. **Achieving human parity on automatic chinese to english news translation.** *CoRR*, abs/1803.05567.
- J. Edward Hu, Huda Khayrallah, Ryan Culkin, Patrick Xia, Tongfei Chen, Matt Post, and Benjamin Van Durme. 2019a. **Improved lexically constrained decoding for translation and monolingual rewriting.** In *Proceedings of the 2019 Conference of the North American Chapter of the Association for Computational Linguistics: Human Language Technologies, Volume 1 (Long and Short Papers)*, pages 839–850, Minneapolis, Minnesota. Association for Computational Linguistics.
- J. Edward Hu, Rachel Rudinger, Matt Post, and Benjamin Van Durme. 2019b. **ParaBank: Monolingual bitext generation and sentential paraphrasing via lexically-constrained neural machine translation.** In *Proceedings of AAAI*.
- J. Edward Hu, Abhinav Singh, Nils Holzenberger, Matt Post, and Benjamin Van Durme. 2019c. **Large-scale, diverse, paraphrastic bitexts via sampling and clustering.** In *Proceedings of the 23rd Conference on Computational Natural Language Learning (CoNLL)*, pages 44–54, Hong Kong, China. Association for Computational Linguistics.
- Yanping Huang, Youlong Cheng, Ankur Bapna, Orhan Firat, Dehao Chen, Mia Chen, HyoukJoong Lee, Jiquan Ngiam, Quoc V Le, Yonghui Wu, and zhifeng Chen. 2019. **Gpipe: Efficient training of giant neural networks using pipeline parallelism.** In H. Wallach, H. Larochelle, A. Beygelzimer, F. d'Alché-Buc, E. Fox, and R. Garnett, editors, *Advances in Neural Information Processing Systems 32*, pages 103–112. Curran Associates, Inc.

- Julia Ive, Frédéric Blain, and Lucia Specia. 2018. [deep-Quest: A framework for neural-based quality estimation](#). In *Proceedings of the 27th International Conference on Computational Linguistics*, pages 3146–3157, Santa Fe, New Mexico, USA. Association for Computational Linguistics.
- Melvin Johnson, Mike Schuster, Quoc V. Le, Maxim Krikun, Yonghui Wu, Zhifeng Chen, Nikhil Thorat, Fernanda Viégas, Martin Wattenberg, Greg Corrado, Macduff Hughes, and Jeffrey Dean. 2017. [Google’s multilingual neural machine translation system: Enabling zero-shot translation](#). *Transactions of the Association for Computational Linguistics*, 5:339–351.
- Armand Joulin, Edouard Grave, Piotr Bojanowski, and Tomas Mikolov. 2016. Bag of tricks for efficient text classification. *arXiv preprint arXiv:1607.01759*.
- Marcin Junczys-Dowmunt. 2018. [Dual conditional cross-entropy filtering of noisy parallel corpora](#). In *Proceedings of the Third Conference on Machine Translation: Shared Task Papers*, pages 888–895, Belgium, Brussels. Association for Computational Linguistics.
- Huda Khayrallah and Philipp Koehn. 2018. [On the impact of various types of noise on neural machine translation](#). In *Proceedings of the 2nd Workshop on Neural Machine Translation and Generation*, pages 74–83, Melbourne, Australia. Association for Computational Linguistics.
- Rakesh Khobragade, Heaven Patel, Anand Namdev, Anish Mishra, and Pushpak Bhattacharyya. 2019. [Machine translation evaluation using bi-directional entailment](#).
- Philipp Koehn. 2004. [Statistical significance tests for machine translation evaluation](#). In *Proceedings of the 2004 Conference on Empirical Methods in Natural Language Processing*, pages 388–395, Barcelona, Spain. Association for Computational Linguistics.
- Philipp Koehn. 2005. Europarl: A parallel corpus for statistical machine translation. In *MT summit*, volume 5, pages 79–86. Citeseer.
- Taku Kudo and John Richardson. 2018. [SentencePiece: A simple and language independent subword tokenizer and detokenizer for neural text processing](#). In *Proceedings of the 2018 Conference on Empirical Methods in Natural Language Processing: System Demonstrations*, pages 66–71, Brussels, Belgium. Association for Computational Linguistics.
- Sneha Kudugunta, Ankur Bapna, Isaac Caswell, and Orhan Firat. 2019. [Investigating multilingual NMT representations at scale](#). In *Proceedings of the 2019 Conference on Empirical Methods in Natural Language Processing and the 9th International Joint Conference on Natural Language Processing (EMNLP-IJCNLP)*, pages 1565–1575, Hong Kong, China. Association for Computational Linguistics.
- Samuel Läubli, Rico Sennrich, and Martin Volk. 2018. [Has machine translation achieved human parity? a case for document-level evaluation](#). In *Proceedings of the 2018 Conference on Empirical Methods in Natural Language Processing*, pages 4791–4796, Brussels, Belgium. Association for Computational Linguistics.
- Gregor Leusch, Nicola Ueffing, and Hermann Ney. 2006. [CDER: Efficient MT evaluation using block movements](#). In *11th Conference of the European Chapter of the Association for Computational Linguistics*, Trento, Italy. Association for Computational Linguistics.
- Tsung-Yi Lin, Michael Maire, Serge Belongie, James Hays, Pietro Perona, Deva Ramanan, Piotr Dollár, and C. Lawrence Zitnick. 2014. Microsoft COCO: Common objects in context. In *Computer Vision – ECCV 2014*, pages 740–755, Cham. Springer International Publishing.
- Yinhan Liu, Jiatao Gu, Naman Goyal, Xian Li, Sergey Edunov, Marjan Ghazvininejad, Mike Lewis, and Luke Zettlemoyer. 2020. [Multilingual denoising pre-training for neural machine translation](#).
- Chi-kiu Lo. 2017. [MEANT 2.0: Accurate semantic MT evaluation for any output language](#). In *Proceedings of the Second Conference on Machine Translation*, pages 589–597, Copenhagen, Denmark. Association for Computational Linguistics.
- Chi-kiu Lo. 2019. [YiSi - a unified semantic MT quality evaluation and estimation metric for languages with different levels of available resources](#). In *Proceedings of the Fourth Conference on Machine Translation (Volume 2: Shared Task Papers, Day 1)*, pages 507–513, Florence, Italy. Association for Computational Linguistics.
- Chi-kiu Lo and Dekai Wu. 2011. [MEANT: An inexpensive, high-accuracy, semi-automatic metric for evaluating translation utility based on semantic roles](#). In *Proceedings of the 49th Annual Meeting of the Association for Computational Linguistics: Human Language Technologies*, pages 220–229, Portland, Oregon, USA. Association for Computational Linguistics.
- Qingsong Ma, Ondřej Bojar, and Yvette Graham. 2018. [Results of the WMT18 metrics shared task: Both characters and embeddings achieve good performance](#). In *Proceedings of the Third Conference on Machine Translation: Shared Task Papers*, pages 671–688, Belgium, Brussels. Association for Computational Linguistics.
- Qingsong Ma, Yvette Graham, Shugen Wang, and Qun Liu. 2017. [Blend: a novel combined MT metric based on direct assessment — CASICT-DCU submission to WMT17 metrics task](#). In *Proceedings of the Second Conference on Machine Translation*, pages 598–603, Copenhagen, Denmark. Association for Computational Linguistics.

- Qingsong Ma, Johnny Wei, Ondřej Bojar, and Yvette Graham. 2019. [Results of the WMT19 metrics shared task: Segment-level and strong MT systems pose big challenges](#). In *Proceedings of the Fourth Conference on Machine Translation (Volume 2: Shared Task Papers, Day 1)*, pages 62–90, Florence, Italy. Association for Computational Linguistics.
- Nitika Mathur, Timothy Baldwin, and Trevor Cohn. 2019. [Putting evaluation in context: Contextual embeddings improve machine translation evaluation](#). In *Proceedings of the 57th Annual Meeting of the Association for Computational Linguistics*, pages 2799–2808, Florence, Italy. Association for Computational Linguistics.
- Nitika Mathur, Timothy Baldwin, and Trevor Cohn. 2020. [Tangled up in BLEU: Reevaluating the evaluation of automatic machine translation evaluation metrics](#). In *Proceedings of the 58th Annual Meeting of the Association for Computational Linguistics*, pages 4984–4997, Online. Association for Computational Linguistics.
- Graham Neubig and Junjie Hu. 2018. [Rapid adaptation of neural machine translation to new languages](#). In *Proceedings of the 2018 Conference on Empirical Methods in Natural Language Processing*, pages 875–880, Brussels, Belgium. Association for Computational Linguistics.
- Toan Q. Nguyen and David Chiang. 2017. [Transfer learning across low-resource, related languages for neural machine translation](#). In *Proceedings of the Eighth International Joint Conference on Natural Language Processing (Volume 2: Short Papers)*, pages 296–301, Taipei, Taiwan. Asian Federation of Natural Language Processing.
- Myle Ott, Michael Auli, David Grangier, and Marc’Aurelio Ranzato. 2018. [Analyzing uncertainty in neural machine translation](#). In *International Conference on Machine Learning*.
- Myle Ott, Sergey Edunov, Alexei Baevski, Angela Fan, Sam Gross, Nathan Ng, David Grangier, and Michael Auli. 2019. [fairseq: A fast, extensible toolkit for sequence modeling](#). In *Proceedings of NAACL-HLT 2019: Demonstrations*.
- Sebastian Padó, Michel Galley, Dan Jurafsky, and Christopher D. Manning. 2009. [Robust machine translation evaluation with entailment features](#). In *Proceedings of the Joint Conference of the 47th Annual Meeting of the ACL and the 4th International Joint Conference on Natural Language Processing of the AFNLP*, pages 297–305, Suntec, Singapore. Association for Computational Linguistics.
- Joybrata Panja and Sudip Kumar Naskar. 2018. [ITER: Improving translation edit rate through optimizable edit costs](#). In *Proceedings of the Third Conference on Machine Translation: Shared Task Papers*, pages 746–750, Belgium, Brussels. Association for Computational Linguistics.
- Kishore Papineni, Salim Roukos, Todd Ward, and Wei-Jing Zhu. 2002. [Bleu: a method for automatic evaluation of machine translation](#). In *Proceedings of the 40th Annual Meeting of the Association for Computational Linguistics*, pages 311–318, Philadelphia, Pennsylvania, USA. Association for Computational Linguistics.
- Ngoc-Quan Pham, Jan Niehues, Thanh-Le Ha, and Alexander Waibel. 2019. [Improving zero-shot translation with language-independent constraints](#). In *Proceedings of the Fourth Conference on Machine Translation (Volume 1: Research Papers)*, pages 13–23, Florence, Italy. Association for Computational Linguistics.
- Maja Popović. 2015. [chrF: character n-gram f-score for automatic MT evaluation](#). In *Proceedings of the Tenth Workshop on Statistical Machine Translation*, pages 392–395, Lisbon, Portugal. Association for Computational Linguistics.
- Maja Popović. 2017. [chrF++: words helping character n-grams](#). In *Proceedings of the Second Conference on Machine Translation*, pages 612–618, Copenhagen, Denmark. Association for Computational Linguistics.
- Maja Popović, David Vilar, Eleftherios Avramidis, and Aljoscha Burchardt. 2011. [Evaluation without references: IBM1 scores as evaluation metrics](#). In *Proceedings of the Sixth Workshop on Statistical Machine Translation*, pages 99–103, Edinburgh, Scotland. Association for Computational Linguistics.
- Matt Post. 2018. [A call for clarity in reporting BLEU scores](#). In *Proceedings of the Third Conference on Machine Translation: Research Papers*, pages 186–191, Belgium, Brussels. Association for Computational Linguistics.
- Aaditya Prakash, Sadid A. Hasan, Kathy Lee, Vivek Datla, Ashequl Qadir, Joey Liu, and Oladimeji Farri. 2016. [Neural paraphrase generation with stacked residual LSTM networks](#). In *Proceedings of COLING 2016, the 26th International Conference on Computational Linguistics: Technical Papers*, pages 2923–2934, Osaka, Japan. The COLING 2016 Organizing Committee.
- Chris Quirk, Chris Brockett, and William Dolan. 2004. [Monolingual machine translation for paraphrase generation](#). In *Proceedings of the 2004 Conference on Empirical Methods in Natural Language Processing*, pages 142–149, Barcelona, Spain. Association for Computational Linguistics.
- Alec Radford, Jeffrey Wu, Rewon Child, David Luan, Dario Amodei, and Ilya Sutskever. 2019. [Language models are unsupervised multitask learners](#). *OpenAI Blog*, 1(8):9.
- Alessandro Raganato, Raúl Vázquez, Mathias Creutz, and Jörg Tiedemann. 2019. [An evaluation of language-agnostic inner-attention-based representations in machine translation](#). In *Proceedings of the*

- 4th Workshop on Representation Learning for NLP (RepLANLP-2019), pages 27–32, Florence, Italy. Association for Computational Linguistics.
- Holger Schwenk. 2018. [Filtering and mining parallel data in a joint multilingual space](#). In *Proceedings of the 56th Annual Meeting of the Association for Computational Linguistics (Volume 2: Short Papers)*, pages 228–234, Melbourne, Australia. Association for Computational Linguistics.
- Holger Schwenk, Vishrav Chaudhary, Shuo Sun, Hongyu Gong, and Francisco Guzmán. 2019. [WikiMatrix: Mining 135m parallel sentences in 1620 language pairs from wikipedia](#). *CoRR*, abs/1907.05791.
- Holger Schwenk and Matthijs Douze. 2017. [Learning joint multilingual sentence representations with neural machine translation](#). In *Proceedings of the 2nd Workshop on Representation Learning for NLP*, pages 157–167, Vancouver, Canada. Association for Computational Linguistics.
- Thibault Sellam, Dipanjan Das, and Ankur Parikh. 2020. [BLEURT: Learning robust metrics for text generation](#). In *Proceedings of the 58th Annual Meeting of the Association for Computational Linguistics*, pages 7881–7892, Online. Association for Computational Linguistics.
- Hiroki Shimanaka, Tomoyuki Kajiwara, and Mamoru Komachi. 2018. [RUSE: Regressor using sentence embeddings for automatic machine translation evaluation](#). In *Proceedings of the Third Conference on Machine Translation: Shared Task Papers*, pages 751–758, Belgium, Brussels. Association for Computational Linguistics.
- Matthew Snover, Bonnie Dorr, Richard Schwartz, Linnea Micciulla, and John Makhoul. 2006. A study of translation edit rate with targeted human annotation. In *Proceedings of association for machine translation in the Americas*, volume 200.
- Peter Stanchev, Weiyue Wang, and Hermann Ney. 2019. [EED: Extended edit distance measure for machine translation](#). In *Proceedings of the Fourth Conference on Machine Translation (Volume 2: Shared Task Papers, Day 1)*, pages 514–520, Florence, Italy. Association for Computational Linguistics.
- Miloš Stanojević and Khalil Sima’an. 2015. [BEER 1.1: ILLC UvA submission to metrics and tuning task](#). In *Proceedings of the Tenth Workshop on Statistical Machine Translation*, pages 396–401, Lisbon, Portugal. Association for Computational Linguistics.
- Jörg Tiedemann and Yves Scherrer. 2019. [Measuring semantic abstraction of multilingual NMT with paraphrase recognition and generation tasks](#). In *Proceedings of the 3rd Workshop on Evaluating Vector Space Representations for NLP*, pages 35–42, Minneapolis, USA. Association for Computational Linguistics.
- Ashish Vaswani, Noam Shazeer, Niki Parmar, Jakob Uszkoreit, Llion Jones, Aidan N Gomez, Łukasz Kaiser, and Illia Polosukhin. 2017. Attention is all you need. In *Advances in neural information processing systems*, pages 5998–6008.
- Weiyue Wang, Jan-Thorsten Peter, Hendrik Rosendahl, and Hermann Ney. 2016. [CharacTer: Translation edit rate on character level](#). In *Proceedings of the First Conference on Machine Translation: Volume 2, Shared Task Papers*, pages 505–510, Berlin, Germany. Association for Computational Linguistics.
- John Wieting and Kevin Gimpel. 2018. [ParaNMT-50M: Pushing the limits of paraphrastic sentence embeddings with millions of machine translations](#). In *Proceedings of the 56th Annual Meeting of the Association for Computational Linguistics (Volume 1: Long Papers)*, pages 451–462, Melbourne, Australia. Association for Computational Linguistics.
- John Wieting, Kevin Gimpel, Graham Neubig, and Taylor Berg-Kirkpatrick. 2019. [Simple and effective paraphrastic similarity from parallel translations](#). In *Proceedings of the 57th Annual Meeting of the Association for Computational Linguistics*, pages 4602–4608, Florence, Italy. Association for Computational Linguistics.
- John Wieting, Jonathan Mallinson, and Kevin Gimpel. 2017. [Learning paraphrastic sentence embeddings from back-translated bitext](#). In *Proceedings of the 2017 Conference on Empirical Methods in Natural Language Processing*, pages 274–285, Copenhagen, Denmark. Association for Computational Linguistics.
- Elizaveta Yankovskaya, Andre Tättar, and Mark Fishel. 2019. [Quality estimation and translation metrics via pre-trained word and sentence embeddings](#). In *Proceedings of the Fourth Conference on Machine Translation (Volume 3: Shared Task Papers, Day 2)*, pages 101–105, Florence, Italy. Association for Computational Linguistics.
- Ryoma Yoshimura, Hiroki Shimanaka, Yukio Matsumura, Hayahide Yamagishi, and Mamoru Komachi. 2019. [Filtering pseudo-references by paraphrasing for automatic evaluation of machine translation](#). In *Proceedings of the Fourth Conference on Machine Translation (Volume 2: Shared Task Papers, Day 1)*, pages 521–525, Florence, Italy. Association for Computational Linguistics.
- Tianyi Zhang, Varsha Kishore, Felix Wu, Kilian Q Weinberger, and Yoav Artzi. 2019. Bertscore: Evaluating text generation with bert. *arXiv preprint arXiv:1904.09675*.
- Tianyi Zhang, Varsha Kishore, Felix Wu, Kilian Q. Weinberger, and Yoav Artzi. 2020. [Bertscore: Evaluating text generation with bert](#). In *International Conference on Learning Representations*.

Liang Zhou, Chin-Yew Lin, Dragos Stefan Munteanu, and Eduard Hovy. 2006. [ParaEval: Using paraphrases to evaluate summaries automatically](#). In *Proceedings of the Human Language Technology Conference of the NAACL, Main Conference*, pages 447–454, New York City, USA. Association for Computational Linguistics.

Barret Zoph, Deniz Yuret, Jonathan May, and Kevin Knight. 2016. [Transfer learning for low-resource neural machine translation](#). In *Proceedings of the 2016 Conference on Empirical Methods in Natural Language Processing*, pages 1568–1575, Austin, Texas. Association for Computational Linguistics.

A Generation Examples

Figure 3 shows sentences generated from both our model and the model trained on ParaBank 2.

We also contrast the conditional probabilities of three outputs for the same input: (1) the sequence generated by the model via beam search; (2) a copy of the input; and (3) a human paraphrase of the input. We use the English side of the zh-en newstest17 (Bojar et al., 2017) as input, so that we can use the second human reference released by Hassan et al. (2018) as a human paraphrase. Table 6 shows the results of scoring a copy of the input, a human paraphrase of the input, and a model’s beam search output, for both our multilingual paraphraser and the ParaBank 2 model.

	ParaBank 2	This Work
$H(BS r_0)$	-0.501	-0.225
$H(r_0 r_0)$	-1.157	-0.303
$H(r_1 r_0)$	-2.246	-2.187
$BLEU(BS, r_0)$	31.9	82.8

Table 6: Average token log probability (H) for a sequence generated via beam search (BS), a copy of the input (r_0), and a high-quality human paraphrase of the input (r_1), for a generative paraphraser vs our model, conditioned on r_0 in all cases. BLEU is also computed for the beam search output of each model, with respect to r_0 . Note that BLEU for r_1 with respect to r_0 is 17.1.

REFERENCE	28-Year-Old Chef Found Dead at San Francisco Mall
THIS WORK	28-Year-Old Chef Found Dead at San Francisco Mall
PARABANK 2	28-year-old chef found dead in a mall in San Francisco
REFERENCE	A 28-year-old chef who had recently moved to San Francisco was found dead in the stairwell of a local mall this week.
THIS WORK	A 28-year-old chef who had recently moved to San Francisco was found dead in the stairwell of a local mall this week.
PARABANK 2	Earlier this week , a 28-year-old chef who had recently moved to San Francisco was found dead on the steps of a local department store .
REFERENCE	But the victim’s brother says he can’t think of anyone who would want to hurt him, saying, ”Things were finally going well for him.”
THIS WORK	But the victim’s brother says he can’t think of anyone who would want to hurt him, saying, ”Things were finally going well for him.”
PARABANK 2	But the victim’s brother said he couldn’t think of anyone who’d want to hurt him, and he said he was finally okay .
REFERENCE	The body found at the Westfield Mall Wednesday morning was identified as 28-year-old San Francisco resident Frank Galicia, the San Francisco Medical Examiner’s Office said.
THIS WORK	The body found at the Westfield Mall Wednesday morning was identified as 28-year-old San Francisco resident Frank Galicia, the San Francisco Medical Examiner’s Office said.
PARABANK 2	The body found Wednesday morning at the Westfield Mall has been identified by the San Francisco Medical Examiner’s Office as 28-year-old San Francisco resident Frank Galicia.
REFERENCE	The San Francisco Police Department said the death was ruled a homicide and an investigation is ongoing.
THIS WORK	The San Francisco Police Department said the death was deemed a homicide and an investigation is ongoing.
PARABANK 2	The San Francisco P.D. says the death has been ruled a murder and is under investigation .
REFERENCE	The victim’s brother, Louis Galicia, told ABC station KGO in San Francisco that Frank, previously a line cook in Boston, had landed his dream job as line chef at San Francisco’s Sons & Daughters restaurant six months ago.
THIS WORK	The victim’s brother, Louis Galicia, told ABC station KGO in San Francisco that Frank, formerly a line cook in Boston, had landed his dream job as line chef at San Francisco’s Sons & Daughters restaurant six months ago.
PARABANK 2	The Victim’s brother, Louis Galicia, told ABC station KGO in San Francisco that Frank, who used to be a line chef in Boston, quit his dream job six months ago as a line chef at the Sons & Daughters Restaurant in San Francisco.
REFERENCE	A spokesperson for Sons & Daughters said they were ”shocked and devastated” by his death.
THIS WORK	A spokesperson for Sons & Daughters said they were ”shocked and devastated” by his death
PARABANK 2	A spokesman for Sons & Daughters said that his death ”shocked and devastated them .”
REFERENCE	”We are a small team that operates like a close knit family and he will be dearly missed,” the spokesperson said.
THIS WORK	”We are a small team that operates like a close-knit family and he will be dearly missed,” the spokesman said.
PARABANK 2	”We are a small team, operating as a close-knit family, and we will miss him dearly,” said the spokesman .
REFERENCE	Our thoughts and condolences are with Frank’s family and friends at this difficult time.
THIS WORK	Our thoughts and condolences are with Frank’s family and friends at this difficult time.
PARABANK 2	Our thoughts and condolences go out to Frank’s family and friends in these difficult times.
REFERENCE	Louis Galicia said Frank initially stayed in hostels, but recently, ”Things were finally going well for him.”
THIS WORK	Louis Galicia said Frank initially stayed in hostels, but recently, ”Things were finally going well for him.”
PARABANK 2	Louis Galicia said that Frank initially stayed in the dormitory , but lately , He’s finally doing okay .”

Figure 3: Sentences generated via beam search (beamwidth 5) for the multilingual model presented in this work vs ParaBank 2. We note that our model tends to produce copies or near copies of the input, which is the desired behavior for our application. Changes are emphasized with **bold** or **strikethrough**. The model trained on ParaBank 2 tends to produce output with lexical/syntactic changes, which occasionally also significantly change the meaning of the sentence (denoted in **red**). References (paraphraser inputs) are the first ten sentences of WMT17 zh-en.

B Data Details for Replication

Much of our data comes from WikiMatrix (Schwenk et al., 2019), a large collection of parallel data extracted from Wikipedia, and for more domain variety, we added Global Voices,¹⁰ EuroParl (Koehn, 2005) (random subset of to 100k sentence pairs per language pair), SETimes,¹¹ United Nations (Eisele and Chen, 2010) (random sample of 1M sentence pairs per language pair). We also included WMT Kazakh–English and Kazakh–Russian data from WMT, to be able to evaluate on Kazakh.

WMT Kazakh–English and Kazakh–Russian were limited to the best 1M and 200k sentence pairs, respectively, as judged by LASER. We used a margin threshold of 1.05 for WikiMatrix and a threshold of 1.04 for the remaining datasets, as we expect them to be cleaner. We find that FastText classifies many sentences as non-English when they contain mostly English but also contain a few non-English words, especially from lower resource languages. To remedy this, we performed language identification (LID) on 5-grams and filtered out sentences for which LID did not classify at least half of the 5-grams as the expected language.

We filtered out sentences where there was more than 60% overlap in 3-grams or 40% overlap in 4-grams. Via manual inspection, this seemed to provide a good trade-off between allowing numbers and named entities to be copied, and filtering out sentences that were clearly not translated. We perform tokenization with SentencePiece (Kudo and Richardson, 2018) prior to filtering, using a 200k vocabulary for all language pairs, to account for languages like Chinese which do not denote word boundaries. Note that this vocabulary was used only for filtering, not for training the final model.

We limited training to languages with at least 1M examples, which resulted in 39 languages. Figure 4 shows the languages and amount of data in each language.

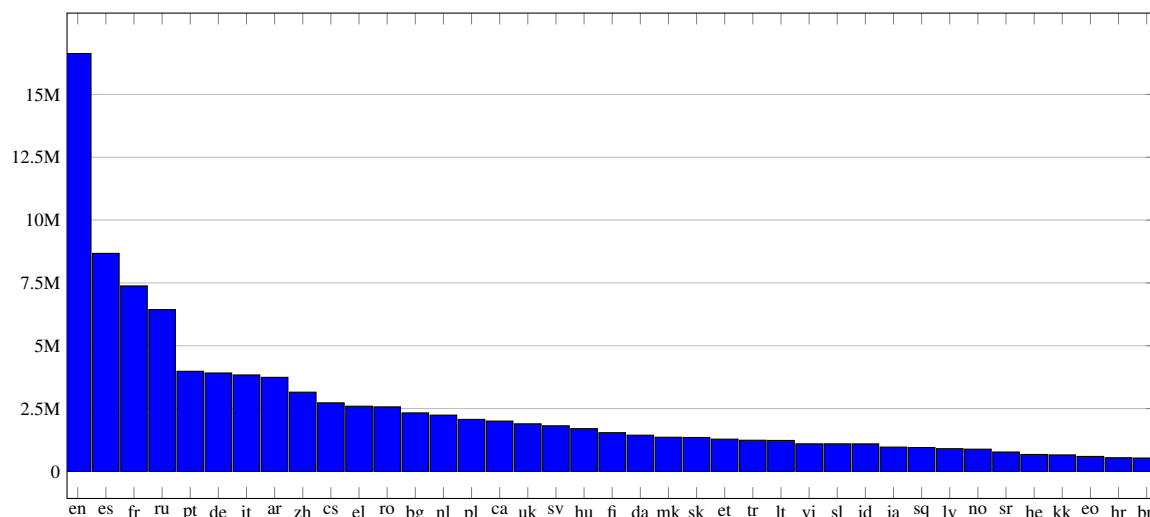


Figure 4: Distribution of the 39 languages (ISO 639-1 language code) of the 99.8M training sentences. English accounts for 16.7%. Spanish, French, Russian, Portuguese, German, and Italian account for a combined 34.3%. The bottom 20 languages account for only 21.9% combined.

¹⁰<http://casmacat.eu/corpus/global-voices.html>

¹¹<http://nlp.ffzg.hr/resources/corpora/setimes/>

C Model Training Details for Replication

C.1 Primary Model

We train a SentencePiece (Kudo and Richardson, 2018) model with a 64k vocabulary size on the concatenation of all data, and filter sentences with length greater than 200 subwords. Multilingual NMT performance has been found to increase significantly with model size – for example, the best performance of Huang et al. (2019) is with their largest model which has 6 billion parameters. Training such a model is well beyond the scope of this work, but we train a model as large as feasible given our compute budget constraints. We train a Transformer (Vaswani et al., 2017) in fairseq (Ott et al., 2019) with eight encoder layers, eight decoder layers, an embedding size of 1280, feed forward layer size of 12288, 20 attention heads, learning rate of 0.0004, batch size of 1800 tokens with gradient accumulation over 200 batches, gradient clipping of 1.2, and dropout of 0.1. The model has approximately 745M parameters for 39 languages. We train for 6 epochs, which takes approximately 9 days on a p3.16xlarge instance rented from Amazon AWS, which has 8 Volta V100 GPUs with 16 GB of memory each. No hyperparameters were swept, as training a single model used the majority of our compute budget (the total cost for training this model was approximately \$13,000 USD). However, we did restart training after discovering that LID was not performing well and adding the 5-gram LID filtering.

C.2 ParaBank 2 Model

We train a contrastive, English-only paraphraser on the ParaBank 2 dataset (Hu et al., 2019c). We train a Transformer with an 8-layer encoder, 8-layer decoder, 1024 dimensional embeddings, embedding sizes of 1024, feed-forward size of 4096, and 16 attention heads. We use a SentencePiece model with a 16k vocabulary size. Dropout is 0.3, label smoothing is 0.1, and learning rate is 0.0005. The model has approximately 253M parameters for 1 language. Batch size is 31200 tokens, and the model trains for approximately 6 weeks (33 epochs) on 4 Nvidia 2080 GPUs.

C.3 Language Model

We train a multilingual language model on the same data as our multilingual NMT system.

The model architecture is based on GPT-2 (Radford et al., 2019), and we use the fairseq `transformer_lm_gpt2_small` implementation. We train for 200k updates (18 epochs) of approximately 131k tokens. The model has 369M parameters for 39 languages. We train with shared embeddings and a learning rate of 0.0005, and we stop gradients at sentence boundaries, using `--sample-break-mode eos` as the model will be used to evaluate individual sentences. Other parameters match the fairseq defaults. The model trained for approximately 4 weeks on 4 Nvidia TITAN RTX GPUs.

C.4 Autoencoder

We use the pretrained “multilingual denoising pre-trained model” (mBART) model of Liu et al. (2020), as it works in all languages of interest. Their model is designed to be fine-tuned to translation tasks, and their fine-tuning introduces subtle changes to the decoder that are required for inference. In order to adapt it to our task, we therefore fine-tune for a single update with a learning rate of 0. We then produce scores with the model in the same manner as Prism-ref. The model has approximately 680M parameters for 25 languages. We did not train this model but note that doing so required substantial compute power – Liu et al. (2020) note that they trained for approximately 2.5 weeks on 256 Nvidia V100 GPUS, each with 32GB of memory.

C.5 Baselines

We compare to BLEURT (Sellam et al., 2020) using the authors’ recommended “BLEURT-Base 128”¹² We compare to BERTscore F1 (Zhang et al., 2020) using the model and code provided by the authors.¹³

¹²<https://github.com/google-research/bleurt>

¹³https://github.com/Tiiiger/bert_score

The remaining baseline results are computed using the metric scores as submitted to (Ma et al., 2019)¹⁴

¹⁴<http://data.statmt.org/wmt19/translation-task/wmt19-submitted-data-v3.tgz>

D WMT 2018 (Development set) Results: System-level, Segment-level, and Sweeps

Figure 5 shows results on the development set (WMT18) for sweeping various linear combinations.

Table 7, Table 8, Table 9 and Table 10, show full segment- and system- level results, into and out of English, for the WMT 2018 MT metrics shared task, along with all baselines and submitted systems.

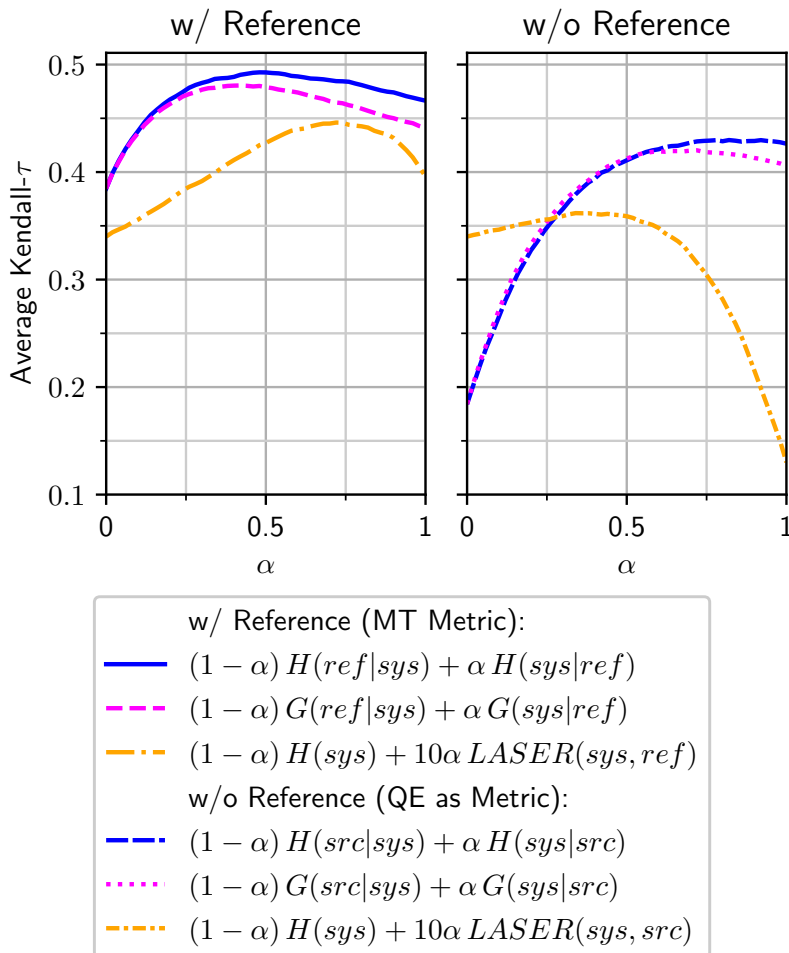


Figure 5: Linear combinations of scoring each direction using length-normalized (H) vs un-normalized (G) log probability for our method, and length-normalized language model probabilities (H) vs LASER for our contrastive method. In both cases, we explore scoring using the human reference ref vs the source src. Results are segment-level τ on our development set (WMT18), averaged across all language pairs.

	cs-en	de-en	et-en	fi-en	ru-en	tr-en	zh-en
n	5110	77811	56721	15648	10404	8525	33357
BEER [‡] (Stanojević and Sima'an, 2015)	0.295	0.481	0.341	0.232	0.288	0.229	0.214
BERTSCORE (Zhang et al., 2019, 2020)	0.404	0.550	0.397	0.296	0.340	0.292	0.253
BLEND [‡] (Ma et al., 2017)	0.322	0.492	0.354	0.226	0.290	0.232	0.217
CHARACTER [‡] (Wang et al., 2016)	0.256	0.450	0.286	0.185	0.244	0.172	0.202
CHRF [†] (Popović, 2015)	0.288	0.479	0.328	0.229	0.269	0.210	0.208
CHRF+ [†] (Popović, 2017)	0.288	0.479	0.332	0.234	0.279	0.218	0.207
ITER [‡] (Panja and Naskar, 2018)	0.198	0.396	0.235	0.128	0.139	-0.029	0.144
METEOR++ [‡] (Shimanaka et al., 2018)	0.270	0.457	0.329	0.207	0.253	0.204	0.179
RUSE [‡] (Shimanaka et al., 2018)	0.347	0.498	0.368	0.273	0.311	0.259	0.218
SENTBLEU [†] (Papineni et al., 2002)	0.233	0.415	0.285	0.154	0.228	0.145	0.178
UHH_TSKM [‡] (Duma and Menzel, 2017)	0.274	0.436	0.300	0.168	0.235	0.154	0.151
YISI-0 [‡] (Lo, 2019)	0.301	0.474	0.330	0.225	0.294	0.215	0.205
YISI-1 [‡] (Lo, 2019)	0.319	0.488	0.351	0.231	0.300	0.234	0.211
YISI-1_SRL [‡] (Lo, 2019)	0.317	0.483	0.345	0.237	0.306	0.233	0.209
Prism-ref (This Work)	0.423	0.560	0.409	0.317	0.366	0.309	0.263
Prism-ref w/ ParaBank 2 (Contrastive)	0.386	0.538	0.399	0.309	0.340	0.275	0.244
LASER + LM (Contrastive)	0.364	0.526	0.378	0.265	0.305	0.257	0.243
Prism-src (This work)	0.355	0.515	0.370	0.257	0.308	0.213	0.194
LM	0.285	0.438	0.285	0.198	0.280	0.123	0.192
LASER	0.310	0.494	0.364	0.232	0.257	0.248	0.207
mBART (Contrastive)	0.251	0.455	0.315	0.199	0.248	0.196	0.181

Table 7: WMT18 Segment-level results, to English. n denotes number of pairwise judgments. **Bold** denotes top scoring method and any other methods with whose 95% confidence interval overlaps with that of a top method. We exclude BLEURT (Sellam et al., 2020) as it was directly trained on WMT18 judgements. †:WMT18 Baseline (Ma et al., 2018) ‡:WMT18 Metric Submission (Ma et al., 2018)

	en-cs	en-de	en-et	en-fi	en-ru	en-tr	en-zh
n	5413	19711	32202	9809	22181	1358	28602
BEER [‡] (Stanojević and Sima'an, 2015)	0.518	0.686	0.558	0.511	0.403	0.374	0.302
BERTSCORE (Zhang et al., 2019, 2020)	0.559	0.727	0.584	0.538	0.424	0.389	0.364
BLEND [‡] (Ma et al., 2017)	—	—	—	—	0.394	—	—
CHARACTER [‡] (Wang et al., 2016)	0.414	0.604	0.464	0.403	0.352	0.404	0.313
CHRF [†] (Popović, 2015)	0.516	0.677	0.572	0.520	0.383	0.409	0.328
CHRF+ [†] (Popović, 2017)	0.513	0.680	0.573	0.525	0.392	0.405	0.328
ITER [‡] (Panja and Naskar, 2018)	0.333	0.610	0.392	0.311	0.291	0.236	—
SENTBLEU [†] (Papineni et al., 2002)	0.389	0.620	0.414	0.355	0.330	0.261	0.311
YISI-0 [‡] (Lo, 2019)	0.471	0.661	0.531	0.464	0.394	0.376	0.318
YISI-1 [‡] (Lo, 2019)	0.496	0.691	0.546	0.504	0.407	0.418	0.323
YISI-1_SRL [‡] (Lo, 2019)	—	0.696	—	—	—	—	0.310
Prism-ref (This Work)	0.667	0.799	0.705	0.667	0.469	0.574	0.371
LASER + LM (Contrastive)	0.587	0.746	0.628	0.629	0.450	0.501	0.367
Prism-src (This work)	0.552	0.732	0.636	0.626	0.409	0.505	0.298
LM	0.459	0.655	0.408	0.511	0.375	0.331	0.221
LASER	0.480	0.677	0.585	0.511	0.402	0.432	0.338
mBART (Contrastive)	0.404	0.594	0.405	0.410	0.356	0.303	0.305

Table 8: WMT18 Segment-level results, from English. n denotes number of pairwise judgments. **Bold** denotes top scoring method and any other methods with whose 95% confidence interval overlaps with that of a top method. †:WMT18 Baseline (Ma et al., 2018) ‡:WMT18 Metric Submission (Ma et al., 2018)

n	cs-en 5	de-en 16	et-en 14	fi-en 9	ru-en 8	tr-en 5	zh-en 14
BEER [‡] (Stanojević and Sima'an, 2015)	0.958	0.994	0.985	0.991	0.982	0.870	0.976
BERTSCORE (Zhang et al., 2019, 2020)	0.990	0.999	0.990	0.998	0.935	0.499	0.956
BLEND [‡] (Ma et al., 2017)	0.973	0.991	0.985	0.994	0.993	0.801	0.976
BLEU [†] (Papineni et al., 2002)	0.970	0.971	0.986	0.973	0.979	0.657	0.978
CDER [†] (Leusch et al., 2006)	0.972	0.980	0.990	0.984	0.980	0.664	0.982
CHARACTER [‡] (Wang et al., 2016)	0.970	0.993	0.979	0.989	0.991	0.782	0.950
CHRF [†] (Popović, 2015)	0.966	0.994	0.981	0.987	0.990	0.452	0.960
CHRF+ [†] (Popović, 2017)	0.966	0.993	0.981	0.989	0.990	0.174	0.964
ITER [‡] (Panja and Naskar, 2018)	0.975	0.990	0.975	0.996	0.937	0.861	0.980
METEOR++ [‡] (Shimanaka et al., 2018)	0.945	0.991	0.978	0.971	0.995	0.864	0.962
NIST [†] (Doddington, 2002)	0.954	0.984	0.983	0.975	0.973	0.970	0.968
PER [†]	0.970	0.985	0.983	0.993	0.967	0.159	0.931
RUSE [‡] (Shimanaka et al., 2018)	0.981	0.997	0.990	0.991	0.988	0.853	0.981
TER [†] (Snover et al., 2006)	0.950	0.970	0.990	0.968	0.970	0.533	0.975
UHH.TSKM [‡] (Duma and Menzel, 2017)	0.952	0.980	0.989	0.982	0.980	0.547	0.981
WER [†]	0.951	0.961	0.991	0.961	0.968	0.041	0.975
YISI-0 [‡] (Lo, 2019)	0.956	0.994	0.975	0.978	0.988	0.954	0.957
YISI-1 [‡] (Lo, 2019)	0.950	0.992	0.979	0.973	0.991	0.958	0.951
YISI-1_SRL [‡] (Lo, 2019)	0.965	0.995	0.981	0.977	0.992	0.869	0.962
Prism-ref (This Work)	0.988	0.995	0.971	0.998	0.995	0.730	0.989
Prism-ref w/ ParaBank 2 (Contrastive)	0.992	0.989	0.964	0.998	0.996	0.896	0.986
LASER + LM (Contrastive)	0.988	0.991	0.965	0.994	0.745	0.297	0.890
Prism-src (This work)	0.984	0.991	0.964	0.987	0.970	0.896	0.958
LM	0.986	0.970	0.954	0.898	0.951	0.891	0.972
LASER	0.978	0.986	0.953	0.984	0.489	0.968	0.591
mBART (Contrastive)	0.955	0.996	0.987	0.995	0.981	0.721	0.980

Table 9: WMT18 System-level results, to English. n denotes number of MT systems. **Bold** denotes top scoring method and any other methods with whose 95% confidence interval overlaps with that of a top method. We exclude BLEURT (Sellam et al., 2020) as it was directly trained on WMT18 judgements. †:WMT18 Baseline (Ma et al., 2018) ‡:WMT18 Metric Submission (Ma et al., 2018)

n	en-cs 5	en-de 16	en-et 14	en-fi 12	en-ru 9	en-tr 8	en-zh 14
BEER [‡] (Stanojević and Sima'an, 2015)	0.992	0.991	0.980	0.961	0.988	0.965	0.928
BERTSCORE (Zhang et al., 2019, 2020)	0.997	0.989	0.982	0.972	0.990	0.908	0.967
BLEND [‡] (Ma et al., 2017)	–	–	–	–	0.988	–	–
BLEU [†] (Papineni et al., 2002)	0.995	0.981	0.975	0.962	0.983	0.826	0.947
CDER [†] (Leusch et al., 2006)	0.997	0.986	0.984	0.964	0.984	0.861	0.961
CHARACTER [‡] (Wang et al., 2016)	0.993	0.989	0.956	0.974	0.983	0.833	0.983
CHRF [†] (Popović, 2015)	0.990	0.990	0.981	0.969	0.989	0.948	0.944
CHRF+ [†] (Popović, 2017)	0.990	0.989	0.982	0.970	0.989	0.943	0.943
ITER [‡] (Panja and Naskar, 2018)	0.915	0.984	0.981	0.973	0.975	0.865	–
NIST [†] (Doddington, 2002)	0.999	0.986	0.983	0.949	0.990	0.902	0.950
PER [†]	0.991	0.981	0.958	0.906	0.988	0.859	0.964
TER [†] (Snover et al., 2006)	0.997	0.988	0.981	0.942	0.987	0.867	0.963
WER [†]	0.997	0.986	0.981	0.945	0.985	0.853	0.957
YISI-0 [‡] (Lo, 2019)	0.973	0.985	0.968	0.944	0.990	0.990	0.957
YISI-1 [‡] (Lo, 2019)	0.987	0.985	0.979	0.940	0.992	0.976	0.963
YISI-1_SRL [‡] (Lo, 2019)	–	0.990	–	–	–	–	0.952
Prism-ref (This Work)	0.962	0.987	0.973	0.976	0.989	0.894	0.977
LASER + LM (Contrastive)	0.953	0.984	0.980	0.976	0.984	0.927	0.982
Prism-src (This work)	0.850	0.984	0.949	0.964	0.960	0.864	0.940
LM	0.854	0.985	0.837	0.938	0.959	0.830	0.859
LASER	0.995	0.965	0.937	0.978	0.993	0.895	0.978
mBART (Contrastive)	0.985	0.989	0.977	0.959	0.987	0.963	0.689

Table 10: WMT18 System-level results, from English. n denotes number of MT systems. **Bold** denotes top scoring method and any other methods with whose 95% confidence interval overlaps with that of a top method. †:WMT18 Baseline (Ma et al., 2018) ‡:WMT18 Metric Submission (Ma et al., 2018)

E WMT 2019 Metric and QE as Metric Segment-Level Results

Table 11, Table 12, and Table 13 show segment-level metrics (excluding QE as a metric) results, for language pairs into, out of, and not including English, for the WMT 2019 MT metrics shared task, along with all baselines and submitted systems.

Table 14, Table 15, and Table 16 show segment-level QE as a metric results, for language pairs into, out of, and not including English, for the WMT 2019 MT metrics shared task, along with all baselines and submitted systems.

n	de-en	fi-en	gu-en	kk-en	lt-en	ru-en	zh-en
85365	38307	31139	27094	21862	46172	31070	
BEER [‡] (Stanojević and Sima’an, 2015)	0.128	0.283	0.260	0.421	0.315	0.189	0.371
BERT [‡] (Mathur et al., 2019)	0.142	0.331	0.291	0.421	0.353	0.195	0.399
BERTSCORE (Zhang et al., 2019, 2020)	0.176	0.345	0.320	0.432	0.381	0.223	0.430
BLEURT (Sellam et al., 2020)	0.204	0.367	0.311	0.447	0.387	0.228	0.423
CHARACTER [‡] (Wang et al., 2016)	0.101	0.253	0.190	0.340	0.254	0.155	0.337
CHR [†] (Popović, 2015)	0.122	0.286	0.256	0.389	0.301	0.180	0.371
CHR [†] (Popović, 2017)	0.125	0.289	0.257	0.394	0.303	0.182	0.374
EED [‡] (Stanchev et al., 2019)	0.120	0.281	0.264	0.392	0.298	0.176	0.376
ESIM [‡] (Chen et al., 2017; Mathur et al., 2019)	0.167	0.337	0.303	0.435	0.359	0.201	0.396
HLEPORA_BASELINE [‡] (Han et al., 2012, 2013)	—	—	—	0.372	—	—	0.339
METEOR++_2.0(SYNTAX) [‡] (Guo and Hu, 2019)	0.084	0.274	0.237	0.395	0.291	0.156	0.370
METEOR++_2.0(SYNTAX+COPY) [‡] (Guo and Hu, 2019)	0.094	0.273	0.244	0.402	0.287	0.163	0.367
PREP [‡] (Yoshimura et al., 2019)	0.030	0.197	0.192	0.386	0.193	0.124	0.267
SENTBLEU [†] (Papineni et al., 2002)	0.056	0.233	0.188	0.377	0.262	0.125	0.323
WMDO [‡] (Chow et al., 2019)	0.096	0.281	0.260	0.420	0.300	0.162	0.362
YISI-0 [‡] (Lo, 2019)	0.117	0.271	0.263	0.402	0.289	0.178	0.355
YISI-1 [‡] (Lo, 2019)	0.164	0.347	0.312	0.440	0.376	0.217	0.426
YISI-1_SRL [‡] (Lo, 2019)	0.199	0.346	0.306	0.442	0.380	0.222	0.431
Prism-ref (This Work)	0.204	0.357	0.313	0.434	0.382	0.225	0.438
Prism-ref w/ ParaBank 2 (Contrastive)	0.184	0.341	0.326	0.425	0.373	0.207	0.432
LASER + LM (Contrastive)	0.190	0.335	0.319	0.428	0.368	0.207	0.416
LM	0.083	0.253	0.165	0.120	0.281	0.130	0.210
LASER	0.151	0.301	0.305	0.420	0.325	0.193	0.397
mBART (Contrastive)	0.136	0.255	0.246	0.377	0.298	0.162	0.349

Table 11: WMT19 Segment-level results, metrics (excludes QE as metric), to English. n denotes number of pairwise judgments. **Bold** denotes top scoring method and any other methods with whose 95% confidence interval overlaps with that of a top method. †:WMT19 Baseline (Ma et al., 2019) ‡:WMT19 Metric Submission (Ma et al., 2019)

n	en-cs	en-de	en-fi	en-gu	en-kk	en-lt	en-ru	en-zh
	27178	99840	31820	11355	18172	17401	24334	18658
BEER [‡] (Stanojević and Sima’an, 2015)	0.443	0.316	0.514	0.537	0.516	0.441	0.542	0.232
BERTSCORE (Zhang et al., 2019, 2020)	0.485	0.345	0.524	0.558	0.533	0.463	0.580	0.347
CHARACTER [‡] (Wang et al., 2016)	0.349	0.264	0.404	0.500	0.351	0.311	0.432	0.094
CHRF [†] (Popović, 2015)	0.455	0.326	0.514	0.534	0.479	0.446	0.539	0.301
CHRF+ [†] (Popović, 2017)	0.458	0.327	0.514	0.538	0.491	0.448	0.543	0.296
EED [‡] (Stanchev et al., 2019)	0.431	0.315	0.508	0.568	0.518	0.425	0.546	0.257
ESIM [‡] (Chen et al., 2017; Mathur et al., 2019)	–	0.329	0.511	–	0.510	0.428	0.572	0.339
HLEPORA_BASELINE [‡] (Han et al., 2012, 2013)	–	–	–	0.463	0.390	–	–	–
SENTBLEU [†] (Papineni et al., 2002)	0.367	0.248	0.396	0.465	0.392	0.334	0.469	0.270
YISI-0 [‡] (Lo, 2019)	0.406	0.304	0.483	0.539	0.494	0.402	0.535	0.266
YISI-1 [‡] (Lo, 2019)	0.475	0.351	0.537	0.551	0.546	0.470	0.585	0.355
YISI-1_SRL [‡] (Lo, 2019)	–	0.368	–	–	–	–	–	0.361
Prism-ref (This Work)	0.582	0.427	0.591	0.313	0.531	0.558	0.584	0.376
LASER + LM (Contrastive)	0.535	0.401	0.568	0.306	0.408	0.503	0.640	0.356
LM	0.439	0.329	0.477	0.181	0.284	0.430	0.586	0.279
LASER	0.408	0.334	0.509	0.340	0.363	0.396	0.511	0.284
mBART (Contrastive)	0.345	0.302	0.401	0.528	0.462	0.365	0.443	0.280

Table 12: WMT19 Segment-level results, metrics (excludes QE as metric results), from English. n denotes number of pairwise judgments. **Bold** denotes top scoring method and any other methods with whose 95% confidence interval overlaps with that of a top method. †:WMT19 Baseline (Ma et al., 2019) ‡:WMT19 Metric Submission (Ma et al., 2019)

n	de-cs	de-fr	fr-de
	35793	4862	1369
BEER [‡] (Stanojević and Sima’an, 2015)	0.337	0.293	0.265
BERTSCORE (Zhang et al., 2019, 2020)	0.352	0.325	0.274
CHARACTER [‡] (Wang et al., 2016)	0.232	0.251	0.224
CHRF [†] (Popović, 2015)	0.326	0.284	0.275
CHRF+ [†] (Popović, 2017)	0.326	0.284	0.278
EED [‡] (Stanchev et al., 2019)	0.345	0.301	0.267
ESIM [‡] (Chen et al., 2017; Mathur et al., 2019)	0.331	0.290	0.289
HLEPORA_BASELINE [‡] (Han et al., 2012, 2013)	0.207	0.239	–
SENTBLEU [†] (Papineni et al., 2002)	0.203	0.235	0.179
YISI-0 [‡] (Lo, 2019)	0.331	0.296	0.277
YISI-1 [‡] (Lo, 2019)	0.376	0.349	0.310
YISI-1_SRL [‡] (Lo, 2019)	–	–	0.299
Prism-ref (This Work)	0.458	0.453	0.426
LASER + LM (Contrastive)	0.431	0.401	0.381
LM	0.294	0.235	0.138
LASER	0.397	0.352	0.348
mBART (Contrastive)	0.262	0.255	0.236

Table 13: WMT19 Segment-level results, metrics (excludes QE as metric), non-English. n denotes number of pairwise judgments. **Bold** denotes top scoring method and any other methods with whose 95% confidence interval overlaps with that of a top method. †:WMT19 Baseline (Ma et al., 2019) ‡:WMT19 Metric Submission (Ma et al., 2019)

	de-en	fi-en	gu-en	kk-en	lt-en	ru-en	zh-en
n	85365	38307	31139	27094	21862	46172	31070
IBM1-MORPHEME* (Popović et al., 2011)	-0.074	0.009	—	—	0.069	—	—
IBM1-POS4GRAM* (Popović et al., 2011)	-0.153	—	—	—	—	—	—
LASIM*	-0.024	—	—	—	—	0.022	—
LP*	-0.096	—	—	—	—	-0.035	—
UNI* (Yankovskaya et al., 2019)	0.022	0.202	—	—	—	0.084	—
UNI+* (Yankovskaya et al., 2019)	0.015	0.211	—	—	—	0.089	—
YISI-2* (Lo, 2019)	0.068	0.126	-0.001	0.096	0.075	0.053	0.253
YISI-2_SRL* (Lo, 2019)	0.068	—	—	—	—	—	0.246
Prism-src (This work)	0.109	0.300	0.102	0.391	0.356	0.178	0.336

Table 14: WMT19 Segment-level results, QE as a metric, to English. n denotes number of pairwise judgments. **Bold** denotes top scoring method and any other methods with whose 95% confidence interval overlaps with that of a top method. *:WMT19 QE-as-Metric Submission (Fonseca et al., 2019)

	en-cs	en-de	en-fi	en-gu	en-kk	en-lt	en-ru	en-zh
n	27178	99840	31820	11355	18172	17401	24334	18658
IBM1-MORPHEME* (Popović et al., 2011)	-0.135	-0.003	-0.005	—	—	-0.165	—	—
IBM1-POS4GRAM* (Popović et al., 2011)	—	-0.123	—	—	—	—	—	—
LASIM*	—	0.147	—	—	—	—	-0.240	—
LP*	—	-0.119	—	—	—	—	-0.158	—
UNI* (Yankovskaya et al., 2019)	0.060	0.129	0.351	—	—	—	0.226	—
UNI+* (Yankovskaya et al., 2019)	—	—	—	—	—	—	0.222	—
USFD* (Ive et al., 2018)	—	-0.029	—	—	—	—	0.136	—
USFD-TL* (Ive et al., 2018)	—	-0.037	—	—	—	—	0.191	—
YISI-2* (Lo, 2019)	0.069	0.212	0.239	0.147	0.187	0.003	-0.155	0.044
YISI-2_SRL* (Lo, 2019)	—	0.236	—	—	—	—	—	0.034
Prism-src (This work)	0.470	0.402	0.555	0.215	0.507	0.499	0.486	0.287

Table 15: WMT19 Segment-level results, QE as a metric, from English. n denotes number of pairwise judgments. **Bold** denotes top scoring method and any other methods with whose 95% confidence interval overlaps with that of a top method. *:WMT19 QE-as-Metric Submission (Fonseca et al., 2019)

	de-cs	de-fr	fr-de
n	35793	4862	1369
IBM1-MORPHEME* (Popović et al., 2011)	0.048	-0.013	-0.053
IBM1-POS4GRAM* (Popović et al., 2011)	—	-0.074	-0.097
YISI-2* (Lo, 2019)	0.199	0.186	0.066
Prism-src (This work)	0.444	0.371	0.316

Table 16: WMT19 Segment-level results, QE as a metric, non-English. n denotes number of pairwise judgments. **Bold** denotes top scoring method and any other methods with whose 95% confidence interval overlaps with that of a top method. *:WMT19 QE-as-Metric Submission (Fonseca et al., 2019)

F WMT 2019 System-Level results for Top 4 Systems

Table 17, Table 18, and Table 19 show system-level results for just the top 4 systems, for language pairs into, out of, and not including English, for WMT 2019. We show statistical significance following the shared task but note it appears extremely noisy.

n	de-en 4	fi-en 4	gu-en 4	kk-en 4	lt-en 4	ru-en 4	zh-en 4
BEER [‡] (Stanojević and Sima'an, 2015)	-0.760	0.065	0.981	0.957	0.423	-0.122	-0.625
BERT [‡] (Mathur et al., 2019)	0.251	0.430	0.966	0.864	0.518	0.505	0.402
BERTSCORE (Zhang et al., 2019, 2020)	0.272	0.683	0.913	0.897	0.753	0.456	-0.220
BLEU [†] (Papineni et al., 2002)	-0.822	-0.275	0.966	0.958	0.625	-0.356	-0.694
BLEURT (Sellam et al., 2020)	0.953	0.714	0.881	0.929	0.841	0.522	0.660
CDER [†] (Leusch et al., 2006)	-0.740	-0.214	0.940	0.948	0.389	-0.108	-0.611
CHARACTER [‡] (Wang et al., 2016)	-0.664	-0.079	0.980	0.924	0.386	0.052	-0.092
CHRF [†] (Popović, 2015)	-0.610	0.170	0.986	0.893	0.377	-0.043	-0.147
CHRF+ [†] (Popović, 2017)	-0.612	0.157	0.982	0.886	0.341	-0.019	-0.093
EED [‡] (Stanchev et al., 2019)	-0.503	0.125	0.978	0.904	0.323	0.033	-0.06
ESIM [‡] (Chen et al., 2017; Mathur et al., 2019)	0.895	0.740	0.847	0.965	0.896	0.534	0.819
HLEPORA.BASELINE [‡] (Han et al., 2012, 2013)	—	—	—	0.816	—	—	0.312
HLEPORB.BASELINE [‡] (Han et al., 2012, 2013)	—	—	—	0.816	0.257	—	0.312
METEOR++_2.0(SYNTAX) [‡] (Guo and Hu, 2019)	-0.591	0.349	0.978	0.912	0.413	0.024	-0.214
METEOR++_2.0(SYNTAX+COPY) [‡] (Guo and Hu, 2019)	-0.587	0.399	0.980	0.888	0.413	0.051	-0.17
NIST [†] (Dodington, 2002)	-0.82	0.111	0.963	0.913	0.746	-0.458	-0.906
PER [†]	-0.787	0.232	0.945	0.731	0.086	-0.081	0.730
PREP [‡] (Yoshimura et al., 2019)	-0.981	0.754	0.976	0.863	0.171	-0.357	-0.927
SACREBLEU.BLEU [†] (Post, 2018)	-0.823	-0.333	0.966	0.958	0.426	-0.217	-0.694
SACREBLEU.CHRF [†] (Post, 2018)	-0.633	0.113	0.954	0.875	0.311	-0.094	0.347
TER [†] (Snover et al., 2006)	-0.798	0.032	0.942	0.963	0.585	-0.137	-0.845
WER [†]	-0.816	-0.125	0.940	0.958	0.621	-0.153	-0.859
WMD0 [‡] (Chow et al., 2019)	-0.711	0.344	0.943	0.921	0.290	0.114	-0.352
YiSI-0 [‡] (Lo, 2019)	-0.714	0.074	0.991	0.946	0.540	-0.079	-0.663
YiSI-1 [‡] (Lo, 2019)	0.045	0.610	0.962	0.887	0.552	0.365	-0.067
YiSI-1_SRL [‡] (Lo, 2019)	0.081	0.580	0.959	0.874	0.560	0.342	-0.069
IBM1-MORPHEME* (Popović et al., 2011)	-0.643	0.065	—	—	-0.952	—	—
IBM1-POS4GRAM* (Popović et al., 2011)	-0.831	—	—	—	—	—	—
LASIM*	-0.855	—	—	—	—	-0.353	—
LP.1*	0.777	—	—	—	—	0.442	—
UNI* (Yankovskaya et al., 2019)	0.703	0.830	—	—	—	0.738	—
UNI+* (Yankovskaya et al., 2019)	0.796	0.791	—	—	—	0.777	—
YiSI-2* (Lo, 2019)	-0.809	0.780	-0.125	0.834	-0.362	-0.325	-0.889
YiSI-2_SRL* (Lo, 2019)	-0.749	—	—	—	—	—	-0.83
Prism-ref (This Work)	0.401	0.719	0.896	0.796	0.877	0.431	0.523
Prism-ref w/ ParaBank 2 (Contrastive)	0.957	0.788	0.871	0.759	0.939	0.625	0.899
LASER + LM (Contrastive)	0.957	0.768	0.867	0.870	0.615	0.596	0.733
Prism-src (This work)	0.502	0.802	0.608	0.558	-0.301	0.437	0.958
LM	0.973	0.754	0.619	0.498	-0.006	0.779	0.973
LASER	-0.458	0.718	0.984	0.926	0.662	0.262	-0.528
mBART (Contrastive)	-0.739	0.559	0.913	0.902	0.491	-0.103	-0.295

Table 17: WMT19 System-level results, to English for the top 4 systems (as judged by humans) for each language pair. n denotes number of MT systems. **Bold** denotes top scoring method and any other methods with whose 95% confidence interval overlaps with that of a top method. †:WMT19 Baseline (Ma et al., 2019) ‡:WMT19 Metric Submission (Ma et al., 2019) *:WMT19 QE-as-Metric Submission (Fonseca et al., 2019)

n	en-cs	en-de	en-fi	en-gu	en-kk	en-lt	en-ru	en-zh
	4	4	4	4	4	4	4	4
BEER [‡] (Stanojević and Sima'an, 2015)	0.872	-0.801	0.960	0.899	0.226	0.888	0.961	0.992
BERTSCORE (Zhang et al., 2019, 2020)	0.868	-0.722	0.859	0.922	0.288	0.955	0.953	0.982
BLEU [†] (Papineni et al., 2002)	0.930	-0.37	0.898	0.860	0.181	0.925	0.753	0.987
CDER [†] (Leusch et al., 2006)	0.946	-0.975	0.837	0.900	-0.011	0.880	0.917	0.986
CHARACTER [‡] (Wang et al., 2016)	0.828	-0.777	0.887	0.902	0.295	0.675	0.974	0.997
CHR [†] (Popović, 2015)	0.799	-0.590	0.936	0.926	0.277	0.901	0.954	0.987
CHR [†] + [†] (Popović, 2017)	0.816	-0.605	0.921	0.923	0.283	0.858	0.940	0.996
EED [‡] (Stanchev et al., 2019)	0.825	-0.552	0.939	0.913	0.267	0.921	0.961	0.997
ESIM [‡] (Chen et al., 2017; Mathur et al., 2019)	–	-0.796	0.957	–	0.418	0.997	0.986	0.987
HLEPORA.BASELINE [‡] (Han et al., 2012, 2013)	–	–	–	0.915	0.062	–	–	–
HLEPORB.BASELINE [‡] (Han et al., 2012, 2013)	–	–	–	0.915	0.062	0.821	–	–
NIST [†] (Doddington, 2002)	0.946	-0.233	0.971	0.893	0.082	0.988	0.724	0.979
PER [†]	0.916	-0.995	0.850	0.887	-0.260	0.390	0.911	0.980
SACREBLEU.BLEU [†] (Post, 2018)	0.970	-0.976	0.845	0.859	0.181	0.638	0.878	0.962
SACREBLEU.CHR [†] (Post, 2018)	0.907	-0.816	0.921	0.902	0.239	0.980	0.970	0.963
TER [†] (Snover et al., 2006)	0.969	-0.989	0.889	0.874	-0.060	0.988	0.895	0.984
WER [†]	0.973	-0.993	0.876	0.868	-0.058	0.973	0.894	0.987
YiSI-0 [‡] (Lo, 2019)	0.879	-0.796	0.975	0.920	0.196	0.787	0.940	0.982
YiSI-1 [‡] (Lo, 2019)	0.847	-0.220	0.976	0.917	0.342	0.838	0.963	0.990
YiSI-1_SRL [‡] (Lo, 2019)	–	-0.378	–	–	–	–	–	0.994
IBM1-MORPHEME* (Popović et al., 2011)	-0.771	-0.425	0.430	–	–	0.969	–	–
IBM1-POS4GRAM* (Popović et al., 2011)	–	-0.502	–	–	–	–	–	–
LASIM*	–	-0.914	–	–	–	–	0.223	–
LP.I*	–	-0.949	–	–	–	–	-0.407	–
UNI* (Yankovskaya et al., 2019)	0.587	-0.96	0.637	–	–	–	0.655	–
UNI+* (Yankovskaya et al., 2019)	–	–	–	–	–	–	0.644	–
USFD* (Ive et al., 2018)	–	-0.729	–	–	–	–	0.985	–
USFD-TL* (Ive et al., 2018)	–	-0.390	–	–	–	–	0.698	–
YiSI-2* (Lo, 2019)	0.793	-0.933	-0.991	-0.389	0.851	-0.504	0.075	0.983
YiSI-2_SRL* (Lo, 2019)	–	-0.915	–	–	–	–	–	0.991
Prism-ref (This Work)	0.952	0.278	0.886	0.863	0.693	0.862	0.975	0.966
LASER + LM (Contrastive)	0.961	0.377	0.903	0.509	0.605	0.743	0.962	0.985
Prism-src (This work)	0.973	-0.408	0.765	-0.703	0.833	-0.003	0.708	0.863
LM	0.833	0.425	0.763	-0.712	0.953	0.633	0.916	0.846
LASER	0.851	0.246	0.983	0.568	0.328	0.263	0.995	0.988
mBART (Contrastive)	0.936	-0.834	0.966	0.912	0.224	0.946	0.968	0.986

Table 18: WMT19 System-level results, from English for the top 4 systems (as judged by humans) for each language pair. n denotes number of MT systems. **Bold** denotes top scoring method and any other methods with whose 95% confidence interval overlaps with that of a top method. †:WMT19 Baseline (Ma et al., 2019) ‡:WMT19 Metric Submission (Ma et al., 2019) *:WMT19 QE-as-Metric Submission (Fonseca et al., 2019)

n	de-cs	de-fr	fr-de
	4	4	4
BEER [‡] (Stanojević and Sima'an, 2015)	0.961	0.590	0.978
BERTSCORE (Zhang et al., 2019, 2020)	0.976	0.707	0.973
BLEU [†] (Papineni et al., 2002)	0.812	0.495	0.983
CDER [†] (Leusch et al., 2006)	0.860	0.544	0.959
CHARACTER [‡] (Wang et al., 2016)	0.871	0.626	0.963
CHRF [†] (Popović, 2015)	0.920	0.531	0.952
CHRF+ [†] (Popović, 2017)	0.909	0.522	0.946
EED [‡] (Stanchev et al., 2019)	0.873	0.582	0.945
ESIM [‡] (Chen et al., 2017; Mathur et al., 2019)	0.977	0.702	0.991
HLEPORA.BASELINE [‡] (Han et al., 2012, 2013)	0.771	0.314	
HLEPORB.BASELINE [‡] (Han et al., 2012, 2013)	0.754	0.314	
NIST [†] (Doddington, 2002)	0.754	0.561	0.990
PER [†]	0.913	0.401	0.990
SACREBLEU.BLEU [†] (Post, 2018)	0.888	0.495	0.958
SACREBLEU.CHRF [†] (Post, 2018)	0.964	0.575	0.920
TER [†] (Snover et al., 2006)	0.999	0.541	0.989
WER [†]	0.997	0.566	0.991
YISI-0 [‡] (Lo, 2019)	0.838	0.655	0.961
YISI-1 [‡] (Lo, 2019)	0.967	0.677	0.967
YISI-1_SRL [‡] (Lo, 2019)	–	–	0.974
IBM1-MORPHEME* (Popović et al., 2011)	0.645	-0.885	-0.339
IBM1-POS4GRAM* (Popović et al., 2011)	–	-0.106	-0.33
YISI-2* (Lo, 2019)	0.368	0.209	-0.687
Prism-ref (This Work)	0.968	0.648	0.998
LASER + LM (Contrastive)	0.947	0.774	0.975
Prism-src (This work)	0.903	0.600	0.181
LM	0.336	0.770	-0.903
LASER	0.552	0.713	0.953
mBART (Contrastive)	0.806	0.615	0.972

Table 19: WMT19 System-level results, non-English for the top 4 systems (as judged by humans) for each language pair. n denotes number of MT systems. **Bold** denotes top scoring method and any other methods with whose 95% confidence interval overlaps with that of a top method. †:WMT19 Baseline (Ma et al., 2019) ‡:WMT19 Metric Submission (Ma et al., 2019) *:WMT19 QE-as-Metric Submission (Fonseca et al., 2019)

G WMT 2019 Metric and QE as Metric System-Level Results

Table 20, Table 21, and Table 22, show system-level results, for metrics (excludes QE as metric) for language pairs into, out of, and not including English, for the WMT 2019 MT metrics shared task, along with all baselines and submitted systems.

Table 23, Table 24, and Table 25, show system-level results, for QE as metric, for language pairs into, out of, and not including English, for the WMT 2019 MT metrics shared task, along with all baselines and submitted systems.

n	de-en	fi-en	gu-en	kk-en	lt-en	ru-en	zh-en
	16	12	11	11	11	14	15
BEER [‡] (Stanojević and Sima'an, 2015)	0.906	0.993	0.952	0.986	0.947	0.915	0.942
BERTR [‡] (Mathur et al., 2019)	0.926	0.984	0.938	0.990	0.948	0.971	0.974
BERTSCORE (Zhang et al., 2019, 2020)	0.949	0.987	0.981	0.980	0.962	0.921	0.983
BLEU [†] (Papineni et al., 2002)	0.849	0.982	0.834	0.946	0.961	0.879	0.899
BLEURT (Sellam et al., 2020)	0.940	0.978	0.878	0.993	0.991	0.977	0.984
CDER [†] (Leusch et al., 2006)	0.890	0.988	0.876	0.967	0.975	0.892	0.917
CHARACTER [‡] (Wang et al., 2016)	0.898	0.990	0.922	0.953	0.955	0.923	0.943
CHRF [†] (Popović, 2015)	0.917	0.992	0.955	0.978	0.940	0.945	0.956
CHRF+ [†] (Popović, 2017)	0.916	0.992	0.947	0.976	0.940	0.945	0.956
EED [‡] (Stanchev et al., 2019)	0.903	0.994	0.976	0.980	0.929	0.950	0.949
ESIM [‡] (Chen et al., 2017; Mathur et al., 2019)	0.941	0.971	0.885	0.986	0.989	0.968	0.988
HLEPORA.BASELINE [‡] (Han et al., 2012, 2013)	–	–	–	0.975	–	–	0.947
HLEPORB.BASELINE [‡] (Han et al., 2012, 2013)	–	–	–	0.975	0.906	–	0.947
METEOR++_2.0(SYNTAX) [‡] (Guo and Hu, 2019)	0.887	0.995	0.909	0.974	0.928	0.950	0.948
METEOR++_2.0(SYNTAX+COPY) [‡] (Guo and Hu, 2019)	0.896	0.995	0.900	0.971	0.927	0.952	0.952
NIST [†] (Doddington, 2002)	0.813	0.986	0.930	0.942	0.944	0.925	0.921
PER [†]	0.883	0.991	0.910	0.737	0.947	0.922	0.952
PREP [‡] (Yoshimura et al., 2019)	0.575	0.614	0.773	0.776	0.494	0.782	0.592
SACREBLEU.BLEU [†] (Post, 2018)	0.813	0.985	0.834	0.946	0.955	0.873	0.903
SACREBLEU.CHRF [†] (Post, 2018)	0.910	0.990	0.952	0.969	0.935	0.919	0.955
TER [†] (Snover et al., 2006)	0.874	0.984	0.890	0.799	0.960	0.917	0.840
WER [†]	0.863	0.983	0.861	0.793	0.961	0.911	0.820
WMDO [‡] (Chow et al., 2019)	0.872	0.987	0.983	0.998	0.900	0.942	0.943
YISI-0 [‡] (Lo, 2019)	0.902	0.993	0.993	0.991	0.927	0.958	0.937
YISI-1 [‡] (Lo, 2019)	0.949	0.989	0.924	0.994	0.981	0.979	0.979
YISI-1.SRL [‡] (Lo, 2019)	0.950	0.989	0.918	0.994	0.983	0.978	0.977
Prism-ref (This Work)	0.954	0.983	0.764	0.998	0.995	0.914	0.992
Prism-ref w/ ParaBank 2 (Contrastive)	0.949	0.979	0.925	0.993	0.981	0.948	0.994
LASER + LM (Contrastive)	0.938	0.974	0.974	0.997	0.996	0.940	0.988
mBART (Contrastive)	0.906	0.991	0.949	0.974	0.917	0.880	0.956

Table 20: WMT19 System-level results, to English. n denotes number of MT systems. **Bold** denotes top scoring method and any other methods with whose 95% confidence interval overlaps with that of a top method. †:WMT19 Baseline (Ma et al., 2019) ‡:WMT19 Metric Submission (Ma et al., 2019)

n	en-cs 11	en-de 22	en-fi 12	en-gu 11	en-kk 11	en-lt 12	en-ru 12	en-zh 12
BEER [‡] (Stanojević and Sima'an, 2015)	0.990	0.983	0.989	0.829	0.971	0.982	0.977	0.803
BERTSCORE (Zhang et al., 2019, 2020)	0.981	0.990	0.970	0.922	0.981	0.978	0.989	0.925
BLEU [†] (Papineni et al., 2002)	0.897	0.921	0.969	0.737	0.852	0.989	0.986	0.901
CDER [†] (Leusch et al., 2006)	0.985	0.973	0.978	0.840	0.927	0.985	0.993	0.905
CHARACTER [‡] (Wang et al., 2016)	0.994	0.986	0.968	0.910	0.936	0.954	0.985	0.862
CHRF [†] (Popović, 2015)	0.990	0.979	0.986	0.841	0.972	0.981	0.943	0.880
CHRF+ [†] (Popović, 2017)	0.991	0.981	0.986	0.848	0.974	0.982	0.950	0.879
EED [‡] (Stanchev et al., 2019)	0.993	0.985	0.987	0.897	0.979	0.975	0.967	0.856
ESIM [‡] (Chen et al., 2017; Mathur et al., 2019)	–	0.991	0.957	–	0.980	0.989	0.989	0.931
HLEPORA_BASELINE [‡] (Han et al., 2012, 2013)	–	–	–	0.841	0.968	–	–	–
HLEPORB_BASELINE [‡] (Han et al., 2012, 2013)	–	–	–	0.841	0.968	0.980	–	–
NIST [†] (Doddington, 2002)	0.896	0.321	0.971	0.786	0.930	0.993	0.988	0.884
PER [†]	0.976	0.970	0.982	0.839	0.921	0.985	0.981	0.895
SACREBLEU.BLEU [†] (Post, 2018)	0.994	0.969	0.966	0.736	0.852	0.986	0.977	0.801
SACREBLEU.CHRF [†] (Post, 2018)	0.983	0.976	0.980	0.841	0.967	0.966	0.985	0.796
TER [†] (Snover et al., 2006)	0.980	0.969	0.981	0.865	0.940	0.994	0.995	0.856
WER [†]	0.982	0.966	0.980	0.861	0.939	0.991	0.994	0.875
YISI-0 [‡] (Lo, 2019)	0.992	0.985	0.987	0.863	0.974	0.974	0.953	0.861
YISI-1 [‡] (Lo, 2019)	0.962	0.991	0.971	0.909	0.985	0.963	0.992	0.951
YISI-1_SRL [‡] (Lo, 2019)	–	0.991	–	–	–	–	–	0.948
Prism-ref (This Work)	0.958	0.988	0.949	0.624	0.978	0.937	0.918	0.898
LASER + LM (Contrastive)	0.962	0.989	0.957	0.775	0.969	0.958	0.987	0.950
mBART (Contrastive)	0.987	0.988	0.982	0.917	0.981	0.965	0.978	0.866

Table 21: WMT19 System-level results, from English. n denotes number of MT systems. **Bold** denotes top scoring method and any other methods with whose 95% confidence interval overlaps with that of a top method. †:WMT19 Baseline (Ma et al., 2019) ‡:WMT19 Metric Submission (Ma et al., 2019)

n	de-cs 11	de-fr 11	fr-de 10
BEER [‡] (Stanojević and Sima'an, 2015)	0.978	0.941	0.848
BERTSCORE (Zhang et al., 2019, 2020)	0.969	0.971	0.899
BLEU [†] (Papineni et al., 2002)	0.941	0.891	0.864
CDER [†] (Leusch et al., 2006)	0.864	0.949	0.852
CHARACTER [‡] (Wang et al., 2016)	0.965	0.928	0.849
CHRF [†] (Popović, 2015)	0.974	0.931	0.864
CHRF+ [†] (Popović, 2017)	0.972	0.936	0.848
EED [‡] (Stanchev et al., 2019)	0.982	0.940	0.851
ESIM [‡] (Chen et al., 2017; Mathur et al., 2019)	0.980	0.950	0.942
HLEPORA_BASELINE [‡] (Han et al., 2012, 2013)	0.941	0.814	–
HLEPORB_BASELINE [‡] (Han et al., 2012, 2013)	0.959	0.814	0.862
NIST [†] (Doddington, 2002)	0.954	0.916	0.899
PER [†]	0.875	0.857	0.869
SACREBLEU.BLEU [†] (Post, 2018)	0.869	0.891	0.882
SACREBLEU.CHRF [†] (Post, 2018)	0.975	0.952	0.895
TER [†] (Snover et al., 2006)	0.890	0.956	0.894
WER [†]	0.872	0.956	0.820
YISI-0 [‡] (Lo, 2019)	0.978	0.952	0.908
YISI-1 [‡] (Lo, 2019)	0.973	0.969	0.912
Prism-ref (This Work)	0.976	0.936	0.911
LASER + LM (Contrastive)	0.990	0.935	0.924
mBART (Contrastive)	0.964	0.944	0.874

Table 22: WMT19 System-level results, non-English. n denotes number of MT systems. **Bold** denotes top scoring method and any other methods with whose 95% confidence interval overlaps with that of a top method. †:WMT19 Baseline (Ma et al., 2019) ‡:WMT19 Metric Submission (Ma et al., 2019)

	de-en	fi-en	gu-en	kk-en	lt-en	ru-en	zh-en
n	16	12	11	11	11	14	15
IBM1-MORPHEME* (Popović et al., 2011)	-0.345	0.740	–	–	0.487	–	–
IBM1-POS4GRAM* (Popović et al., 2011)	-0.339	–	–	–	–	–	–
LASIM*	0.247	–	–	–	–	-0.310	–
LP.1*	-0.474	–	–	–	–	-0.488	–
UNI* (Yankovskaya et al., 2019)	0.846	0.930	–	–	–	0.805	–
UNI+* (Yankovskaya et al., 2019)	0.850	0.924	–	–	–	0.808	–
Y1SI-2* (Lo, 2019)	0.796	0.642	-0.566	-0.324	0.442	-0.339	0.940
Y1SI-2_SRL* (Lo, 2019)	0.804	–	–	–	–	–	0.947
Prism-src (This work)	0.890	0.941	0.171	0.961	0.989	0.845	0.971

Table 23: WMT19 System-level results, QE as a metric, to English. n denotes number of MT systems. **Bold** denotes top scoring method and any other methods with whose 95% confidence interval overlaps with that of a top method. *:WMT19 QE-as-Metric Submission (Fonseca et al., 2019)

	en-cs	en-de	en-fi	en-gu	en-kk	en-lt	en-ru	en-zh
n	11	22	12	11	11	12	12	12
IBM1-MORPHEME* (Popović et al., 2011)	-0.871	0.870	0.084	–	–	-0.81	–	–
IBM1-POS4GRAM* (Popović et al., 2011)	–	0.393	–	–	–	–	–	–
LASIM*	–	0.871	–	–	–	–	-0.823	–
LP.1*	–	-0.569	–	–	–	–	-0.661	–
UNI* (Yankovskaya et al., 2019)	0.028	0.841	0.907	–	–	–	0.919	–
UNI+* (Yankovskaya et al., 2019)	–	–	–	–	–	–	0.918	–
USFD* (Ive et al., 2018)	–	-0.224	–	–	–	–	0.857	–
USFD-TL* (Ive et al., 2018)	–	-0.091	–	–	–	–	0.771	–
Y1SI-2* (Lo, 2019)	0.324	0.924	0.696	0.314	0.339	0.055	-0.766	-0.097
Y1SI-2_SRL* (Lo, 2019)	–	0.936	–	–	–	–	–	-0.118
Prism-src (This work)	0.865	0.976	0.933	0.444	0.959	0.908	0.822	0.793

Table 24: WMT19 System-level results, QE as a metric, from English. n denotes number of MT systems. **Bold** denotes top scoring method and any other methods with whose 95% confidence interval overlaps with that of a top method. *:WMT19 QE-as-Metric Submission (Fonseca et al., 2019)

	de-cs	de-fr	fr-de
n	11	11	10
IBM1-MORPHEME* (Popović et al., 2011)	0.355	-0.509	-0.625
IBM1-POS4GRAM* (Popović et al., 2011)	–	0.085	-0.478
Y1SI-2* (Lo, 2019)	0.606	0.721	-0.53
Prism-src (This work)	0.973	0.889	0.739

Table 25: WMT19 System-level results, QE as a metric, non-English. n denotes number of MT systems. **Bold** denotes top scoring method and any other methods with whose 95% confidence interval overlaps with that of a top method. *:WMT19 QE-as-Metric Submission (Fonseca et al., 2019)