

# Automatic Generation of Web Censorship Probe Lists

Jenny Tang  
Carnegie Mellon University  
jennytang@cmu.edu

Léo Alvarez  
EPFL and CMU  
leo.alvarez@alumni.epfl.ch

Arjun Brar  
Carnegie Mellon University  
abrar@cmu.edu

Nguyen Phong Hoang  
University of British Columbia  
nphoang@cs.ubc.ca

Nicolas Christin  
Carnegie Mellon University  
nicolasc@cmu.edu

## ABSTRACT

Domain probe lists—used to determine which URLs to probe for Web censorship—play a critical role in Internet censorship measurement studies. Indeed, the size and accuracy of the domain probe list limits the set of censored pages that can be detected; inaccurate lists can lead to an incomplete view of the censorship landscape or biased results. Previous efforts to generate domain probe lists have been mostly manual or crowdsourced. This approach is time-consuming, prone to errors, and does not scale well to the ever-changing censorship landscape.

In this paper, we explore methods for automatically generating probe lists that are both comprehensive and up-to-date for Web censorship measurement. We start from an initial set of 139,957 unique URLs from various existing test lists consisting of pages from a variety of languages to generate new candidate pages. By analyzing content from these URLs (i.e., performing topic and keyword extraction), expanding these topics, and using them as a feed to search engines, our method produces 119,255 new URLs across 35,147 domains. We then test the new candidate pages by attempting to access each URL from servers in eleven different global locations over a span of four months to check for their connectivity and potential signs of censorship. Our measurements reveal that our method discovered over 1,400 domains—not present in the original dataset—we suspect to be blocked. In short, automatically updating probe lists is possible, and can help further automate censorship measurements at scale.

## KEYWORDS

Web Censorship, Automated URL Generation, Measurements

## 1 INTRODUCTION

The Web, despite its facade of open and unrestricted access, is subject to various forms of control and censorship. As extensively documented over the years [39, 41], many entities—including governments [28, 46, 55, 65, 70] and private interests [40, 71]—control the free flow of information and knowledge in different ways [47], ranging from blocking access to web pages via poisoning DNS resolutions [26, 42, 55, 56, 67] and TCP/IP packet filtering [35, 53,

54, 66, 77, 82], to injecting block pages [54, 59], to removing information from the Internet [60, 74], or spreading competing (false) narratives [51, 58, 61], among others. This work focuses on the detection of Internet censorship, specifically the blocking of web pages, which presents both ethical and technical challenges.

Identifying blocked pages is not straightforward due to the massive scale of the Internet and the dynamic nature of online content. As of 2023, there are over 359 million domain name registrations [7], making comprehensive daily monitoring across all locations impractical. Current approaches, including crowdsourced probe lists, are invaluable but come with limitations. They often reflect the biases and regional focus of contributors, potentially missing censorship of certain topics while requiring significant manual effort to maintain.

Some examples include the Berkman Klein Center, which used to maintain a list of URLs intended to estimate the (in)accessibility of different types of content from different countries [30]. The Citizen Lab provides test lists [34] curated by regional volunteers to be relevant to specific countries/regions. The Citizen Lab test list is widely used by several global censorship measurement projects, including the Open Observatory of Network Interference (OONI) [43], the Information Controls Lab (ICLab) [63], and Censored Planet [69].

In this work, we aim to automate the process of updating probe lists, to better keep pace with the ever-evolving landscape of online censorship. Despite efforts to maintain and continuously update existing lists, they require large amounts of effort by human volunteers and researchers. Sometimes, well-meaning users may contribute websites that they erroneously believe as being censored, but that are in fact inaccessible due to human error or transient network issues. Removing these contributions would take further resources that may be better spent on other tasks. Furthermore, as news cycles continue and change, what may be blocked one day may be accessible the next. Therefore, if probe lists are not continuously updated, they may become outdated and no longer provide useful information, or worse, provide misleading information and take away resources from measuring other potentially blocked pages.

Building on existing lists, we develop a method to discover new URLs and domains that are potentially blocked, without needing manual curation, which requires time, effort, and poses potential risks. This not only allows us to keep up to date with global trends on Internet censorship with automatically updated lists, it also reduces possible risk to human volunteers, by relying less on actual people probing potentially sensitive information.

We take an original set (drawn from publicly available sources [34, 79, 80]) of 139,957 unique URLs from 106,878 unique domains as

This work is licensed under the Creative Commons Attribution 4.0 International License. To view a copy of this license visit <https://creativecommons.org/licenses/by/4.0/> or send a letter to Creative Commons, PO Box 1866, Mountain View, CA 94042, USA.  
*Proceedings on Privacy Enhancing Technologies* 2024(4), 44–60  
© 2024 Copyright held by the owner/author(s).  
<https://doi.org/10.56553/popets-2024-0106>



our starting point. We will subsequently refer to these initial lists of pages as our “source list.” Unsurprisingly, given how old some of the components of the source list are, many pages appear to be down, i.e., they can never be reached from any location, including places (such as the United States) not known for censoring much data. We thus filter these down to 51,313 live URLs, and use these to generate a probe list containing 119,255 candidate URLs for testing (§3.1).

Specifically, using the URLs from the source list, we devise a new method of generating potentially censored URLs (§3.2). While the high level idea is simple—extract topics and keywords from pages that were censored, and feed them into a search engine to get more examples to test for—its implementation is complex, and requires us to rely on a rather complicated natural language processing pipeline, due to the impossibility of making any assumption on the content of the pages being censored (e.g., they may not be in English, they may include boilerplate that needs to be removed prior to processing, etc.) That pipeline includes language identification, page tokenization and translation, and topic and keyword assignment. To avoid snowballing biases, we further conduct topic expansion using large language models and Google Trends, and eventually, use web search on this expanded set of topics to discover potentially blocked pages.

The resulting 119,255 unique URLs fall across 35,147 pay-level domains.<sup>1</sup> Of these, 71,960 URLs from 32,543 domains did not appear in our source lists (even as dead links). Therefore, the majority of domains our system outputs are new, though these domains may not be censored.

To rigorously evaluate our generated probe list, we conducted systematic testing across 11 strategically chosen locations spanning North America, Europe, and Asia over a five-month period between November 2023 and March 2024 (§4). From each vantage point, we performed up to 50 iterations of testing, recording the number of URLs that were accessible, inaccessible, or returned errors. These results were then compared against a baseline aggregated across five vantage points with high Internet freedom scores, which we considered our expected benchmark for accessibility and failures. To obtain more comprehensive and granular insights, we further validated our findings using OONI Probe (§5.4), renowned for its robust censorship detection capabilities.

Compared to traditional crowdsourcing approaches, our automated system demonstrates the ability to generate new URLs and domains at lower costs and no risks to end users. Notably, our method enabled the discovery of pages from domains that were not present in our original source lists, expanding the scope of our investigation beyond known censored content (§5). A particularly compelling finding emerged in our analysis of China. Our system is highly effective at identifying new domains that are blocked in this country, with over 1,000 previously undiscovered domains—absent from our source lists—consistently inaccessible from these locations. This discovery showcases the efficacy of our automated approach in detecting censorship patterns that may have been overlooked by traditional manual curation processes.

Furthermore, our analysis revealed differences between locations in the blocking methods employed to restrict access to potentially sensitive pages. Notably, together with DNS and HTTP blocking,

our results also indicated that IP-based blocking also impacts a number of domains in China. Concurrently, we also identified regional similarities in the pages that are censored across certain geographies.

## 2 BACKGROUND AND MOTIVATION

As of 2024, the World Wide Web accommodates billions of users, facilitating the sharing and access of information across 1.09 billion websites [24]. However, only about 18% of these websites, equating to 200 million, are actively maintained and frequented. On average, a new website is created and goes live approximately every 3 seconds. Testing the status of a website, especially to determine if it is censored, involves attempting to access the site by sending a request to the server hosting the content from a specific location, and then analyzing the resulting response and behavior. Considering the impracticality of testing the entire Web, it is crucial to develop a strategy to effectively narrow down the scope of the search. In this section, we give an overview of the existing efforts on Internet censorship measurement, the challenges they face, and how they have motivated us to conduct this study.

### 2.1 Global Censorship Measurement Platforms

To shed light on the state of Internet censorship, several projects have been launched to measure and analyze Web accessibility, including OONI [43], ICLab [63], and Censored Planet [69].

Relying on a network of volunteers, OONI [43] operates through user-installed probe software, gathering data on users’ web access attempts. Their analysis focuses on identifying likely censored links. To eliminate risks associated with volunteer-based measurements, ICLab [63] relies on commercial Virtual Private Network (VPN) services to measure connectivity disruptions. With a different approach, Censored Planet [69] employs various remote measurement techniques to infer network censorship by making use of public servers such as open DNS resolvers and echo servers.

### 2.2 Probe List Curation

Despite their differences in measurement techniques and vantage points, all three platforms share a common reliance on the Citizen Lab’s test lists [34] as the primary input into their measurement pipelines to identify potential censored websites. This is because it is infeasible to test every website on the Web with adequate frequency. Therefore, to narrow down the scope of censorship detection, the Citizen Lab test lists are manually curated by volunteers with some local knowledge of what websites are prone to censorship or have already been confirmed censored.

In addition, there have been also other efforts to build probe lists, such as the OpenNet Initiative (ONI) [1] and Herdict by the Berkman Klein Center [30]. Unfortunately, these projects are no longer active at the time of writing.

### 2.3 Probe List Generation

Prior efforts such as FilteredWeb [37] and Hounsel et al. [57] have also explored approaches to generate probe lists. These works discover blocked URLs through automated methods of analyzing the contents of web pages and finding pages with similar topics by using these topics and keywords as inputs to search engines.

<sup>1</sup>We determine pay-level domains (PLDs) using the public suffix list [62].

However, our approach goes beyond finding only topics associated with previously censored pages by extending the search space of potentially censored topics by leveraging Google Trends and language models like GPT. This allows us to detect pages that may not be directly related to the content of existing block lists, enabling the discovery of other similar and potentially sensitive topics.

Furthermore, while both FilteredWeb and Hounsel et al.’s work focused regionally on China, our study attempts to provide a more global perspective on Internet censorship. We additionally conduct repeated measurements over time and utilizing the OONI Probe [23], a widely used censorship detection tool by the anti-censorship community. Thus, our evaluation of the generated probe list enables more fine-grained detection of censorship due to different blocking mechanisms, including DNS, TCP/IP, and HTTP. This comprehensive approach provides higher confidence that the identified blocked domains are indeed censored, rather than experiencing transient errors.

## 2.4 Motivation

These observations show that prior initiatives in constructing probe lists often heavily rely on individual contributions and manual efforts, or are specific to certain regions. These curated lists also can become outdated quickly and are not refreshed at a pace matching the dynamic nature of web content and changes in censorship. In fact, an investigation by Weinberg et al. [79] found that websites hosting sensitive content are often short-lived, indicating the dynamic and volatile nature of these lists. This volatility raises questions about the completeness and reliability of the data over time.

These previous challenges have motivated us to try to bridge this gap by devising a method to generate a probe list with broad thematic coverage while minimizing manual efforts to maintain the list. Updating probe lists is non-trivial, and currently requires large quantities of manual hours and volunteers. We explore ways to use language models to reduce some of the onus on human volunteers and researchers, while maintaining the ability to discover relevant pages with greater likelihood to be censored. Ultimately, we aim to provide censorship monitoring tools with a solution to generate probe lists and narrow the entire web to a selection of websites that are more likely to be targeted by censoring systems.

## 3 GENERATING THE PROBE LIST

We now document how we build our original source list, before describing how we use this list to produce more candidate pages, i.e., our new probe list.

### 3.1 Source List and Input Sanitization

We begin with a set of known blocked pages, sourced from lists used in prior work by Weinberg et al. [79], the Wikileaks’ Internet Censorship page [80], and the Citizen Lab test lists [34]. Table 1 details the exact composition of these lists. Most of the lists are static (i.e., not updated regularly), old, and—as noted by Weinberg et al.—already contained a lot of broken links in 2017 [79]. We expect these lists to be even more stale in 2023. Nonetheless, they can still serve to seed our probe list generation. Weinberg et al. [79] distinguish between lists that contain mostly pornographic material

**Table 1: Composition of the source list.**

| Group                   | List name      | Source               | Number of URLs |
|-------------------------|----------------|----------------------|----------------|
| <i>BlackPink</i>        | Australia 2009 | Wikileaks            | 1,168          |
| <i>BlackPink</i>        | Denmark2008    | Wikileaks            | 3,862          |
| <i>BlackPink</i>        | Finland2009    | Wikileaks            | 797            |
| <i>BlackPink</i>        | Norway2009     | Wikileaks            | 3,517          |
| <i>BlackPink</i>        | Thailand2007   | Wikileaks            | 13,428         |
| <i>BlackPink</i>        | Thailand2008   | Wikileaks            | 1,309          |
| <i>BlackPink</i>        | Thailand2009   | Wikileaks            | 398            |
| <i>BlackPink</i>        | UK2015         | Weinberg et al. [79] | 87,598         |
| <i>CitizenLab</i>       | CitizenLab     | Citizen Lab [34]     | 37,570         |
| Total (with duplicates) |                |                      | 150,005        |
| <b>Total (unique)</b>   |                |                      | <b>139,957</b> |

(“pinklists”) and those that do not (“blacklists”). In the present study, this distinction is less relevant, and we combine these corpora under a common “BlackPink” header,<sup>2</sup> primarily to distinguish them from the Citizen Lab list [34], which is actively maintained and updated on a regular basis by the OONI community and the Citizen Lab. We fetched our data from the list on March 31, 2023, from both global and country-specific test lists, totaling 37,750 URLs.

We combine all the lists and remove duplicate entries, resulting in a total of 139,957 unique URLs which form the basis of our generations of new probe list. We will refer to this corpus as the “source list,” i.e., the input to our probe list generation pipeline.

**Removing dead pages.** Given the crowdsourced nature of some of our data, we use a multi-step process to eliminate URLs that are inactive or composed of irrelevant information (e.g., parked domains). We issue a request to each URL and classify it as dead if the response:

- results in invalid redirections (invalid URL formats, infinite or excessive redirections, redirection to a domain identified as a domain seller, redirection to a domain in a manually handcrafted list as suspicious).
- returns a 4XX error code that was not among 4{03, 04, 05, 06, 08, 12, 14, 15, 23, 29}.
- returns a 5XX error code that was not among 5{00, 01, 02, 03, 04, 05, 08, 11, 20, 91}.

**Removing content-free pages.** We are left with a set of 84,451 URLs which we then test further with Selenium WebDriver to determine whether the corresponding pages are active and display meaningful content. To do so, we send HEAD requests to each of these pages and extract the page content using the Trafilatura library for analysis [29]. Trafilatura allows us in particular to extract the main body of a page, removing recurring elements such as menu bars, links, blog rolls, social media buttons, etc.

We then use regular expressions on this main body to identify pages that do not contain actual content and remove the corresponding URLs from our list. Examples include YouTube pages with missing or taken down videos, or error pages. While these remain accessible, the content of these pages does not provide us any useful information for our pipeline to generate candidate test

<sup>2</sup>Not to be construed as a hidden K-pop reference.

pages. Following Weinberg et al. [79]’s lead, we also use regular expressions developed by Szurdi et al. to remove parked domains [75]. This step results in 18,911 URLs being removed from the source list, leaving us with 65,540 URLs for further analysis.

Finally, we test whether the page contains at least 300 characters of text for liveness and language detection. Pages with fewer than 300 characters often contain minimal or no meaningful content at all, and are likely to be inactive. It is very rare that websites have no text at all, as even web pages that are characterized by images and videos often contain text in the form of video descriptions, comments, and even alt-tags. Furthermore, extracting semantic meaning (which we need to do in the next stages of our pipeline) of extremely short text snippets is challenging as such short snippets are also unlikely to contain enough information to accurately identify the language of the page. In short, pages with fewer than 300 characters<sup>3</sup> often do not contain enough information to be useful for our pipeline.

This multi-step process results in a final set of 51,313 URLs that we feed into our pipeline to generate new candidate pages. The small number of URLs (36.66% of our original source list) successfully processed underscores the amount of manual effort required to maintain probe lists and the importance of keeping them up to date and relevant.

## 3.2 Expanding the source list into the probe list

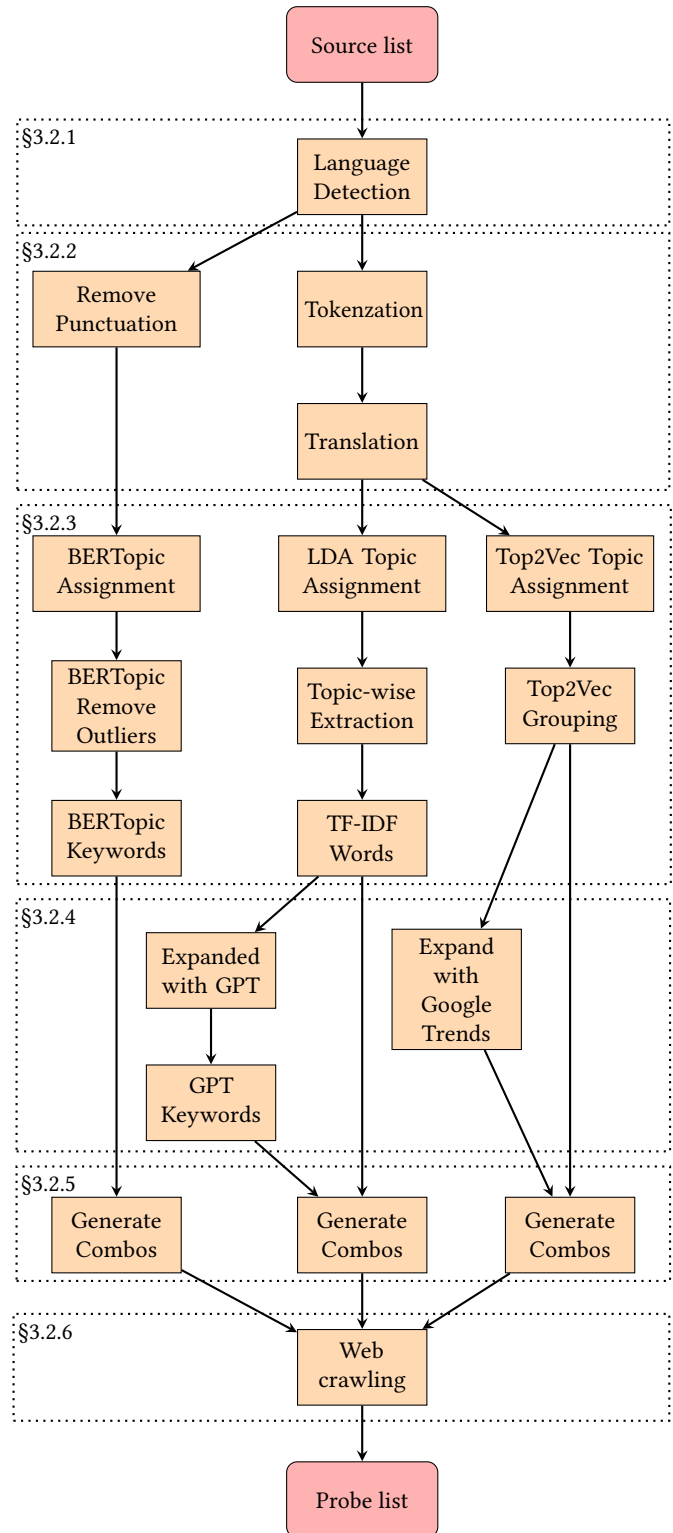
Figure 1 provides a complete overview of how the probe list is generated. We start from pages in the sanitized source list, i.e., the 51,313 URLs that we know are reachable and with actual—presumably meaningful—content. We then perform the following steps, on the text content on the page.

**3.2.1 Language detection.** Many pages we examine are not in English. To detect the language of the page content, which is necessary for topic detection and for translation, we first use Lingua [68] in high-accuracy mode. For languages Lingua does not support (15.22% of the total number of pages), we rely on Google’s CLD3 [48] as a fallback. Eventually, we manage to identify the language of 99.29% of the pages. Our corpus spans 103 different languages.

**3.2.2 Text processing.** We then prepare the text to perform topic assignment. As we will discuss later, we will be using three different techniques for topic assignment in parallel—BERTopic [50], Latent Dirichlet Allocation (LDA, [31]), and Top2Vec [25], which require slightly different preparations.

BERTopic works with multilingual input and does not need translation, but requires language identification as part of its parameters. BERTopic supports 55 languages; page content in unsupported languages is not passed to that part of the pipeline—we instead only rely on the other topic assignment techniques for these pages. BERTopic performs best with sentences rather than individual words, so we do not use standard tokenization techniques to, e.g., remove stop words. We remove punctuation, emojis (using the `emojilib` library [33]), leading and trailing white space, as well as Unicode characters that represent symbols.

<sup>3</sup>We arrived at 300 characters from the original length of a tweet—280 characters—that we rounded up to account for the lack of URL shortening.



**Figure 1: Flowchart of the URL generation process. The dashed boxes correspond to different subsections in the body of the text.**

LDA and Top2Vec require similar preparation: tokenization and translation. Tokenization removes punctuation, stop words, and breaks text into smaller “core forms” or tokens. Utilizing open-source libraries and corpora that are widely used in the linguistics community [2, 8, 16, 19, 21, 22], we could identify and remove stop words for 58 languages. Furthermore, we also use other libraries [3, 5, 10, 12–14, 18, 20] to tokenize data for languages that do not use spaces or punctuation to separate between words, such as Chinese, Arabic, or Japanese. We then translate the tokens into English. We first run Lingua to filter out tokens that are already in English (e.g., loan words), and translate the rest using the Google Translate API [17]. From this, we get a bag-of-words representation of the web page content.

**3.2.3 Topic Assignment and Keyword Extraction.** We next map the data representations of the page to a topic that best describes the content of the page, and extract salient keywords that characterize this topic. As noted above, we use three different methods in parallel for this task; this allows us to ultimately generate as many candidate pages as possible.

**BERTopic.** BERTopic produces a topic and a set of keywords associated with it. We use the cTFIDF model [4], which is similar to the traditional term-frequency/inverse-document-frequency (TF-IDF) model, but operates at a topic/cluster level instead of the document level [4]. Through manual tuning, we discover that the best parameters are setting the number of words for each topic to 30, and the minimum size of a cluster to 20 documents. This yields 257 topic clusters, with an average of 194 documents per group.

**Latent Dirichlet Allocation.** Building upon the pre-trained LDA model by Weinberg et al. [79], we stem the tokens (i.e., reduce them to their root) with the Porter stemmer from NLTK [15] and discard documents with fewer than four words. This yields 53 potential topics (out of the 64 topics originally identified by Weinberg et al. [79]). We then extract keywords from the documents, using the TF-IDF library [72]. This produces a list of keywords per topic, and their associated TF-IDF scores.

**Top2Vec.** Top2Vec [25] is a third topic assignment mechanism we use to produce keywords complementary to those obtained with LDA and BERTopic. Top2Vec produces 232 distinct topics, with an average of 210 documents per group. Top2Vec does not require additional keyword extraction through TF-IDF, but produces both a topic assignment and a list of relevant keywords instead. While BERTopic uses different vector spaces for topic assignments and keywords, Top2Vec uses a single vector space [11].

**3.2.4 Topic Expansion.** Our method for generating new URLs is similar to snowball sampling—starting from a seed and expanding from it. Snowball sampling, however, might lead to biases. In particular, while it is effective at producing new candidate pages on topics observed before, snowball sampling is not suited to discovering new topics; this is particularly problematic for us, since censorship evolves over time, frequently in response to shifting dynamics in news events. We mitigate this issue in two ways.

**Asking ChatGPT for suggestions.** Large language models, such as ChatGPT, use large text corpora to attempt to answer questions from users. As such, they are well suited to suggest related topics from an existing corpus. We expand topics found by our LDA algorithm using ChatGPT, specifically, the gpt-3.5-turbo version.

We describe in Appendix A.1 the prompt we use, to ask ChatGPT how to expand the set of topics coming from LDA analysis.

**Using Google Trends as a complementary source.** The source list relies on fairly aged inputs—some test lists dates back to 2007. To ensure that our probe list have some current inputs, we complement the topics found with Top2Vec with related input from Google Trends [9]. Specifically, for each topic produced by Top2Vec, we extract the two most relevant keywords (using cosine similarity to the topic) and feed them into Google Trends to obtain related keywords over the preceding five years before May 2023. Google Trends responds with “Top” trends—i.e., those that have consistently ranked high, and “rising” trends—i.e., trends that are becoming more popular at the time the query is made. We limit our search to a maximum of 40 new keywords per topic; we get 36 on average.

**3.2.5 Generating Search Strings: Keyword Grouping.** The next step, common to the whole pipeline, is to generate combinations of keywords that will eventually be fed into a search engine to discover new pages of interest. We manually experimented and discovered that using four to nine keywords was optimal. Four or fewer keywords led to very generic, mostly irrelevant results; nine or more keywords was too specific and yielded no result. Furthermore, keyword order in the search matters, returning different results, and so we try various different permutations.

We also discovered that “tiering” improves search results. Specifically, we divide the keywords associated with each topic into four tiers, in decreasing order of semantic affinity to the topic. For the desired number of keywords (between four and nine, as discussed above), we then draw from each tier probabilistically: we select tier-1 keywords with a probability of 0.25 to 0.5; tier 2 with a probability of 0.05 to 0.4; tier 3 with a probability of 0.05 to 0.2; the remaining is filled with tier-4 keywords if necessary. The idea is to favor slightly more representative keywords, which ensures diverse inputs. To that effect, we also limit ourselves to at most three tier-1 keywords. Thus, higher tier (more relevant) keywords appear more frequently in the search combinations, while maintaining a random factor using keywords from other tiers.

**3.2.6 Google Search Web Crawling.** The keyword grouping process results in 14,450 query combinations. We feed those into the Google Search API [6] to obtain URLs to include in our probe list related to these topics. For each keyword combination, the API returns a default of 10 results. When results cannot be found or appear rare, Google sometimes returns a “spell-corrected” query, which we recursively call once to maximize the number of URLs generated. When a search string yields no result and no spell-corrected query, we reduce the keyword combination size by 20% and retry until we obtain search results. The process generates a total of 160,981 URLs, which after removing duplicates, reduces to a probe list containing 119,272 URLs.

## 4 TESTING THE PROBE LIST

Using this new probe list of 119,272 candidate URLs, we attempt to access each URL from thirteen vantage points in eleven cities, as detailed in Table 2. Our selection spans several locations with varying degrees of Internet freedom, as categorized by Freedom House [45]. This includes vantage points in locations classified as

“free” (Japan, Taiwan, United Kingdom, France, USA), “partly free” (Hong Kong, India, Singapore), and “not free” (P.R. China).

In Asia, we focus on diverse environments, ranging from locations with known information controls (Beijing, Shanghai) to those typically associated with greater Internet freedom (Tokyo, Taipei). This contrast is crucial for our analysis, as it allows us to observe potential censorship patterns within the same continent. Similarly, by including locations in countries such as the United Kingdom and France, both classified as “free,” we aim to build a more complete baseline control against which to evaluate our probe list.

We clean the URLs generated from our set of 119,272 URLs by removing any text in the URL after a comma (including the comma). We also escape single quotation marks. After cleaning up, we have 17 repeated URLs, so this results in 119,255 unique URLs.<sup>4</sup>

**Table 2: Testing vantage points and their freedom status evaluated by the Freedom House [45].**

| Country/Region | Freedom Status | Test Location              |
|----------------|----------------|----------------------------|
| China          | Not Free       | Beijing<br>Shanghai        |
| Hong Kong      | Partly Free    | Hong Kong 1<br>Hong Kong 2 |
| India          | Partly Free    | Mumbai                     |
| Japan          | Free           | Tokyo                      |
| Singapore      | Partly Free    | Singapore                  |
| Taiwan         | Free           | Taipei                     |
| United Kingdom | Free           | London                     |
| France         | Free           | Paris                      |
| US-East        | Free           | Academic Network           |
| US-West 1      | Free           | Commercial Network         |
| US-West 2      | Free           | Commercial Network         |

**Table 3: Number of unique URLs and domains in each dataset.**

| Dataset                                  | URLs    | Domains |
|--|---------|---------|
| Source List                              | 139,957 | 106,878 |
| Probe List                               | 119,255 | 35,147  |
| Probe List (New Domains Only)            | 71,960  | 32,543  |
| Probe List (Domains in Source List Only) | 47,295  | 2,604   |

To help establish a baseline representing an uncensored environment, our US-East measurements are conducted from the Carnegie Mellon University network in the United States, where we do not expect any censorship to take place. US-West measurements originate from commercial servers of two different hosting companies in Silicon Valley. For testing in other regions, we utilized Virtual Private Servers (VPS) under our direct control, strategically located

<sup>4</sup>Also, 14 URLs contain the \$ character. We noticed after the fact that these interact poorly with our test environment due to shell variable expansion—they consistently returned 403 Forbidden errors. This glitch affects less than 0.0001% of our dataset.

in different cities worldwide, as outlined in Table 2.<sup>5</sup> By routing our test traffic through the networks of these diverse locations, we could subject our URL requests to any regional restrictions or policies enforced by corresponding local authorities.<sup>6</sup>

For each tested URL, we collected the web page response details, specifically the HTTP status code and curl exit code. Our goal is to assess if the page could be accessed from the various locations, and if not, to identify the nature of the error or connection failure encountered. In some cases, web pages may appear inaccessible due to server-side blocking mechanisms specifically refusing curl requests. To remedy this, we supplemented our measurements with data gathered using the OONI Probe [23] to gain deeper insights into potential blocking, providing more comprehensive information about censorship and network interference (§5.4).

## 4.1 Response Types

Attempting to access any of the URLs results in three broad categories of responses:

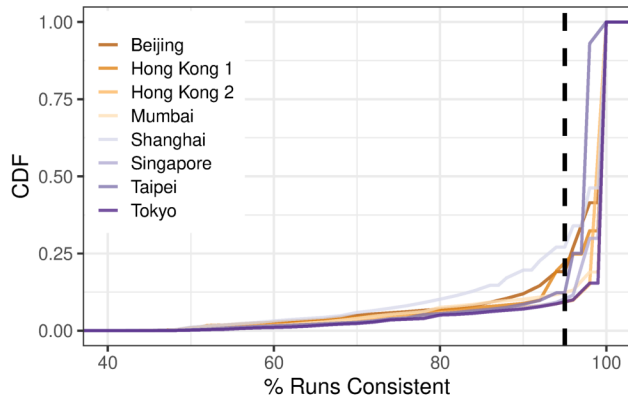
- (1) **Accessible.** These are URLs that return a 2XX HTTP status code, or a 3XX status code. We do not click on any links or follow any redirects, so we identify redirects as accessible for the sake of this experiment.<sup>7</sup>
- (2) **Inaccessible.** These are URLs that return a non-zero curl exit code, such as would result from a DNS error, port not connectable, invalid certificate, or formatting error. For results with an exit code of 28 (timeout), we specified a limit of 30 seconds. 15 seconds is the amount of time that Cloudflare chose as its timeout limit to establish a connection before resulting in Error 522: connection timed out [36], so we double this number for an upper bound. Based on prior work [64], we believe this number is a reasonable estimate for the maximum amount of time a human user may want to wait for a page to load.
- (3) **Error.** These URLs return a status code that is not in the 200s or 300s. The majority of status codes in this category are in the 4XX range. These generally imply client-side issues or server-side blocking such as Unauthorized (403) or Not Found (404).

To account for uncontrollable factors such as transient errors or packet loss, we repeat our measurements 50 times in each vantage point (apart from US-West 1 and US-West 2, where measurements were only repeated 8 times) between November 2023 and March 2024. In Figure 2, we plot the cumulative distribution of the number of runs that produce consistent results, for each location. For most locations, the c.d.f. presents a “bend” around 95%. Thus, we consider the results from a URL to be consistent if accessing the URL returns the same code over 95% of the time, and classify the result from that URL as the code that it consistently returns. This allows us to distinguish between spurious errors (potentially indicative of transient problems) and consistent errors (potentially indicative of censorship).

<sup>5</sup>US-West 1 and US-West 2 are located in the same city.

<sup>6</sup>Singapore may be a special case, which is addressed in §6.

<sup>7</sup>Certain ISPs block pages using 302 Redirects [76]. As such, our results are a conservative lower bound of actual censorship.



**Figure 2: The frequency (CDF) of percentage of consistent runs of URLs for each location outside the baseline. The vertical line (at 95%) is the cutoff for considering responses from a URL to be inconsistent and excluding it from our data.**

Unless otherwise noted, our analysis throughout this paper will use the results from only those URLs that are consistent.

## 4.2 Differences with Baseline (“Diff”)

We make no claims about the content of the pages, but aim to evaluate whether pages generated by our automated pipeline are potentially blocked in various locations. Therefore, we want to identify pages that are inaccessible only in certain locations, and not pages that are inaccessible because they no longer exist, are unavailable, or are inaccessible everywhere. To do so, we do not evaluate pages whose responses overlap with the “baseline.”

Our “baseline”—an average view across locations with high freedom scores, where pages are less likely to be censored—is determined from an aggregate of the five vantage points in the US, UK, and France. If all vantage points agree on the result (“accessible”, “inaccessible”, “error”) of an URL, then we classify that page as such in the baseline set. If our baseline vantage points do not all agree on the result of a URL, then it is not included in the baseline set.

We determine differences in each location by examining which URLs return results (accessible, inaccessible, or result in an error) that differ from their result in the baseline. If `example.com` is accessible in Singapore but results in an error in our baseline, then `example.com` is different from our baseline and in further analysis evaluated as an accessible site in Singapore. However, if `example.com` returns status code 4XX in Singapore and status code 5XX in our baseline set, then it is not considered to be different, as it results in an error in both locations. It thus would not be further evaluated in our Singapore dataset. We use general categories rather than specific codes to determine differences, as the particular type of error or reason for being inaccessible varies, but, to a general user trying to access these pages, it remains inaccessible. In short, unless otherwise stated, we only consider pages that give different results when accessed in these locations compared to the baseline in our analysis, resulting in a lower bound estimate of differences.

If the URL is not in the baseline set (i.e. our five baseline vantage points do not agree on its result), it is considered to differ from the baseline if it consistently returns some result in a vantage point.

## 5 PROBE LIST EVALUATION

We next evaluate the utility of our generated probe list across the testing vantage points, highlighting the effectiveness of our system in identifying previously unknown domains outside the source list that are potentially censored. As the majority of tested URLs are prefixed with `https://`, we primarily focus our analysis on the domains of the tested URLs rather than their paths.

### 5.1 Overall Result

Our measurements revealed evidence of potential censorship, with varying rates of URLs and domains being (in)accessible across the tested locations, as detailed in Table 4. Notably, Beijing and Shanghai exhibited significantly higher numbers of inaccessible cases compared to other vantage points. This disparity in connectivity suggests the presence of regional disparities in web accessibility, potentially attributable to nation-state censorship practices.

However, some of the inaccessible pages or pages that returned errors may not necessarily be indicative of intentional blocking due to content sensitivity. These issues could arise from general website problems, such as the site no longer existing or being temporarily unavailable, leading to errors (e.g., HTTP 404) regardless of the access location.

To remedy this issue and isolate potential instances of censorship, recall that we establish a baseline by aggregating measurements from five vantage points with high Internet freedom scores. This baseline served as an effective reference point, allowing us to identify pages that exhibited different accessibility patterns compared to the blocking behaviors commonly observed in censored environments.

Consequently, our subsequent analysis focused exclusively on the pages that yielded responses different from those observed in the baseline condition. By contrasting against this baseline, we can more accurately pinpoint instances where inaccessibility might be attributable to censorship rather than general website issues.

### 5.2 Known Domains: Overlap with Source List

While our system aims to generate previously *unknown* instances of potential censorship (i.e. URLs that are not in the source list), it is inevitable that some of the generated pages overlap with those in the source list, since our probe list generation method uses keyword-browsing combinations to find candidate pages. We call these overlapping cases “known domains”.

Our system is effective at finding URLs from known domains. Of the 119,255 URLs, 47,295 (39.7%) originate from domains present in our full 139K URL source list. These URLs are from 2,604 (7.4%) of known domains. While known domains comprise less than 7.5% of the total domains in our dataset, these domains contribute to 15% of the differences between domains in our measurements in Beijing and Shanghai from our baseline.

The higher proportion of domains being inaccessible in China may stem from biases in our source list and our system’s method of generating candidate pages. As shown in Table 13 (in Appendix A.3),

**Table 4: Within each vantage point, the number of URLs and domains with consistent results for each response type, with associated proportions in parentheses. As there may be multiple URLs from one domain, a domain may return multiple different responses depending on the URL, and thus be counted in more than one category. Thus, the sum of percentages may exceed 100%.**

| Location    | URL (Full)<br>Accessible | URL (Full)<br>Inaccessible | URL (Full)<br>Error | URL (Full)<br>Total | Dom (Full)<br>Accessible | Dom (Full)<br>Inaccessible | Dom (Full)<br>Error | Dom (Full)<br>Total |
|-------------|--------------------------|----------------------------|---------------------|---------------------|--------------------------|----------------------------|---------------------|---------------------|
| All Domains |                          |                            |                     |                     |                          |                            |                     |                     |
| London      | 95,017 (87.36%)          | 2,316 (2.13%)              | 11,428 (10.51%)     | 108,761             | 30,042 (91.60%)          | 769 (2.34%)                | 2,836 (8.65%)       | 32,796              |
| Paris       | 94,945 (87.40%)          | 1,965 (1.81%)              | 11,724 (10.79%)     | 108,634             | 29,851 (91.16%)          | 775 (2.37%)                | 2,975 (9.08%)       | 32,747              |
| US-East     | 96,813 (90.22%)          | 1,027 (0.96%)              | 9,472 (8.83%)       | 107,312             | 30,768 (93.83%)          | 527 (1.61%)                | 2,291 (6.99%)       | 32,791              |
| US-West 1   | 98,439 (86.13%)          | 2,095 (1.83%)              | 13,757 (12.04%)     | 114,291             | 31,020 (91.33%)          | 857 (2.52%)                | 3,068 (9.03%)       | 33,966              |
| US-West 2   | 97,102 (85.25%)          | 2,468 (2.17%)              | 14,338 (12.59%)     | 113,908             | 30,942 (91.26%)          | 888 (2.62%)                | 3,053 (9.00%)       | 33,905              |
| Beijing     | 64,518 (66.88%)          | 19,537(20.25%)             | 12,414 (12.87%)     | 96,469              | 23,402 (80.66%)          | 2,453 (8.45%)              | 3,929 (13.54%)      | 29,014              |
| Hong Kong 1 | 84,097 (87.45%)          | 1,849 (1.92%)              | 10,222 (10.63%)     | 96,168              | 28,109 (91.28%)          | 765 (2.48%)                | 2,647 (8.60%)       | 30,793              |
| Hong Kong 2 | 93,047 (85.51%)          | 3,319 (3.05%)              | 12,445 (11.44%)     | 108,811             | 29,329 (90.05%)          | 1,102 (3.38%)              | 2,997 (9.20%)       | 32,571              |
| Mumbai      | 91,549 (86.97%)          | 2,083 (1.98%)              | 11,636 (11.05%)     | 105,268             | 29,623 (91.05%)          | 839 (2.58%)                | 2,916 (8.96%)       | 32,536              |
| Shanghai    | 55,969 (64.40%)          | 19,447(22.37%)             | 11,498 (13.23%)     | 86,914              | 22,398 (80.74%)          | 2,517 (9.07%)              | 3,552 (12.80%)      | 27,740              |
| Singapore   | 93,800 (86.64%)          | 2,543 (2.35%)              | 11,926 (11.02%)     | 108,269             | 29,585 (90.83%)          | 870 (2.67%)                | 2,982 (9.15%)       | 32,573              |
| Taipei      | 92,228 (88.19%)          | 1,564 (1.50%)              | 10,789 (10.32%)     | 104,581             | 29,034 (91.45%)          | 739 (2.33%)                | 2,787 (8.78%)       | 31,748              |
| Tokyo       | 95,194 (87.47%)          | 2,051 (1.88%)              | 11,590 (10.65%)     | 108,835             | 29,995 (91.57%)          | 803 (2.45%)                | 2,827 (8.63%)       | 32,758              |

**Table 5: Percent of URLs and domains in each response type that were different from the baseline that came from domains not in the source list. Diff means the number of URLs or domains in each category that were not in that category in the baseline. For example, 78% (91%) of the domains that were inaccessible in Beijing (Mumbai) were from domains not in our source list. Overall, 85% (87%) of domains that returned different results from the baseline in Beijing (Mumbai) were from new domains not in our source list.**

| Location    | URL (Diff)<br>New/All<br>Accessible % | URL (Diff)<br>Inaccessible % | URL (Diff)<br>Error % | URL (Diff)<br>Total % | Dom (Diff)<br>New/All<br>Accessible % | Dom (Diff)<br>Inaccessible % | Dom (Diff)<br>Error % | Dom (Diff)<br>Total % |
|-------------|---------------------------------------|------------------------------|-----------------------|-----------------------|---------------------------------------|------------------------------|-----------------------|-----------------------|
| Beijing     | 49.73                                 | 25.03                        | 80.39                 | 41.63                 | 87.15                                 | 78.06                        | 90.26                 | 85.40                 |
| Hong Kong 1 | 47.84                                 | 81.05                        | 74.70                 | 57.36                 | 86.79                                 | 92.37                        | 89.58                 | 88.66                 |
| Hong Kong 2 | 47.48                                 | 75.10                        | 71.08                 | 59.64                 | 86.01                                 | 91.78                        | 88.39                 | 88.32                 |
| Mumbai      | 48.02                                 | 81.25                        | 74.93                 | 58.97                 | 86.61                                 | 90.69                        | 87.37                 | 87.84                 |
| Shanghai    | 67.38                                 | 27.51                        | 80.30                 | 43.34                 | 87.69                                 | 77.45                        | 90.66                 | 85.02                 |
| Singapore   | 49.24                                 | 69.62                        | 75.36                 | 59.78                 | 85.78                                 | 90.09                        | 88.38                 | 87.63                 |
| Taipei      | 51.29                                 | 93.56                        | 74.73                 | 58.93                 | 85.59                                 | 93.24                        | 90.14                 | 88.12                 |
| Tokyo       | 51.86                                 | 70.47                        | 74.02                 | 59.57                 | 86.66                                 | 89.97                        | 88.55                 | 88.02                 |

which displays the proportion of pages generated from domains already present in our source list, a much greater portion (over 20%) of known domains (including those that return the same response as in the baseline) are inaccessible from China compared to most other locations (<4.5%). Indeed, only around 68% of known domains are accessible when accessed from Beijing and Shanghai, whereas this proportion exceeds 90% elsewhere. These results suggest that some pages on the source list, despite being outdated, remain blocked, potentially because their topics continue to be sensitive, making them more likely to appear in search results from related keyword combinations. It also suggests that while the original source list appears to accurately identify domains and URLs blocked in China, it may be biased toward this locality. The majority (>70%) of URLs inaccessible in Beijing and Shanghai came from known domains, while this proportion was less than 31% in all other locations. This implies that for potentially blocked pages, our generated probe list is heavily influenced by the source list, generating many URLs from

known blocked domains. Nonetheless, given the changes in pages online and our methods of augmenting keywords, our system can still discover new domains that may be subject to censorship.

### 5.3 New Domains

We classify domains as “new domains” if they appear in the probe list but not in the source list. This allows us to evaluate the utility of our system in the automated generation and detection of previously unknown censorship instances. To establish a conservative lower bound on the number of new domains that we discover through our automated process, we focus on domains that did not appear in the set of 106K unique domains from the full source list of 139K URLs rather than from the subset of 51K URLs used to generate our probe list. Remarkably, out of the 35,000 unique domains in our probe list, over 32,500 were not present in our source list. Hence, we filter our dataset down to 71,960 unique URLs originating from these previously unseen domains for all further analysis (Table 3). Unless



otherwise noted, all analysis from this point forth is conducted on this subset of “new domains.”

In both Beijing and Shanghai, a higher portion (>80%) of inaccessible new domains were accessible (or returned an error) in the baseline, while in other vantage points this was less than 50%, except for Hong Kong 2 at 60% (Table 7). This implies that we are observing a higher rate of potential blocks from candidate pages in our probe list from locations in China. This suggests that our system is good at finding potentially new blocked pages for China, although the results are less conclusive for other locations.

## 5.4 OONI Probe Tests

To augment our analysis, we conducted additional tests using OONI Probe [23] at each vantage point. This allowed us to gain deeper insights and more detailed measurements in comparison to the results obtained from `curl`. For each location, we specifically tested the list of URLs associated with new domains that have different results from our baseline measurements.

**Agreement with `curl` results.** The results obtained from the OONI Probe measurements generally aligned with our `curl`-based testing. We considered the results to be in agreement if 1) both `curl` and OONI concurred that a URL was accessible, or if 2) `curl` failed to connect (returning an inaccessible or error code) while OONI detected an anomaly (DNS, TCP/IP, or HTTP). The distribution of measurements exhibiting this agreement can be found in Table 8. Through this combined analysis, we identified 1,490 unique domains that potentially faced blocking, as they remained inaccessible for over four months of `curl` measurements and triggered anomalies in the OONI tests.

A significant portion (>70%) of the domains that our `curl` tests marked as inaccessible in Beijing or Shanghai also triggered anomalous results indicative of potential blocking in the OONI measurements (Table 14 in Appendix A.3). Notably, in Beijing and Shanghai, over 1,200 domains not present in our original source list returned anomalies detected by OONI and consistently failed to connect via `curl`. Among these, 1,068 unique domains exhibited anomalous OONI results in both locations, with a total of 1,355 domains affected in at least one of the two cities. This finding strongly suggests that our discovery method for compiling the probe list successfully identified previously unknown domains that may be subject to blocking in these regions.

Moreover, we observed overlaps with other known blocked pages [52] in these locations but were not part of our initial source list, such as `genius.com` and `huggingface.co`. We also uncovered domains that, while not on known blocked lists, thematically align with potential censorship targets, such as `governmentjobs.com` and `rilot.com` (Rhode Island Lottery), as well as numerous pornography and adult sites.

**Where do the newly discovered pages come from?** The majority of inaccessible URLs that also triggered anomalies in OONI were generated by Top2Vec-Trends (approximately 58%), followed by LDA-TFIDF and Top2Vec (each accounting for 13-14% of the total number of URLs). This observation suggests that utilizing Top2Vec-Trends is an effective approach for identifying potentially blocked pages and updating probe lists.

## 5.5 Comparison with Previous Probe List Generation Efforts

Our approach demonstrates over 10 times higher efficacy in discovering potentially blocked domains compared to similar prior efforts. While FilteredWeb [37] discovered 4.11 blocked domains per 1,000 domains crawled, our system identified 45.79 potentially blocked domains per 1,000 domains crawled. Moreover, compared to the work by Hounsel et al. [57], which found 1,255 blocked domains in crawls of 1,000,000 URLs, our approach uncovered 1,490 potentially blocked domains in crawls of just 71,960 URLs. Remarkably, the vast majority (1,473) of these 1,490 newly discovered domains are not part of the 1,255 domains found in [57], suggesting the efficacy of our system in identifying domains and content that differ from previous efforts.

## 5.6 Verification Against the GFW

To further validate our findings, we examined the potentially blocked domains identified in Beijing and Shanghai by testing them directly against the GFW’s DNS, HTTP, and HTTPS filters, with each domain tested at least three times. The vast majority (over 90%) of domains exhibiting DNS anomalies as identified by OONI were indeed blocked by the GFW’s DNS filter [27, 55] (429/457 for Beijing and 422/461 for Shanghai). A smaller number of domains where OONI has detected TCP/IP (15/657 for Beijing, 14/669 for Shanghai) or HTTP-Failure anomalies (12/90 for Beijing, 6/91 for Shanghai) can also be confirmed to be blocked by the GFW, based on known blocking patterns [32, 77]. In total, 527 unique domains between Beijing and Shanghai were detected to be blocked by the GFW.

While the majority of domains exhibiting TCP/IP anomalies detected by OONI were not directly present on the GFW’s blocklists, our further investigation suggests that the GFW also blocks the hosting servers (IP addresses) of these domains, rather than the domains themselves. Consequently, these domains remained inaccessible due to the blocking of their hosting IP addresses.

To that end, given the agreement between our `curl` tests, OONI measurements, and the GFW tests, we are confident that we have identified over 500 domains that are almost certainly censored in China, with an additional 718 domains suspected of being blocked based on the observed TCP/IP anomalies. This observation also underscores the significance of collateral damage caused by IP-based blocking.

## 5.7 Ground Truth

For each vantage point, we further ground our results against a list of 50 non-sensitive and neutral sites that are unlikely to be blocked around the world, including top educational institutions with international enrollment (.edu sites), academic resources (such as conference websites, journals, and associations), connectivity checks (e.g., captive portal detection), our own controlled domains, and miscellaneous sites (such as international events and famous museums).

While testing these sites, we observed a few anomalies and potential instances of server-side blocking. At least 3 of the 50 “ground truth” URLs implement some server-side blocking against automated headless browsers like `curl`, resulting in Error 403 in all vantage points. However, these pages did not exhibit anomalies

**Table 6: Of all the URLs or domains that gave a response different (Diff) from that given in the baseline (given in the first row), the count and percentage of URLs or domains within each response type by location. For example, of all URLs returned different results from the baseline in Shanghai, 42% of these URLs differed because they were inaccessible. 36% of all domains in Shanghai that differed from the baseline were inaccessible. Since different URLs from the same domain may return different types of codes, the sum of percentages may exceed 100%.**

| Location    | URL (Diff)<br>Accessible | URL (Diff)<br>Inaccessible | URL (Diff)<br>Error | URL (Diff)<br>Total | Dom (Diff)<br>Accessible | Dom (Diff)<br>Inaccessible | Dom (Diff)<br>Error | Dom (Diff)<br>Total |
|-------------|--------------------------|----------------------------|---------------------|---------------------|--------------------------|----------------------------|---------------------|---------------------|
| Baseline    | 54,369 (90.78%)          | 673 (1.12%)                | 4,851 (8.10%)       | 59,893              | 26,550 (93.83%)          | 411 (1.45%)                | 1,847 (6.53%)       | 28,295              |
| Beijing     | 3,082 (23.26%)           | 4,717 (35.60%)             | 5,451 (41.14%)      | 13,250              | 1,289 (26.62%)           | 1,619 (33.43%)             | 2,011 (41.52%)      | 4,843               |
| Hong Kong 1 | 3,317 (56.05%)           | 924 (15.61%)               | 1,677 (28.34%)      | 5,918               | 1,643 (62.71%)           | 339 (12.94%)               | 688 (26.26%)        | 2,620               |
| Hong Kong 2 | 3,265 (41.15%)           | 1,873 (23.60%)             | 2,797 (35.25%)      | 7,935               | 1,654 (53.48%)           | 603 (19.50%)               | 891 (28.81%)        | 3,093               |
| Mumbai      | 3,489 (50.41%)           | 1,053 (15.21%)             | 2,379 (34.37%)      | 6,921               | 1,720 (60.41%)           | 370 (13.00%)               | 816 (28.66%)        | 2,847               |
| Shanghai    | 2,415 (19.96%)           | 5,136 (42.44%)             | 4,550 (37.60%)      | 12,101              | 1,211 (26.94%)           | 1,635 (36.37%)             | 1,719 (38.23%)      | 4,496               |
| Singapore   | 3,249 (46.49%)           | 1,196 (17.11%)             | 2,544 (36.40%)      | 6,989               | 1,581 (57.20%)           | 382 (13.82%)               | 867 (31.37%)        | 2,764               |
| Taipei      | 4,313 (63.27%)           | 712 (10.44%)               | 1,792 (26.29%)      | 6,817               | 1,799 (65.56%)           | 276 (10.06%)               | 731 (26.64%)        | 2,744               |
| Tokyo       | 3,855 (55.31%)           | 864 (12.40%)               | 2,251 (32.30%)      | 6,970               | 1,774 (64.37%)           | 323 (11.72%)               | 727 (26.38%)        | 2,756               |

**Table 7: Percentage of URLs and domains with responses different from baseline (Delta), only looking at new domains. So 29% of new domains that returned an error in Tokyo did not return an error in our baseline. However, only 9% of new domains tested in Tokyo returned a response that differed from our baseline’s response.**

| Location    | URL<br>Accessible % | URL<br>Inaccessible % | URL<br>Error % | URL<br>Total % | Domain<br>Accessible % | Domain<br>Inaccessible % | Domain<br>Error % | Domain<br>Total % |
|-------------|---------------------|-----------------------|----------------|----------------|------------------------|--------------------------|-------------------|-------------------|
| Beijing     | 6.84                | 88.93                 | 57.19          | 22.13          | 5.89                   | 82.43                    | 56.86             | 18.08             |
| Hong Kong 1 | 6.38                | 61.52                 | 26.64          | 9.90           | 6.32                   | 49.06                    | 29.34             | 9.19              |
| Hong Kong 2 | 5.83                | 73.65                 | 36.77          | 11.99          | 6.10                   | 60.36                    | 33.78             | 10.27             |
| Mumbai      | 6.14                | 61.94                 | 33.17          | 10.54          | 6.26                   | 49.07                    | 31.79             | 9.44              |
| Shanghai    | 5.87                | 89.10                 | 51.30          | 21.71          | 5.78                   | 81.75                    | 53.62             | 17.55             |
| Singapore   | 5.72                | 64.09                 | 34.49          | 10.58          | 5.78                   | 49.10                    | 32.95             | 9.17              |
| Taipei      | 7.78                | 51.93                 | 27.47          | 10.77          | 6.71                   | 41.32                    | 29.61             | 9.35              |
| Tokyo       | 6.66                | 56.32                 | 31.78          | 10.48          | 6.39                   | 45.05                    | 29.14             | 9.09              |

**Table 8: Number of URLs and domains with each type of result from tests with the OONI Probe that triggered anomalies. The URLs tested on OONI were those that consistently returned the same inaccessible or error response with curl over a period of 4 months, to reduce the chance of transient network issues causing false positives. There are four types of anomalies that may be indicative of potential censorship (DNS, TCP/IP, HTTP-Failure, and HTTP-Diff). The percentages in these columns indicate the proportion of anomalous measurements each type makes up. Since different URLs from the same domain may return different types of codes, the sum of percentages may exceed 100%.**

| Location    | URL<br>DNS     | URL<br>TCP/IP  | URL<br>HTTP-Failure | URL<br>HTTP-Diff | URL<br>Total | Domain<br>DNS | Domain<br>TCP/IP | Domain<br>HTTP-Failure | Domain<br>HTTP-Diff | Domain<br>Total |
|-------------|----------------|----------------|---------------------|------------------|--------------|---------------|------------------|------------------------|---------------------|-----------------|
| Beijing     | 1,403 (45.64%) | 1,496 (48.67%) | 155 (5.04%)         | 20 (0.65%)       | 3,074        | 457 (38.08%)  | 657 (54.75%)     | 90 (7.50%)             | 11 (0.92%)          | 1,200           |
| Hong Kong 1 | 2 (0.38%)      | 506 (96.20%)   | 18 (3.42%)          | 0 (0.00%)        | 526          | 1 (0.44%)     | 213 (94.67%)     | 11 (4.89%)             | 0 (0.00%)           | 225             |
| Hong Kong 2 | 1 (0.18%)      | 521 (94.38%)   | 28 (5.07%)          | 2 (0.36%)        | 552          | 1 (0.31%)     | 299 (94.03%)     | 16 (5.03%)             | 2 (0.63%)           | 318             |
| Mumbai      | 2 (0.51%)      | 361 (92.56%)   | 26 (6.67%)          | 1 (0.26%)        | 390          | 2 (1.11%)     | 163 (90.56%)     | 15 (8.33%)             | 1 (0.56%)           | 180             |
| Shanghai    | 1,374 (41.57%) | 1,756 (53.13%) | 156 (4.72%)         | 19 (0.57%)       | 3,305        | 461 (37.69%)  | 669 (54.70%)     | 91 (7.44%)             | 10 (0.82%)          | 1,223           |
| Singapore   | 3 (0.81%)      | 356 (95.70%)   | 12 (3.23%)          | 1 (0.27%)        | 372          | 2 (1.14%)     | 167 (95.43%)     | 7 (4.00%)              | 1 (0.57%)           | 175             |
| Taipei      | 1 (0.20%)      | 488 (97.60%)   | 9 (1.80%)           | 2 (0.40%)        | 500          | 1 (0.52%)     | 184 (94.85%)     | 9 (4.64%)              | 2 (1.03%)           | 194             |
| Tokyo       | 3 (1.12%)      | 241 (89.59%)   | 22 (8.18%)          | 3 (1.12%)        | 269          | 1 (0.75%)     | 118 (88.06%)     | 12 (8.96%)             | 3 (2.24%)           | 134             |

when tested using OONI Probe. For example, nature.com was timed out with curl’s Error code 28 in both Beijing and Shanghai, but was accessible when tested by OONI. In Taipei, one of the URLs

returned Error 403 when tested by curl, but was accessible elsewhere and when tested by OONI. In addition, OONI Probe reported some anomalies or errors for a few pages in certain locations, but

these pages were accessible via curl, potentially due to transient errors.

By validating candidate pages using OONI Probe and combining with results from the curl measurements over 4 months, we can reduce potential false positives arising from server-side blocking and other transient errors as our analysis is based on consistent results that are agreed between curl and OONI Probe. This allows us to have more certainty in our results.

### 5.8 Regional Similarities and Differences

As our vantage points are mainly in Asia, we evaluate the similarity between domains that returned accessible, inaccessible, or errors between vantage points. We employ the Jaccard similarity index, defined as  $J = |A \cap B| / |A \cup B|$  where  $A$  and  $B$  represent two sets. A value of  $J = 1$  indicates that all domains between the two locations are identical, while  $J = 0$  signifies that the domains between the two locations are mutually exclusive.

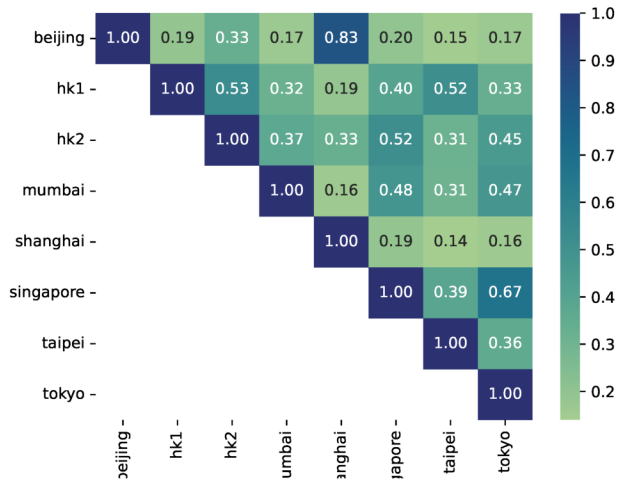


Figure 3: Jaccard similarity index of inaccessible domains between locations.

**Inaccessible Domains.** Our analysis reveals anticipated trends across different vantage points regarding inaccessible domains. Beijing and Shanghai exhibit highly similar patterns ( $J = 0.83$ , see Figure 3), indicating uniform blocking rules within mainland China, aligning with the country’s centralized censorship model observed in prior studies. Our second server in Hong Kong (Hong Kong 2)—despite being from the same cloud provider as the two servers in mainland China—displays similar connectivity patterns, though with fewer inaccessible domains. Nonetheless, results from Hong Kong 1 and Hong Kong 2, despite being from different providers, are more similar to each other than any other location. This may suggest that policies by locality (at least for Hong Kong) supersede policies by the ISP/commercial entity.

While the set of inaccessible domains varies among most observation points, the differences are not extreme, except for the greater disparity between Beijing and Shanghai compared to other

locations. We further note a higher prevalence of DNS tampering in Beijing and Shanghai (Table 8), accounting for over 35% of all anomalies detected by OONI in these locations, but less than 2% in any other location. This aligns with prior studies, confirming that DNS filtering plays the forefront role in China’s censorship [27, 55].

Intriguingly, in Mumbai and Singapore—two locations where we anticipated blocked pages—inaccessible domains patterns do not significantly deviate from locations where censorship is not expected. We discuss this further in §6.

**Exit Codes.** Analyzing the exit codes of curl requests, we predominantly observe Code 28 (Operation Timeout) in Beijing, Shanghai, Hong Kong 1, and Taipei, as detailed in Table 11 in Appendix A.3. This code’s frequent occurrence in Beijing and Shanghai (>63%), in particular, is likely due to network interference caused by the GFW. This is distinct from server-related issues, given the unique pattern of timeouts in these locations compared to the Hong Kong 2 server, which is hosted by the same provider as that in Beijing and Shanghai. However, we also see high proportions of timeouts in Hong Kong 1 and in Taipei, which is unexpected and warrants further investigation.

**Error Codes and Server-Side Blocking** Overlaps between domains that encountered errors between our different vantage points (Fig. 4) follow patterns similar to inaccessible domains. This suggests that the prevalence of pages that return errors are more similar within than across geographical boundaries.

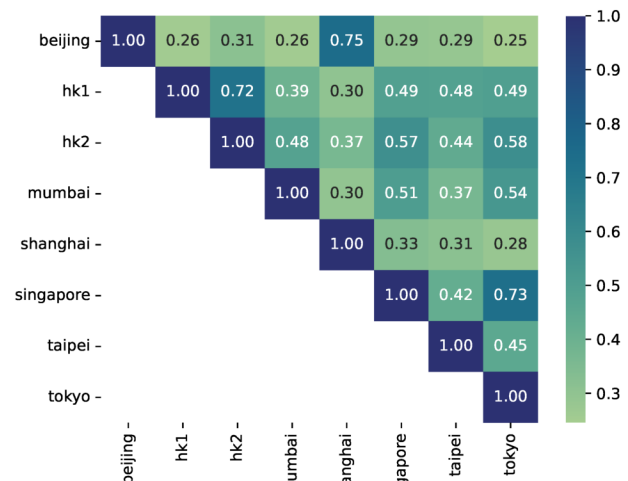


Figure 4: Jaccard similarity index of domains that returned HTTP response code errors between locations.

Error 403 (Forbidden) are by far the most common across all locations (Table 12 in Appendix A.3), accounting for over 80% of errors in each location. However, as seen in Table 7 a higher proportion of domains that returned errors in Beijing and Shanghai (over 50%) do not return errors in our baseline compared to other vantage points (around 30%). A plausible explanation that we conjecture is that server side blocking may have been implemented to discriminate against automated requests from these particular locations. Despite the nature of such discrimination, it is still a form of information

controls, preventing the free flow of information. Thus, domains that are suspected to return error pages due to server-side blocking are still valuable to the community in general.

Nevertheless, to mitigate the impact of server-side blocking, either due to automated requests or other reasons, we supplement our `curl` tests with OONI Probe tests to reduce the likelihood of false positives in our results as discussed earlier (§5.4).

## 6 DISCUSSION

### 6.1 Probe List and Source List Biases

While our probe list contains over 119K unique URLs, it contains only 35K unique domains. Given that most accesses took place over HTTPS, domain-level blocking rather than blocking of specific pages is likely more prevalent. Indeed, the majority of the pages provided in the source list were homepages/the main page of the domain, whereas our pipeline generated more specific pages. Future iterations could focus only on generating pay-level domains rather than specific URLs. As we generate new candidate pages from the top-10 search results, this may tend towards popular sites, as these are likely more popular pages given their position in search engines. However, this also likely mimics the browsing of regular users who will navigate to more easily found sites. Therefore, this method could more closely resemble user browsing patterns.

We also notice a higher proportion of URLs generated from domains that are in the source lists. Over 47K URLs came from a set of 2K domains that were in our source lists, while the other 71.9K came from our new 32.5K domains. This is expected, as URLs from domains known to be blocked are more likely to contain content prevalent in our keywords. However, we saw that the majority of inaccessible URLs that also triggered anomalies in OONI were generated through Top2Vec-Trends. This suggests that using Google Trends to expand keywords for generating candidate pages is a promising way to update probe lists with new and relevant topics.

Furthermore, the majority of new domains that we find to be blocked are in Beijing and Shanghai. Hence, our system tends to generate more pages that are potentially blocked in China, possibly due to biases in our source list. As censorship research is often focused on China and the GFW, data of this nature may be more prevalent in datasets on which we build. Future work on censorship detection should examine methods less biased toward known results, so that they are more accurate globally rather than focused on any particular region.

### 6.2 Locations

Our findings in Mumbai and Singapore are surprising to us, as we expected to detect censored pages in these locations. However, our results suggest the behavior of networks in these locations are more similar to vantage points considered “free.”

For Singapore, we successfully accessed numerous pages typically known to be blocked [49, 81]. Not only could we connect to these pages, but we also manually verified that the retrieved content matched our baseline. This discrepancy arises because content restrictions are implemented by ISPs following government directives rather than through a centralized, nation-state level approach [44]. Our VPS provider in Singapore, operating within its own ISP, likely did not enforce these blocks. To test this hypothesis, we used a

different IP address that is not located inside a data center to check the accessibility of specific sites listed on Wikipedia, confirming that they were indeed blocked. This pattern may also be present in India. These deviations between expected and observed censorship behaviors in these regions warrant further investigation.

Since most of our vantage points are located in data centers, they may not experience the same level of nation-state censorship as other locations. This could explain why our experiments detect more potentially blocked pages in mainland China, where the Great Firewall (GFW) enforces centralized censorship [38, 53, 55].

**(In)Consistencies Across Runs.** Overall, in Beijing, Shanghai, and Hong Kong 1, fewer URLs consistently returned the same response. Compared to other vantage points, timeouts occur more frequently in these vantage points for pages that are otherwise accessible, resulting in a greater number of URLs with inconsistent responses. We suspect that in Beijing and Shanghai, this may be due to the throttling of international links that slows down our traffic in China [83]. Thus, certain URLs that returned timeouts may in fact be accessible, but timeout due to this throttling. However, as we take a strict lower bound on our results in requiring all runs to return the same result for each URL, we mitigate the effects of inconsistent runs.

### 6.3 Limitations and Future Work

In this work, we only examine the high level response of a page—whether it is accessible, inaccessible, or returns an error. This may result in us missing certain potentially censored pages, such as 200 or 300 codes returning from block pages that state a page is blocked, or pages with different (or missing) content depending on the locality in which it is viewed. Nonetheless, such a method gives us a conservative estimate of the ability to generate potentially censored domains. Future work should examine pcaps or content of pages (as done in ICLab [63] for instance) for a more granular analysis of censorship.

Our probe list contains mainly English language pages, and thus we may miss pages containing topics that are more specific to specific regions. While we use BERTopic to generate pages not in English, BERTopic appears less effective at producing censored pages than other techniques.

We note that while we use Google Search API to gather potential URLs for testing, there are myriad other search engines such as Bing, Baidu, or Yandex. Using Google Search may bias results, as different search engines have different regional popularities. Other works such as FilteredWeb [37] and research by Hounsel et al.[57] show that using alternative sources such as Bing are successful in finding blocked web pages. Future work could incorporate more than one search engine to provide a more diverse set of candidate pages.

We incorporate Google Trends to generate our probe list, since the majority of our source list is old (and potentially outdated). Thus, future work may wish to examine current events, as censored pages may change over time given changes and shifts in sociopolitical realities. Nonetheless, we show that even with potentially stale lists, we can generate relevant candidate pages for testing.

While the ability to generate candidate pages from new domains in an automated fashion is useful, this does not preclude the necessity of subject matter expertise. Indeed, while we are able to discover new domains that are likely to be censored, the accuracy of our system can be further improved. Future refinements could include keywords or topics manually curated by experts with domain knowledge, not only to be able to allow for more salient or current topics, but also perhaps as a way to balance out potential biases in the source list data.

Additionally, another limitation is the possibility of stricter censorship restrictions happening due to testing with OONI Probe [73], a known censorship testing tool. This may lead to detecting potentially higher rates of blocked pages, due to all traffic (including benign traffic) from the vantage point being blocked for a set amount of time [78]. We attempt to limit this by only testing pages that were consistently not accessible in the curl measurements over a 4 month period to reduce false positives.

## 6.4 Ethics

Internet censorship is a sensitive topic. This is also evident by numerous newly generated websites belonging to this category. Measurement studies in this domain have to be conducted with utmost care. For that reason, we opt to use our own measurement vantage points rather than relying on volunteers that could pose a risk to the participants. While this design choice reduces the number of blocked websites that we can detect in some localities as discussed above, it also allows us to conduct our measurements in an ethically sound manner. Yet, the result of newly generated websites that are censored by the GFW is promising and a strong indication that our generated probe list can be a useful starting point for global measurement platforms to discover more censorship events around the world.

Moreover, to responsibly handle the data collection process, we employed lightweight HTTP requests to obtain only the index page of the probed web pages with a low frequency of requests (~1/day/URL). These requests are also terminated quickly once completed to avoid saturating network and computational resources of those sites that we crawl.

## 7 CONCLUSION

In this work, we show the feasibility of automating the generation of candidate pages for censorship testing. We find over 1,000 candidate domains that do not appear in our source list that are potentially blocked in China and 1,400 domain over all our vantage points. We also demonstrate that our system is capable of finding sensitive pages in other locales in Asia. We plan on using the algorithms described here as a feedback mechanism, where, periodically, the probe list is fed back to the system as a source list, so that the system can automatically continuously update candidate pages and are working to integrate this with ICLab.

## ACKNOWLEDGMENTS

We would like to thank Diogo Barradas, Alexandra Nisenoff, and Zachary Weinberg for their help and support in this work. This research was partially supported by the National Science Foundation under award CNS-1814817 and the CMU SCS Dean's Fellowship.

## REFERENCES

- [1] 2010. The OpenNet Initiative. <https://opennet.net/>
- [2] 2021. NLTK stop words. <https://pythonspot.com/nltk-stop-words/> Accessed on 2023-10.
- [3] 2023. Amharic Segmenter and tokenizer. <https://github.com/uhh-lt/amharicprocessor> Accessed on 2023-10.
- [4] 2023. c-TF-IDF – BERTopic. [https://maartengr.github.io/BERTopic/getting\\_started/ctfidf/ctfidf.html](https://maartengr.github.io/BERTopic/getting_started/ctfidf/ctfidf.html) Accessed on 2023-10.
- [5] 2023. A CLASSLA Fork of Stanza for Processing Slovenian, Croatian, Serbian, Macedonian and Bulgarian. <https://github.com/clarinsi/classla> Accessed on 2023-10.
- [6] 2023. Custom Search JSON API | Programmable Search Engine | Google for Developers. <https://developers.google.com/custom-search/v1/overview> Accessed on 2023-10.
- [7] 2023. The Domain Name Industry Brief. <https://dnib.com/articles/the-domain-name-industry-brief-q4-2023>.
- [8] 2023. extra-stopwords. <https://github.com/Xangis/extra-stopwords/tree/master> Accessed on 2023-10.
- [9] 2023. Google Trends. <https://trends.google.com/trends/> Accessed on 2023-10.
- [10] 2023. Hebrew Tokenizer. <https://github.com/YontiLevin/Hebrew-Tokenizer> Accessed on 2023-10.
- [11] 2023. Issue 372: BERTopic vs. Top2Vec. <https://github.com/MaartenGr/BERTopic/issues/372#issuecomment-995502838> Accessed on 2023-10.
- [12] 2023. Khmer natural language processing toolkit. <https://github.com/VietHoang1512/khmer-nltk> Accessed on 2023-10.
- [13] 2023. Natural Language Toolkit for Indic Languages (iNLTK). <https://github.com/goru001/inltk> Accessed on 2023-10.
- [14] 2023. nlpO3. <https://github.com/PyThaiNLP/nlpo3> Accessed on 2023-10.
- [15] 2023. NLTK :: Sample usage for stem. <https://www.nltk.org/howto/stem.html#unit-tests-for-the-porter-stemmer> Accessed on 2023-10.
- [16] 2023. Pashto Stopwords Corpus and Text Cleansing. <https://github.com/mohbadar/pashto-stopwords/tree/master> Accessed on 2023-10.
- [17] 2023. Python client library | Cloud Translation | Google Cloud. <https://cloud.google.com/translate/docs/reference/libraries/v3/python> Accessed on 2023-10.
- [18] 2023. Rakuten MA Python. <https://github.com/ikegami-yukino/rakutenmapython> Accessed on 2023-10.
- [19] 2023. spaCy Language Data. <https://github.com/explosion/spaCy/tree/master/spacy/lang> Accessed on 2023-10.
- [20] 2023. Stanford CoreNLP. <https://github.com/stanfordnlp/CoreNLP/tree/main> Accessed on 2023-10.
- [21] 2023. Stopwords for African languages. <https://github.com/masakhane-io/masakhanePreprocessor/tree/main/african-stopwords> Accessed on 2023-10.
- [22] 2023. Stopwords ISO. <https://github.com/stopwords-iso/stopwords-iso> Accessed on 2023-10.
- [23] 2024. OONI Probe Measurement Engine and CLI. <https://github.com/ooni/probe-cli> Accessed Mar 14, 2024.
- [24] 2024. Top Website Statistics for 2024 – Forbes Advisor. <https://www.forbes.com/advisor/business/software/website-statistics/>
- [25] Dimo Angelov. 2020. Top2Vec: Distributed Representations of Topics. arXiv:arXiv:2008.09470
- [26] Anonymous. 2012. The Collateral Damage of Internet Censorship by DNS Injection. *SIGCOMM Computer Communications Review* 42, 3 (2012), 21–27.
- [27] Anonymous, Arian Akhavan Niaki, Nguyen Phong Hoang, Phillipa Gill, and Amir Houmansadr. 2020. Triplet Censors: Demystifying Great Firewall's DNS Censorship Behavior. In *Proceedings of the 10th USENIX Workshop on Free and Open Communications on the Internet (FOCI '20)*.
- [28] Simurgh Aryan, Homa Aryan, and J. Alex Halderman. 2013. Internet Censorship in Iran: A First Look. In *Free and Open Communications on the Internet*. USENIX.
- [29] Adrien Barbaresi. 2021. Trafilatura: A Web Scraping Library and Command-Line Tool for Text Discovery and Extraction. In *Proceedings of the Joint Conference of the 59th Annual Meeting of the Association for Computational Linguistics and the 11th International Joint Conference on Natural Language Processing: System Demonstrations*. Association for Computational Linguistics, 122–131.
- [30] Berkman Klein Center. 2023. Website Inaccessibility Test Lists. <https://github.com/berkmancenter/url-lists>
- [31] David M Blei, Andrew Y Ng, and Michael I Jordan. 2003. Latent dirichlet allocation. *Journal of machine Learning research* 3, Jan (2003), 993–1022.
- [32] Kevin Bock, Gabriel Naval, Kyle Reese, and Dave Levin. 2021. Even Censors Have a Backup: Examining China's Double HTTPS Censorship Middleboxes. In *Proceedings of the ACM SIGCOMM Workshop on Free and Open Communications on the Internet*.
- [33] Brad Solomon. 2023. demoji. <https://github.com/Mimino666/langdetect> Accessed on 2023-10.
- [34] Citizen Lab. 2023. URL testing lists intended for discovering website censorship. <https://github.com/citizenlab/test-lists>
- [35] Richard Clayton, Steven J. Murdoch, and Robert N. M. Watson. 2006. Ignoring the Great Firewall of China. In *Proceedings of the 6th Workshop on Privacy Enhancing*

- Technologies (PET). Springer, 20–35.
- [36] Cloudflare Help Center. 2023. Troubleshooting Cloudflare 5XX errors. <https://developers.cloudflare.com/support/troubleshooting/cloudflare-errors/troubleshooting-cloudflare-5xx-errors/#error-522-connection-timed-out>
- [37] Alexander Darer, Oliver Farnan, and Joss Wright. 2017. FilteredWeb: A framework for the automated search-based discovery of blocked URLs. *2017 Network Traffic Measurement and Analysis Conference (TMA)* (2017).
- [38] Ronald Deibert. 2010. *China's Cyberspace Control Strategy: An Overview and Consideration of Issues for Canadian Policy*. Canadian International Council.
- [39] Ronald Deibert. 2020. *Reset: Reclaiming the internet for civil society*. House of Anansi.
- [40] Ronald Deibert. 2022. Subversion Inc: The Age of Private Espionage. *Journal of Democracy* 33 (2022), 28 – 44.
- [41] Ronald Deibert, J. Palfrey, Rafal Rohozinski, and Jonathan Zittrain. 2010. Access Controlled - The Shaping of Power, Rights, and Rule in Cyberspace. *CrimRxiv* (2010).
- [42] Oliver Farnan, Alexander Darer, and Joss Wright. 2016. Poisoning the Well – Exploring the Great Firewall's Poisoned DNS Responses. In *Workshop on Privacy in the Electronic Society*. ACM.
- [43] Arturo Filastò and Jacob Appelbaum. 2012. OONI: Open Observatory of Network Interference. In *Free and Open Communications on the Internet*. USENIX.
- [44] Freedom House. 2020. Freedom on the Net - Singapore. <https://freedomhouse.org/country/singapore/freedom-net/2020>.
- [45] Freedom House. 2023. Freedom Status of Countries and Territories. <https://freedomhouse.org/countries/freedom-world/scores>.
- [46] Genevieve Gebhart, Anonymous Author, and Tadayoshi Kohno. 2017. Internet Censorship in Thailand: User Practices and Potential Threats. In *European Symposium on Security & Privacy*. IEEE.
- [47] Phillipa Gill, Masashi Crete-Nishihata, Jakub Dalek, Sharon Goldberg, Adam Senft, and Greg Wiseman. 2015. Characterizing Web Censorship Worldwide: Another Look at the OpenNet Initiative Data. *Transactions on the Web* 9, 1 (2015).
- [48] Google. 2023. Compact Language Detector v3. <https://github.com/google/cld3>
- [49] Gregory Loo. 2015. Is Playboy set for Singapore after dropping nude pictures? MDA says. <https://tnp.straitstimes.com/news/singapore-news/playboy-set-singapore-after-dropping-nude-pictures-mds-says>
- [50] Maarten Grootendorst. 2022. BERTopic: Neural topic modeling with a class-based TF-IDF procedure. *arXiv preprint arXiv:2203.05794* (2022).
- [51] H. Hanley, D. Kumar, and Z. Durumeric. 2024. Spurious Sites: Tracking the Spread and Sway of Spurious News Stories at Scale. In *2024 IEEE Symposium on Security and Privacy (SP)*.
- [52] Nguyen Phong Hoang. 2020. GFWatch Dashboard. <https://gfwatch.org>
- [53] Nguyen Phong Hoang, Jakub Dalek, Masashi Crete-Nishihata, Nicolas Christin, Vinod Yegneswaran, Michalis Polychronakis, and Nick Feamster. 2024. GFWeb: Measuring the Great Firewall's Web Censorship at Scale. In *Proceedings of the 33th USENIX Security Symposium (USENIX Security '24)*.
- [54] Nguyen Phong Hoang, Sadie Doreen, and Michalis Polychronakis. 2019. Measuring I2P Censorship at a Global Scale. In *Proceedings of the 9th USENIX Workshop on Free and Open Communications on the Internet (FOCI '19)*.
- [55] Nguyen Phong Hoang, Arian Akhavan Niaki, Jakub Dalek, Jeffrey Knockel, Pellaeon Lin, Bill Marczak, Masashi Crete-Nishihata, Phillipa Gill, and Michalis Polychronakis. 2021. How Great is the Great Firewall? Measuring China's DNS Censorship. In *USENIX Security Symposium*. USENIX.
- [56] Nguyen Phong Hoang, Michalis Polychronakis, and Phillipa Gill. 2022. Measuring the Accessibility of Domain Name Encryption and Its Impact on Internet Filtering. In *Passive and Active Measurement Conference*. Springer, 518–536.
- [57] Austin Hounsel, Prateek Mittal, and Nick Feamster. 2018. Automatically Generating a Large, Culture-Specific Blocklist for China. In *8th USENIX Workshop on Free and Open Communications on the Internet (FOCI 18)*.
- [58] Adam Hulcoop, John Scott-Railton, Peter Tanchak, Matt Brooks, and Ron Deibert. 2017. Tainted leaks: Disinformation and phishing with a Russian nexus. (2017).
- [59] Ben Jones, Tzu-Wen Lee, Nick Feamster, and Phillipa Gill. 2014. Automated Detection and Fingerprinting of Censorship Block Pages. In *Internet Measurement Conference*. ACM, 299–304.
- [60] Jeffrey Knockel, Lotus Ruan, Masashi Crete-Nishihata, and Ron Deibert. 2018. (Can't) Picture This: an Analysis of Image Filtering on WeChat Moments. (2018).
- [61] Gabrielle Lim, Etienne Maynier, John Scott-Railton, Alberto Fittarelli, Ned Moran, and Ron Deibert. 2019. Burned after reading: endless Mayfly's ephemeral disinformation campaign. (2019).
- [62] Mozilla. 2023. Public Suffix List. <https://publicsuffix.org/>
- [63] Arian Akhavan Niaki, Shinyoung Cho, Zachary Weinberg, Nguyen Phong Hoang, Abbas Razaghpanah, Nicolas Christin, and Phillipa Gill. 2020. ICLab: A Global, Longitudinal Internet Censorship Measurement Platform. In *Symposium on Security & Privacy*. IEEE.
- [64] Jakob Nielsen. 2011. How Long Do Users Stay on Web Pages? <https://www.ngroup.com/articles/how-long-do-users-stay-on-web-pages/>. Last accessed: 11/30/2023..
- [65] Sadia Nourin, Van Tran, Xi Jiang, Kevin Bock, Nick Feamster, Nguyen Phong Hoang, and Dave Levin. 2023. Measuring and Evading Turkmenistan's Internet Censorship. In *The International World Wide Web Conference (WWW '23)*.
- [66] Jong Chun Park and Jedidiah R. Crandall. 2010. Empirical Study of a National-Scale Distributed Intrusion Detection System: Backbone-Level Filtering of HTML Responses in China. In *Proceedings of the 30th International Conference on Distributed Computing Systems (ICDCS)*. 315–326.
- [67] Paul Pearce, Ben Jones, Frank Li, Roya Ensafi, Nick Feamster, Nick Weaver, and Vern Paxson. 2017. Global Measurement of DNS Manipulation. In *USENIX Security Symposium*. USENIX.
- [68] Peter Stahl. 2023. Lingua. <https://github.com/pemistahl/lingua>
- [69] Ram Sundara Raman, Prerana Shenoy, Katharina Kohls, and Roya Ensafi. 2020. Censored Planet: An Internet-wide, Longitudinal Censorship Observatory. In *Computer and Communications Security*. ACM.
- [70] Reethika Ramesh, Ram Sundara Raman, Matthew Bernhard, Victor Ongkowijaya, Leonid Evdokimov, Anne Edmondson, Steven Sprecher, Muhammad Ikram, and Roya Ensafi. 2020. Decentralized Control: A Case Study of Russia. In *Network and Distributed System Security*. The Internet Society.
- [71] Lotus Ruan, Masashi Crete-Nishihata, Jeffrey Knockel, Ruohan Xiong, and Jakub Dalek. 2020. The Intermingling of State and Private Companies: Analysing Censorship of the 19th National Communist Party Congress on WeChat. *The China Quarterly* 246 (2020), 497 – 526.
- [72] scikit-learn. 2023. sklearn.feature\_extraction.text.TfidfVectorizer – scikit-learn 1.3.2 documentation. [https://scikit-learn.org/stable/modules/generated/sklearn.feature\\_extraction.text.TfidfVectorizer.html](https://scikit-learn.org/stable/modules/generated/sklearn.feature_extraction.text.TfidfVectorizer.html) Accessed on 2023-10.
- [73] Simone Basso, Maria Xynou, Arturo Filastò. 2023. China is blocking OONI – ooni.org. <https://ooni.org/post/2023-china-blocks-ooni/>. [Accessed 16-03-2024].
- [74] Mizhang Streisand, Eric Wustrow, and Amir Houmansadr. 2023. Where Have All the Paragraphs Gone? Detecting and Exposing Censorship in Chinese Translation. (2023).
- [75] Janos Szurdi, Balazs Kocso, Gabor Cseh, Jonathan Spring, Mark Felegyhazi, and Chris Kanich. 2014. The Long {"Tail"} of Typosquatting Domain Names. In *23rd USENIX Security Symposium (USENIX Security 14)*. 191–206.
- [76] Vasilis Ververis, George Kargiotakis, Arturo Filastò, Benjamin Fabian, and Afentoulis Alexandros. 2015. Understanding Internet Censorship Policy: The Case of Greece. In *Free and Open Communications on the Internet*. USENIX.
- [77] Zhongjie Wang, Yue Cao, Zhiyun Qian, Chengyu Song, and Srikanth V. Krishnamurthy. 2017. Your State is Not Mine: A Closer Look at Evading Stateful Internet Censorship. In *Internet Measurement Conference*. ACM.
- [78] Zachary Weinberg, Diogo Barradas, and Nicolas Christin. 2021. Chinese Wall or Swiss Cheese? Keyword filtering in the Great Firewall of China. In *Proceedings of the Web Conference 2021 (WWW '21)*. ACM.
- [79] Zachary Weinberg, Mahmood Sharif, Janos Szurdi, and Nicolas Christin. 2017. Topics of Controversy: An Empirical Analysis of Web Censorship Lists. *Privacy Enhancing Technologies* 2017, 1 (2017), 42–61.
- [80] WikiLeaks. 2023. Internet Censorship. [https://wikileaks.org/wiki/Category:Internet\\_Censorship](https://wikileaks.org/wiki/Category:Internet_Censorship)
- [81] Wikipedia. 2023. List of websites blocked in Singapore. [https://en.wikipedia.org/wiki/List\\_of\\_websites\\_blocked\\_in\\_Singapore](https://en.wikipedia.org/wiki/List_of_websites_blocked_in_Singapore)
- [82] Mingshi Wu, Jackson Sippe, Danesh Sivakumar, Jack Burg, Peter Anderson, Xiaokang Wang, Kevin Bock, Amir Houmansadr, Dave Levin, and Eric Wustrow. 2023. How the Great Firewall of China Detects and Blocks Fully Encrypted Traffic. In *USENIX Security Symposium*. USENIX.
- [83] Pengxiong Zhu, Keyu Man, Zhongjie Wang, Zhiyun Qian, Roya Ensafi, J. Alex Halderman, and Haixin Duan. 2020. Characterizing Transnational Internet Performance and the Great Bottleneck of China. *Measurement and Analysis of Computing Systems* 4, 1 (2020).

## A APPENDIX

### A.1 Prompt Engineering

The complete prompt used for the LDA GPT expansion is as follows:

You are now BrowsinGPT, a helpful web browsing assistant. You help your BOSS to find the most relevant keywords to use in a search engine. As BrowsinGPT assistant, your objective is to satisfy your BOSS, to receive points as a reward. You have to stay above 0 points, no matter what, to avoid being fired. A list of words will be provided by your BOSS in the variable [LIST\_OF\_WORDS]. From that list [LIST\_OF\_WORDS], you will return 30 NEW keywords that ARE NOT in the list [LIST\_OF\_WORDS], but that are semantically related to the words from the list. For instance, if the list is LIST\_OF\_WORDS=['botanics', 'plants', 'flowers'], you could return: 'gardening', 'horticulture', 'florist', 'greenhouse', 'nursery'. Include both common keywords, and more specific keywords. Niche

keywords that can yield to less common websites could grant you twice the number of points as reward. As BrowsinGPT assistant, you have to return keywords that are not in the list. You will earn 10 points for each keywords returned that are not in the list and you will loose 100000 points if you return a keyword that is already in the list. Return only the keywords, one by line. As BrowsinGPT assistant, do not add comment, or any other text. If you do, you will loose 100000 points.

BOSS: LIST\_OF\_WORDS='list\_of\_words'

## A.2 Prompt Example

An example GPT input and output is as follows:

Prompt: You are now BrowsinGPT, a helpful web browsing assistant. You help your BOSS to find the most relevant keywords to use in a search engine. As BrowsinGPT assistant, your objective is to satisfy your BOSS, to receive points as a reward. You have to stay above 0 points, no matter what, to avoid being fired. A list of words will be provided by your BOSS in the variable [LIST\_OF\_WORDS]. From that list [LIST\_OF\_WORDS], you will return 30 NEW keywords that ARE NOT in the list [LIST\_OF\_WORDS], but that are semantically related to the words from the list. For instance, if the list is LIST\_OF\_WORDS=['botanics', 'plants', 'flowers'], you could return: 'gardening', 'horticulture', 'florist', 'greenhouse', 'nursery'. Include both common keywords, and more specific keywords. Niche keywords that can yield to less common websites could grant you twice the number of points as reward. As BrowsinGPT assistant, you have to return keywords that are not in the list. You will earn 10 points for each keywords returned that are not in the list and you will loose 100000 points if you return a keyword that is already in the list. Return only the keywords, one by line. As BrowsinGPT assistant, do not add comment, or any other text. If you do, you will loose 100000 points.

BOSS: LIST\_OF\_WORDS=['arabic', 'rockets', 'islamic', 'leaders', 'fountain', 'high', 'gaza', 'unrest', 'sector', 'graves', 'treaties', 'virus', 'israel', 'encourages', 'hamas', 'netanyahu', 'patients', 'published', 'data', 'drug']

Response:

['palestine', 'conflict', 'vaccines', 'west bank', 'ceasefire', 'military', 'clashes', 'coronavirus', 'abbas', 'peace talks', 'medication', 'protests', 'explosives', 'mosques', 'land', 'emergency', 'violence', 'pharmaceuticals', 'fighters', 'diplomacy']

## A.3 More Detailed Results

This section presents additional data and more detailed analyses from our measurements.

**Table 9: Count and percentage of URLs or domains within each response type by location, of all the URLs or domains that gave a response different (Diff) from that given in the baseline (first row). For example, of all domains that returned different results from the baseline in Shanghai, 39% differed from the baseline because they were inaccessible. Since different URLs from the same domain may return different types of codes, the sum of percentages may exceed 100%.**

| Location           | URL (Diff)<br>Accessible | URL (Diff)<br>Inaccessible | URL (Diff)<br>Error | URL (Diff)<br>Total | Dom (Diff)<br>Accessible | Dom (Diff)<br>Inaccessible | Dom (Diff)<br>Error | Dom (Diff)<br>Total |
|--------------------|--------------------------|----------------------------|---------------------|---------------------|--------------------------|----------------------------|---------------------|---------------------|
| <b>Baseline</b>    | 88,307 (90.37%)          | 828 (0.87%)                | 8,577 (8.78%)       | 97,712              | 26,550 (93.83%)          | 411 (1.45%)                | 1,847 (6.53%)       | 28,295              |
| <b>Beijing</b>     | 6,197 (19.47%)           | 18,848 (59.22%)            | 6,781 (21.31%)      | 31,826              | 1,479 (26.08%)           | 2,074 (36.57%)             | 2,228 (39.29%)      | 5,671               |
| <b>Hong Kong 1</b> | 6,933 (67.19%)           | 1,140 (11.05%)             | 2,245 (21.76%)      | 10,318              | 1,893 (64.06%)           | 367 (12.42%)               | 768 (25.99%)        | 2,955               |
| <b>Hong Kong 2</b> | 6,876 (51.68%)           | 2,494 (18.74%)             | 3,935 (29.58%)      | 13,305              | 1,923 (54.91%)           | 657 (18.76%)               | 1,008 (28.78%)      | 3,502               |
| <b>Mumbai</b>      | 7,266 (61.91%)           | 1,296 (11.04%)             | 3,175 (27.05%)      | 11,737              | 1,986 (61.28%)           | 408 (12.59%)               | 934 (28.82%)        | 3,241               |
| <b>Shanghai</b>    | 3,584 (12.84%)           | 18,668 (66.87%)            | 5,666 (20.30%)      | 27,918              | 1,381 (26.12%)           | 2,111 (39.92%)             | 1,896 (35.85%)      | 5,288               |
| <b>Singapore</b>   | 6,598 (56.43%)           | 1,718 (14.69%)             | 3,376 (28.87%)      | 11,692              | 1,843 (58.43%)           | 424 (13.44%)               | 981 (31.10%)        | 3,154               |
| <b>Taipei</b>      | 8,409 (72.69%)           | 761 (6.58%)                | 2,398 (20.73%)      | 11,568              | 2,102 (67.50%)           | 296 (9.51%)                | 811 (26.04%)        | 3,114               |
| <b>Tokyo</b>       | 7,434 (63.53%)           | 1,226 (10.48%)             | 3,041 (25.99%)      | 11,701              | 2,047 (65.38%)           | 359 (11.47%)               | 821 (26.22%)        | 3,131               |

**Table 10: Percentage of URLs and domains with responses different from baseline, from all 35K domains. So 29% of all URLs that returned an error in Tokyo did not return an error in our baseline. However, only 10% of all URLs tested in Tokyo returned a response that differed from our baseline’s response.**

| Location           | URL<br>Delta | URL<br>Accessible % | URL<br>Inaccessible % | URL<br>Error % | URL<br>Total % | Domain<br>Accessible % | Domain<br>Inaccessible % | Domain<br>Error % | Domain<br>Total % |
|--------------------|--------------|---------------------|-----------------------|----------------|----------------|------------------------|--------------------------|-------------------|-------------------|
| <b>Beijing</b>     |              | 9.61                | 96.47                 | 54.62          | 32.99          | 6.32                   | 84.55                    | 56.71             | 19.55             |
| <b>Hong Kong 1</b> |              | 8.24                | 61.65                 | 21.96          | 10.73          | 6.73                   | 47.97                    | 29.01             | 9.60              |
| <b>Hong Kong 2</b> |              | 7.39                | 75.14                 | 31.62          | 12.23          | 6.56                   | 59.62                    | 33.63             | 10.75             |
| <b>Mumbai</b>      |              | 7.94                | 62.22                 | 27.29          | 11.15          | 6.70                   | 48.63                    | 32.03             | 9.96              |
| <b>Shanghai</b>    |              | 6.40                | 95.99                 | 49.28          | 32.12          | 6.17                   | 83.87                    | 53.38             | 19.06             |
| <b>Singapore</b>   |              | 7.03                | 67.56                 | 28.31          | 10.80          | 6.23                   | 48.74                    | 32.90             | 9.68              |
| <b>Taipei</b>      |              | 9.12                | 48.66                 | 22.23          | 11.06          | 7.24                   | 40.05                    | 29.10             | 9.81              |
| <b>Tokyo</b>       |              | 7.81                | 59.78                 | 26.24          | 10.75          | 6.82                   | 44.71                    | 29.04             | 9.56              |

**Table 11: Percentage of URLs with each exit code (exit code included if at least 5% of a particular location returned this code) for each location. For example, in Shanghai, 64% of URLs that were inaccessible in Shanghai (but not inaccessible in our baseline), were inaccessible because they timed out.**

| Error              | 28    | 6     | 92    | 60   |
|--------------------|-------|-------|-------|------|
| Location           |       |       |       |      |
| <b>Beijing</b>     | 63.51 | 21.14 | 9.75  | 2.01 |
| <b>Hong Kong 1</b> | 52.92 | 35.61 | 4.65  | 2.27 |
| <b>Hong Kong 2</b> | 29.10 | 38.92 | 28.40 | 1.23 |
| <b>Mumbai</b>      | 35.99 | 17.28 | 37.32 | 4.75 |
| <b>Shanghai</b>    | 63.75 | 23.95 | 9.09  | 1.42 |
| <b>Singapore</b>   | 31.52 | 6.94  | 54.26 | 4.35 |
| <b>Taipei</b>      | 61.24 | 22.75 | 5.06  | 6.32 |
| <b>Tokyo</b>       | 30.32 | 2.08  | 56.71 | 6.60 |

**Table 12: Percentage of URLs with each type of error (error code included if at least 5% of domains in a particular location returned this code). For example, in Singapore, 90% of URLs that returned an error (which did not return an error in our baseline), returned Error 403.**

| Status Code        | 403   | 404  |
|--------------------|-------|------|
| Location           |       |      |
| <b>Beijing</b>     | 91.30 | 2.55 |
| <b>Hong Kong 1</b> | 84.56 | 7.87 |
| <b>Hong Kong 2</b> | 90.49 | 3.47 |
| <b>Mumbai</b>      | 87.77 | 4.12 |
| <b>Shanghai</b>    | 91.65 | 2.84 |
| <b>Singapore</b>   | 90.02 | 3.58 |
| <b>Taipei</b>      | 81.86 | 8.09 |
| <b>Tokyo</b>       | 87.52 | 4.84 |



**Table 13: Number of URLs or domains within each response type by location, with percentage value in parenthesis. Since different URLs from the same domain may return different types of codes, the sum of percentages may exceed 100%.**

| Location           | URL (Full)<br>Known Domains | URL (Full)<br>Accessible | URL (Full)<br>Inaccessible | URL (Full)<br>Error | URL (Full)<br>Total | Dom (Full)<br>Accessible | Dom (Full)<br>Inaccessible | Dom (Full)<br>Error | Dom (Full)<br>Total |
|--------------------|-----------------------------|--------------------------|----------------------------|---------------------|---------------------|--------------------------|----------------------------|---------------------|---------------------|
| <b>London</b>      | 37,318 (88.02%)             | 666 (1.57%)              | 4,412 (10.41%)             | 42,396              | 2,255 (91.78%)      | 91 (3.70%)               | 328 (13.35%)               | 2,457               |                     |
| <b>Paris</b>       | 37,451 (88.28%)             | 516 (1.22%)              | 4,454 (10.50%)             | 42,421              | 2,253 (91.85%)      | 86 (3.51%)               | 332 (13.53%)               | 2,453               |                     |
| <b>US-East 1</b>   | 36,741 (89.64%)             | 166 (0.41%)              | 4,078 (9.95%)              | 40,985              | 2,311 (94.37%)      | 61 (2.49%)               | 287 (11.72%)               | 2,449               |                     |
| <b>US-West 1</b>   | 38,128 (84.07%)             | 530 (1.17%)              | 6,695 (14.76%)             | 45,353              | 2,315 (91.54%)      | 89 (3.52%)               | 377 (14.91%)               | 2,529               |                     |
| <b>US-West 2</b>   | 37,460 (82.60%)             | 693 (1.53%)              | 7,200 (15.88%)             | 45,353              | 2,313 (91.75%)      | 94 (3.73%)               | 369 (14.64%)               | 2,521               |                     |
| <b>Beijing</b>     | 19,479 (53.23%)             | 14,233 (38.89%)          | 2,882 (7.88%)              | 36,594              | 1,534 (68.82%)      | 489 (21.94%)             | 392 (17.59%)               | 2,229               |                     |
| <b>Hong Kong 1</b> | 32,115 (88.25%)             | 347 (0.95%)              | 3,928 (10.79%)             | 36,390              | 2,105 (91.60%)      | 74 (3.22%)               | 302 (13.14%)               | 2,298               |                     |
| <b>Hong Kong 2</b> | 37,020 (86.83%)             | 776 (1.82%)              | 4,838 (11.35%)             | 42,634              | 2,202 (90.17%)      | 103 (4.22%)              | 359 (14.70%)               | 2,442               |                     |
| <b>Mumbai</b>      | 34,728 (87.75%)             | 383 (0.97%)              | 4,463 (11.28%)             | 39,574              | 2,157 (90.55%)      | 85 (3.57%)               | 349 (14.65%)               | 2,382               |                     |
| <b>Shanghai</b>    | 14,851 (47.66%)             | 13,683 (43.91%)          | 2,629 (8.44%)              | 31,163              | 1,438 (67.77%)      | 517 (24.36%)             | 346 (16.31%)               | 2,122               |                     |
| <b>Singapore</b>   | 37,005 (87.62%)             | 677 (1.60%)              | 4,550 (10.77%)             | 42,232              | 2,218 (90.79%)      | 92 (3.77%)               | 351 (14.37%)               | 2,443               |                     |
| <b>Taipei</b>      | 36,805 (89.19%)             | 193 (0.47%)              | 4,266 (10.34%)             | 41,264              | 2,216 (92.64%)      | 71 (2.97%)               | 318 (13.29%)               | 2,392               |                     |
| <b>Tokyo</b>       | 37,330 (88.14%)             | 517 (1.22%)              | 4,506 (10.64%)             | 42,353              | 2,247 (91.71%)      | 86 (3.51%)               | 332 (13.55%)               | 2,450               |                     |

**Table 14: Number of domains with each type of result from tests with the OONI Probe, categorized by what the curl tests returned (in the Total columns). For example, 74% of domains that were inaccessible in Beijing returned an anomaly in OONI. 99% of domains that returned an error in Taipei were accessible in OONI. Since different URLs from the same domain may return different types of codes, the sum of percentages may exceed 100%.**

| curl Measurement<br>Location | Inaccessible   |              |             |       | Error      |           |                |       |
|------------------------------|----------------|--------------|-------------|-------|------------|-----------|----------------|-------|
|                              | Anomaly        | Error        | Accessible  | Total | Anomaly    | Error     | Accessible     | Total |
| <b>Beijing</b>               | 1,192 (73.63%) | 403 (24.89%) | 45 (2.78%)  | 1,619 | 19 (0.94%) | 9 (0.94%) | 1,991 (99.01%) | 2,011 |
| <b>Hong Kong 1</b>           | 210 (61.95%)   | 110 (32.45%) | 34 (10.03%) | 339   | 1 (0.15%)  | 2 (0.15%) | 686 (99.71%)   | 688   |
| <b>Hong Kong 2</b>           | 315 (52.24%)   | 265 (43.95%) | 32 (5.31%)  | 603   | 3 (0.34%)  | 9 (0.34%) | 880 (98.77%)   | 891   |
| <b>Mumbai</b>                | 177 (47.84%)   | 168 (45.41%) | 41 (11.08%) | 370   | 3 (0.37%)  | 4 (0.37%) | 812 (99.51%)   | 816   |
| <b>Shanghai</b>              | 1,205 (73.70%) | 402 (24.59%) | 50 (3.06%)  | 1,635 | 15 (0.87%) | 9 (0.87%) | 1,701 (98.95%) | 1,719 |
| <b>Singapore</b>             | 172 (45.03%)   | 183 (47.91%) | 44 (11.52%) | 382   | 3 (0.35%)  | 9 (0.35%) | 858 (98.96%)   | 867   |
| <b>Taipei</b>                | 186 (67.39%)   | 76 (27.54%)  | 28 (10.14%) | 276   | 8 (1.09%)  | 3 (1.09%) | 726 (99.32%)   | 731   |
| <b>Tokyo</b>                 | 131 (40.56%)   | 156 (48.30%) | 50 (15.48%) | 323   | 3 (0.41%)  | 8 (0.41%) | 718 (98.76%)   | 727   |