

THE EMERGENCE OF A LANTHANIDE-RICH KILONOVA FOLLOWING THE MERGER OF TWO NEUTRON STARS

N. R. TANVIR,¹ A. J. LEVAN,² C. GONZÁLEZ-FERNÁNDEZ,³ O. KOROBKIN,⁴ I. MANDEL,⁵ S. ROSSWOG,⁶ J. HJORTH,⁷ P. D'AVANZO,⁸ A. S. FRUCHTER,⁹ C. L. FRYER,⁴ T. KANGAS,⁹ B. MILVANG-JENSEN,¹⁰ S. ROSETTI,¹ D. STEEGHS,² R. T. WOLLAEGER,⁴ Z. CANO,¹¹ C. M. COPPERWHEAT,¹² S. COVINO,⁸ V. D'ELIA,^{13,14} A. DE UGARTE POSTIGO,^{11,10} P. A. EVANS,¹ W. P. EVEN,⁴ S. FAIRHURST,¹⁵ R. FIGUERA JAIMES,¹⁶ C. J. FONTES,⁴ Y. I. FUJII,^{17,18} J. P. U. FYNBO,¹⁹ B. P. GOMPERTZ,² J. GREINER,²⁰ G. HODOSAN,²¹ M. J. IRWIN,³ P. JAKOBSSON,²² U. G. JØRGENSEN,²³ D. A. KANN,¹¹ J. D. LYMAN,² D. MALESANI,¹⁹ R. G. MCMAHON,³ A. MELANDRI,⁸ P.T. O'BRIEN,¹ J. P. OSBORNE,¹ E. PALAZZI,²⁴ D. A. PERLEY,¹² E. PIAN,²⁵ S. PIRANOMONTE,¹⁴ M. RABUS,²⁶ E. ROL,²⁷ A. ROWLINSON,^{28,29} S. SCHULZE,³⁰ P. SUTTON,¹⁵ C.C. THÖNE,¹¹ K. ULACZYK,² D. WATSON,¹⁹ K. WIERSEMA,¹ AND R.A.M.J. WIJERS²⁸

¹*University of Leicester, Department of Physics & Astronomy and Leicester Institute of Space & Earth Observation, University Road, Leicester, LE1 7RH, United Kingdom*

²*Department of Physics, University of Warwick, Coventry, CV4 7AL, United Kingdom*

³*Institute of Astronomy, University of Cambridge, Madingley Road, Cambridge, CB3 0HA, United Kingdom*

⁴*Computational Methods Group (CCS-2), Los Alamos National Laboratory, P.O. Box 1663, Los Alamos, NM, 87545, USA*

⁵*Birmingham Institute for Gravitational Wave Astronomy and School of Physics and Astronomy, University of Birmingham, Birmingham, B15 2TT, UK*

⁶*The Oskar Klein Centre, Department of Astronomy, AlbaNova, Stockholm University, SE-106 91 Stockholm, Sweden*

⁷*DARK, Niels Bohr Institute, University of Copenhagen, Juliane Maries Vej 30, 2100 Copenhagen Ø, Denmark*

⁸*INAF, Osservatorio Astronomico di Brera, Via E. Bianchi 46, I-23807 Merate (LC), Italy*

⁹*Space Telescope Science Institute, 3700 San Martin Drive, Baltimore, MD 21218, USA*

¹⁰*Dark Cosmology Centre, Niels Bohr Institute, University of Copenhagen, Juliane Maries Vej 30, 2100 Copenhagen Ø, Denmark*

¹¹*Instituto de Astrofísica de Andalucía (IAA-CSIC), Glorieta de la Astronomía s/n, 18008 Granada, Spain*

¹²*Astrophysics Research Institute, Liverpool John Moores University, Liverpool Science Park IC2, 146 Brownlow Hill, Liverpool L3 5RF, UK*

¹³*Space Science Data Center, ASI, Via del Politecnico, s.n.c., 00133, Roma, Italy*

¹⁴*INAF, Osservatorio Astronomico di Roma, Via di Frascati, 33, I-00078 Monteporzio Catone, Italy*

¹⁵*School of Physics and Astronomy, Cardiff University, Cardiff, UK*

¹⁶*SUPA, School of Physics & Astronomy, University of St Andrews, North Haugh, St Andrews KY16 9SS, UK*

¹⁷*Niels Bohr Institute & Centre for Star and Planet Formation, University of Copenhagen Øster Voldgade 5, 1350 - Copenhagen, Denmark*

¹⁸*Institute for Advanced Research, Nagoya University, Furo-cho, Chikusa-ku, Nagoya, 464-8601, Japan*

¹⁹*Niels Bohr Institute, University of Copenhagen, Juliane Maries Vej 30, 2100 Copenhagen Ø, Denmark*

²⁰*Max-Planck-Institut für extraterrestrische Physik, 85740 Garching, Giessenbachstr. 1, Germany*

²¹*Instituto de Astrofísica de Andalucía (IAA-CSIC), Glorieta de la Astronomía s/n, E-18008, Granada, Spain*

²²*Centre for Astrophysics and Cosmology, Science Institute, University of Iceland, Dunhagi 5, 107 Reykjavík, Iceland*

²³*Niels Bohr Institute & Centre for Star and Planet Formation, University of Copenhagen Øster Voldgade 5, 1350 - Copenhagen, Denmark*

²⁴*INAF, Istituto di Astrofisica Spaziale e Fisica Cosmica, Via Gobetti 101, I-40129 Bologna, Italy*

²⁵*INAF, Institute of Space Astrophysics and Cosmic Physics, Via Gobetti 101, I-40129 Bologna, Italy*

²⁶*Instituto de Astrofísica, Pontificia Universidad Católica de Chile, Av. Vicuña Mackenna 4860, 7820436 Macul, Santiago, Chile*

²⁷*School of Physics and Astronomy, Monash University, PO Box 27, Clayton, Victoria 3800, Australia*

²⁸*Anton Pannekoek Institute, University of Amsterdam, Science Park 904, 1098 XH Amsterdam, the Netherlands*

²⁹*ASTRON, the Netherlands Institute for Radio Astronomy, Postbus 2, 7990 AA Dwingeloo, the Netherlands*

³⁰*Department of Particle Physics and Astrophysics, Weizmann Institute of Science, Rehovot 761000, Israel*

Submitted to ApJL

ABSTRACT

We report the discovery and monitoring of the near-infrared counterpart (AT2017gfo) of a binary neutron-star merger event detected as a gravitational wave source by Advanced LIGO/Virgo (GW170817) and as a short gamma-ray burst by *Fermi* GBM and *Integral* SPI-ACS (GRB 170817A). The evolution of the transient light is consistent with predictions for the behaviour of a “kilonova/macronova”, powered by the radioactive decay of massive neutron-rich nuclides created via r-process nucleosynthesis in the neutron-star ejecta. In particular, evidence for this scenario is found from broad features seen in *Hubble Space Telescope* infrared spectroscopy, similar to those predicted for lanthanide dominated ejecta, and the much slower evolution in the near-infrared K_s -band compared to the optical. This indicates that the late-time light is dominated by high-opacity lanthanide-rich ejecta, suggesting nucleosynthesis to the 3rd r-process peak (atomic masses $A \approx 195$). This discovery confirms that neutron star mergers produce kilonova/macronovae and that they are at least a major – if not the dominant – site of rapid neutron capture nucleosynthesis in the universe.

Keywords: stars: neutron — gravitational waves — nuclear reactions, nucleosynthesis, abundances

1. INTRODUCTION

When compact binary star systems merge, they release copious amounts of energy in the form of gravitational waves (Abbott et al. 2016). If the system is either a binary neutron star (BNS) or a neutron star and stellar mass black hole (NSBH), the merger is expected to be accompanied by various electromagnetic phenomena. In particular, systems of this sort have long been thought to be the progenitors of short-duration gamma-ray bursts (sGRB; e.g. Eichler et al. 1989; Nakar 2007), whilst their neutron-rich ejecta should give rise to a so-called “kilonova” or “macronova” (KN/MN) explosion (Li & Paczyński 1998; Kulkarni 2005; Rosswog 2005; Metzger et al. 2010). Short GRBs are bright and conspicuous high-energy events. However, since they are thought to be jetted systems, they are expected to be observed for only a subset of such mergers, as the most intense emission from a given merger will usually not intersect our line of sight. KN/MN, which are powered by radioactive decay, although considerably fainter, emit more isotropically (e.g. Grossman et al. 2014) and are longer lived than sGRB afterglows. Thus, they are generally considered to provide the best prospects for electromagnetic (EM) counterparts to gravitational-wave detections (e.g. Metzger & Berger 2012; Kelley et al. 2013; Fernandez & Metzger 2016; Rosswog et al. 2017).

However, it has been argued that the high opacity of newly synthesised heavy elements in the KN/MN ejecta, particularly lanthanides and actinides, will render them faint in the optical, with emission instead appearing primarily in the near-infrared on timescales of several days (Kasen et al. 2013; Barnes & Kasen 2013). This connects them closely to cosmic nucleosynthesis. The “rapid neutron capture” or “r-process” is responsible for about half of the elements heavier than iron and had traditionally been attributed to core collapse supernovae (Burbidge et al. 1957). A number of recent studies, however, have disfavoured supernovae since their conditions were found unsuitable for producing at least the heaviest elements of the “platinum peak” near atomic mass $A = 195$. At the same time, neutron star mergers have gained increasing attention as a major r-process production site. Lattimer & Schramm (1974) first discussed such compact binary mergers as an r-process site and since the first nucleosynthesis calculations (Rosswog et al. 1998; Freiburghaus et al. 1999) a slew of studies (e.g. Goriely et al. 2011; Kobrin et al. 2012; Just et al. 2015; Mendoza-Temis et al. 2015) has confirmed their suitability for the production of the heaviest elements in the Universe.

To date, the most compelling evidence in support of this scenario was provided by the observation of excess infrared light (rest frame $\lambda \sim 1.2 \mu\text{m}$) at the location of

a sGRB about a week (in the rest frame) after the burst occurred (sGRB 130603B; Tanvir et al. 2013; Berger et al. 2013). Subsequent work has uncovered possible “kilonova” components in several other sGRBs (Yang et al. 2015; Jin et al. 2015, 2016), although other late-time emission processes cannot be ruled out, and the fact that in these instances the excess was in the rest frame optical bands suggested it did not originate in lanthanide-rich ejecta.

While the initial focus has been on the extremely neutron-rich, low electron fraction (Y_e), “tidal” ejecta component, recent studies (Perego et al. 2014; Wanajo et al. 2014; Just et al. 2015; Radice et al. 2016) have highlighted that this material is likely complemented by higher Y_e material that still undergoes r-process nucleosynthesis, but does not produce the heaviest elements (such as gold or platinum) in the 3rd r-process peak. This higher Y_e -material results from either shocks, neutrino-driven winds and/or the unbinding of the accretion torus that is formed in the merger. Being free of lanthanides, this material possesses lower opacities and produces earlier and bluer optical transients (e.g. Metzger & Fernández 2014; Kasen et al. 2015). Geometrically, the low- Y_e , high opacity matter is ejected preferentially in the binary orbital plane, while the higher- Y_e , low opacity ejecta is concentrated towards the binary rotation axis. Existing numerical studies suggest that dynamical ejecta have higher velocities ($> 0.1c$; e.g. Kasen et al. 2015; Rosswog et al. 2017) and could – if viewed edge-on – obscure the wind-type ejecta. Therefore, significant viewing-angle effects are expected for the EM signatures of neutron-star mergers.

Here we present the optical and infrared light curve of an explosive transient seen in the hours and days following the detection of a BNS merger by LIGO/Virgo. We also present optical and near-infrared spectra of the transient. The data show a marked colour change from blue to red on a time-scale of days as well as conspicuous spectral features, strongly indicative of a kilonova showing both rapidly evolving blue and more slowly evolving red components.

We use AB magnitudes throughout and, except where otherwise stated, correct for Milky Way foreground extinction according to $A_V = 0.338$ from Schlafly & Finkbeiner (2011).

2. OBSERVATIONS

The discovery of GW 170817 by LIGO was announced to electromagnetic follow-up partners shortly after the trigger time of 12:41:04 UT on 17 Aug 2017 (LIGO & Virgo collaboration 2017a). The potential importance of this event was immediately realised due to its tem-

poral and (within the large error bounds) spatial coincidence with a short-duration GRB (170817A) detected by *Fermi*/GBM at 12:41:06.47 UT (von Kienlin et al. 2017, Goldstein et al. subm.) and also *INTEGRAL*/SPI-ACS (Savchenko et al. 2017, Savchenko et al. subm.). The existence of a short gamma-ray signal could be interpreted as requiring a close to pole-on viewing angle, but the absence of a normal GRB afterglow in subsequent monitoring (e.g. in X-rays; Evans et al. 2017) instead suggests the possibility of some kind of off-axis emission mechanism, such as may be produced by a shocked cocoon around the primary jet (e.g. Lazzati et al. 2017; Gottlieb et al. 2017).

2.1. Imaging

We triggered observations with the European Southern Observatory (ESO) Visible and Infrared Survey Telescope for Astronomy (VISTA; Sutherland et al. 2015) covering two fields within the GW error region and containing high densities of galaxies in the plausible distance regime to have produced such a signal (LIGO & Virgo collaboration 2017b). Observations began in Chilean twilight at 23:24 UT using the Y ($1.02\ \mu\text{m}$), J ($1.25\ \mu\text{m}$) and K_s ($2.15\ \mu\text{m}$) filters. In the second field we identified a bright new point source, visible in all three filters, which was not apparent in prior imaging of the field obtained as part of the VISTA Hemisphere Survey (McMahon et al. 2013). These images were processed using a tailored version of the VISTA Data Flow System that follows the standard reduction path described in González-Fernández et al. (2017) but allows for quick processing of data by using the most current set of calibration frames (mainly flat fields) available at the time. The sky location of the transient was $\text{RA}(2000) = 13:09:48.09$, $\text{Dec.}(2000) = -23:22:53.3$, approximately $10''$ from the centre of the S0 galaxy NGC 4993 (Figure 1). Contemporaneous observations made independently with several optical telescopes also revealed a new source at this location (Coulter et al. 2017; Allam 2017; Yang et al. 2017), which was designated AT2017gfo (also referred to as SSS17a).

Subsequently we monitored AT2017gfo with VISTA at roughly nightly cadence until the field became too difficult to observe due to its proximity to the Sun, after ~ 25 days. At later epochs, observations were restricted to the K_s -band, which is least affected by twilight observing.

Additionally, we imaged the field with the ESO Very Large Telescope (VLT), the *Hubble Space Telescope* (*HST*) and the Danish 1.5 m Telescope, including optical observations (a full list of observations and description of photometric measurements is given in Table 1). VLT

observations were taken with VIMOS and HAWK-I in the optical (r, z), and infrared (K) bands. Observations were processed through *esorex* in a standard fashion. *HST* observations were obtained in the optical (F475W, F606W and F814W) and IR (F110W & F160W) reduced using *astrodrizzle* to combine, distortion correction and cosmic-ray reject individual images. The images were ultimately drizzled to plate scales of $0.025''\text{pixel}^{-1}$ (for UVIS) and $0.07''\text{pixel}^{-1}$ (for the IR).

For each image, the light from the host galaxy was modeled and subtracted using custom routines, to aid photometry of the transient, which was performed using the *GAIA* software¹. The ground-based J - and K_s -bands were calibrated to the 2MASS² stars in the field, while the Y -band was calibrated via the relations given in González-Fernández et al. (2017). The optical filters were calibrated to the PanSTARRS³ scale. The *HST* photometry used the standard WFC3 calibrations⁴, apart from the F110W observations which were also calibrated to the J -band to aid comparison with the other J -band photometry.

Over the first several days AT2017gfo exhibited marked colour evolution from blue to red (Figures 2 & 3). Following a slow rise within the first day or so, the optical light declined rapidly from a peak in the first 36 hr, and proceeded to follow an approximately exponential decline (half-life in r -band ≈ 40 hr). The Y - and J -band light curves track each other closely, and again decline following a peak in the first ~ 36 hr. By contrast, the K_s -band, exhibits a much broader peak than the optical, varying by only $\approx 20\%$ in flux from about 30 hr to 6 d post-merger.

Although there is some evidence for dust lanes in the galaxy, its early-type nature and the absence of host absorption lines (Section 2.2) suggests little dust extinction. Furthermore, the transient is located away from these obviously dusty regions (see Levan et al. in prep. for details of host morphology and transient location). This is supported by the linear polarimetry of the transient, which shows very low levels of polarisation (Covino et al. 2017, Nature Astronomy in press), implying a line of sight dust column in the host galaxy of $E(B - V) \lesssim 0.2$ (assuming a Milky Way like relation between $E(B - V)$ and linear polarisation). Thus we only correct the photometry for dust extinction in the

¹ <http://star-www.dur.ac.uk/~pdraper/gaia/gaia.html>

² <http://irsa.ipac.caltech.edu/Missions/2mass.html>

³ <http://archive.stsci.edu/panstarrs/>

⁴ http://www.stsci.edu/hst/wfc3/phot_zp_lbn

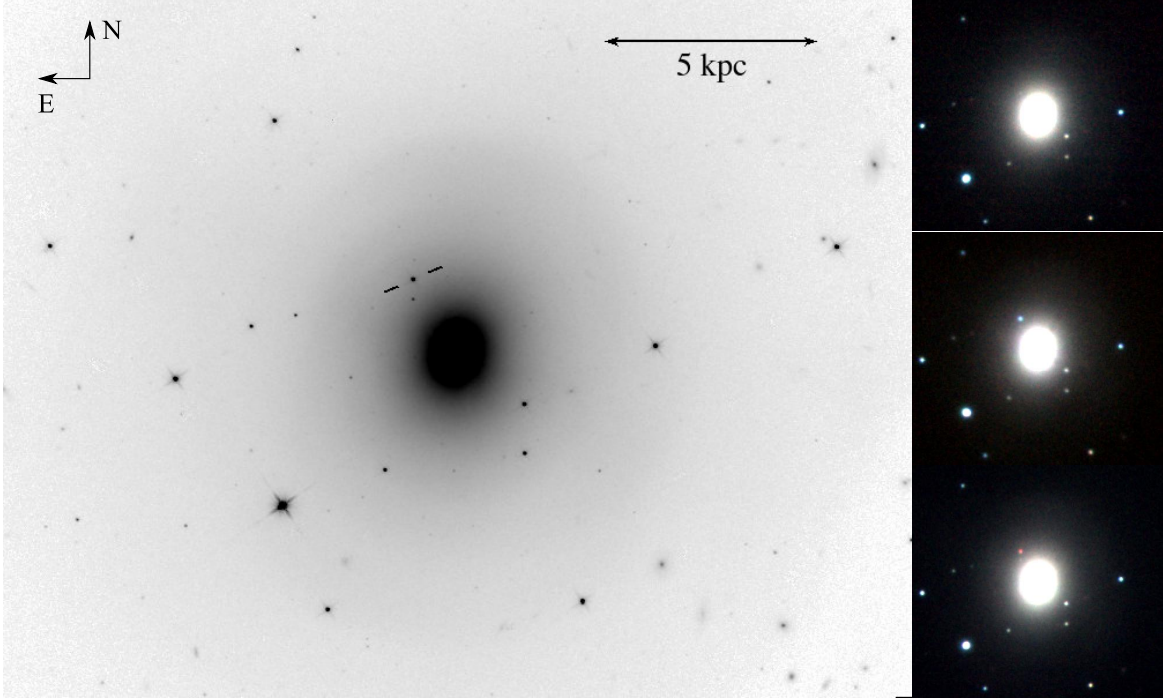


Figure 1. Main panel shows the first epoch F110W *HST*/WFC3-IR image of the field of AT2017gfo indicating its location within NGC 4993. The physical scale assuming a distance of 40 Mpc is shown. The sequence of panels on the right show VISTA imaging (RGB rendition created from Y, J, K_s images) from pre-discovery (2014; top), discovery (middle) and at 8.5 days post-merger as the transient was fading and becoming increasingly red (bottom).

Milky Way. The measured peak apparent magnitudes are $Y_{AB,0} = 17.22$ and $K_{AB,0} = 17.54$.

Table 1 (*continued*)

Table 1. Optical and near-IR photometry of the AT2017gfo source

Δt (d)	t_{exp} (s)	Telescope/Camera	Filter	AB_0	Δt (d)	t_{exp} (s)	Telescope/Camera	Filter	AB_0
(1)	(2)	(3)	(4)	(5)	(1)	(2)	(3)	(4)	(5)
					2.459	150	VLT/DK1.5	i	18.37 ± 0.03
					11.428	560	HST/WFC3-UVIS	F814W	22.32 ± 0.02
					2.461	150	DK1.5	z	18.01 ± 0.13
8.116	520	HST/WFC3-UVIS	F475W	23.14 ± 0.02	4.451	240	VLT/VIMOS	z	18.73 ± 0.01
11.300	520	HST/WFC3-UVIS	F475W	24.08 ± 0.05	8.443	400	VLT/VIMOS	z	20.28 ± 0.03
11.411	600	HST/WFC3-UVIS	F475W	23.96 ± 0.05	9.445	400	VLT/VIMOS	z	20.85 ± 0.04
1.44	30	VLT/FORS	r	17.69 ± 0.02	9.462	60	VLT/FORS	z	20.69 ± 0.11
2.44	10	VLT/FORS	r	18.77 ± 0.04	13.440	480	VLT/VIMOS	z	22.30 ± 0.28
3.45	60	VLT/FORS	r	19.28 ± 0.01	19.463	720	VLT/VIMOS	z	23.37 ± 0.48
4.46	240	VLT/VIMOS	r	19.86 ± 0.01	0.49	120	VISTA/VIRCAM	Y	17.46 ± 0.01
5.44	20	VLT/FORS	r	20.39 ± 0.03	1.47	120	VISTA/VIRCAM	Y	17.23 ± 0.01
8.46	600	VLT/VIMOS	r	21.75 ± 0.05	2.47	120	VISTA/VIRCAM	Y	17.51 ± 0.02
9.46	600	VLT/VIMOS	r	22.20 ± 0.04	3.46	120	VISTA/VIRCAM	Y	17.76 ± 0.01
10.46	1200	VLT/VIMOS	r	22.45 ± 0.07	4.46	120	VISTA/VIRCAM	Y	18.07 ± 0.02
11.44	360	HST/WFC3-UVIS	F606W	23.09 ± 0.03	6.47	120	VISTA/VIRCAM	Y	18.71 ± 0.04
12.44	1200	VLT/VIMOS	r	23.12 ± 0.31	7.47	120	VISTA/VIRCAM	Y	19.24 ± 0.07

Table 1 continued

Table 1 continued

Table 1 (*continued*)

Δt (d)	t_{exp} (s)	Telescope/Camera	Filter	AB_0
(1)	(2)	(3)	(4)	(5)
8.46	120	VISTA/VIRCAM	Y	19.67 ± 0.09
9.46	120	VISTA/VIRCAM	Y	20.09 ± 0.14
0.48	120	VISTA/VIRCAM	Y	17.88 ± 0.03
0.51	120	VISTA/VIRCAM	Y	17.82 ± 0.03
1.46	120	VISTA/VIRCAM	Y	17.45 ± 0.01
2.46	120	VISTA/VIRCAM	Y	17.66 ± 0.02
3.46	120	VISTA/VIRCAM	Y	17.86 ± 0.02
4.46	120	VISTA/VIRCAM	Y	18.08 ± 0.03
4.79	298	HST/WFC3-IR	F110W	18.26 ± 0.01
6.47	120	VISTA/VIRCAM	Y	18.74 ± 0.04
7.24	298	HST/WFC3-IR	F110W	19.06 ± 0.01
7.46	120	VISTA/VIRCAM	Y	19.07 ± 0.08
8.45	120	VISTA/VIRCAM	Y	19.69 ± 0.09
9.45	120	VISTA/VIRCAM	Y	20.06 ± 0.14
10.46	120	VISTA/VIRCAM	Y	20.94 ± 0.35
10.55	298	HST/WFC3-IR	F110W	20.82 ± 0.02
11.46	120	VISTA/VIRCAM	Y	21.16 ± 0.40
4.923	298	HST/WFC3-IR	F160W	18.063 ± 0.03
9.427	298	HST/WFC3-IR	F160W	19.600 ± 0.06
10.619	298	HST/WFC3-IR	F160W	20.279 ± 0.09
0.47	120	VISTA/VIRCAM	K_s	18.62 ± 0.05
0.50	120	VISTA/VIRCAM	K_s	18.64 ± 0.06
1.46	120	VISTA/VIRCAM	K_s	17.77 ± 0.02
2.45	120	VISTA/VIRCAM	K_s	17.67 ± 0.03
3.45	120	VISTA/VIRCAM	K_s	17.54 ± 0.02
4.45	120	VISTA/VIRCAM	K_s	17.60 ± 0.02
6.46	120	VISTA/VIRCAM	K_s	17.84 ± 0.03
7.45	120	VISTA/VIRCAM	K_s	17.95 ± 0.04
8.45	120	VISTA/VIRCAM	K_s	18.25 ± 0.03
9.45	120	VISTA/VIRCAM	K_s	18.49 ± 0.05
10.45	120	VISTA/VIRCAM	K_s	18.74 ± 0.06
12.46	120	VISTA/VIRCAM	K_s	19.34 ± 0.08
14.46	120	VISTA/VIRCAM	K_s	20.02 ± 0.13
17.45	780	VLT/HAWKI	K_s	20.77 ± 0.13
21.44	1320	VLT/HAWKI	K_s	21.46 ± 0.08
25.44	600	VLT/HAWKI	K_s	22.06 ± 0.22

NOTE—Column (1) start time of observation with respect to gravitational wave trigger time. <https://github.com/gbrammer/grizli>; development in progress

The distance to NGC 4993 is not well established. The heliocentric velocity is 2930 km s^{-1} ($z \approx 0.0098$; Levan et al. submitted), and here we take the distance to be $d = 40 \text{ Mpc}$ (distance modulus $\mu = 33.01$). Thus the peak absolute magnitudes from our measurements are $M_{Y,0} = -15.79$ and $M_{K,0} = -15.47$.

2.2. Spectroscopy

We observed AT2017gfo with the MUSE integral field spectrograph on the VLT, which provides optical spectroscopy of both the transient and also the surrounding galaxy (a more detailed description of these data and the analysis of the environment is presented in Levan et al. submitted).

Later spectroscopy was obtained with the *Hubble Space Telescope* (*HST*) using the Wide-Field Camera 3 Infrared channel (WFC3-IR), with both available grisms, G102 and G141. These observations were pre-reduced by the WFC3 pipeline. The pipeline products were astrometrically calibrated and flat-field corrected, and the diffuse sky background subtracted, using the python-based package `grizli`⁵. The significant background contamination, caused by the bright host galaxy, was fitted with a two-dimensional polynomial model in a region around the target spectrum, then subtracted, using `astropy` (Astropy Collaboration et al. 2013). The `grizli` package was then used to optimally extract and combine the spectra from individual exposures. We confirm these features are robust by comparing the results to extractions from the standard aXe software.

The spectroscopic observations are summarised in Table 2, and the spectra are plotted in Figure 4. The first spectrum at roughly 1.5 d post-merger peaks around $0.6 \mu\text{m}$ in the optical. Subsequently, the *HST* spectra show the behaviour in the near-infrared, and show that by 5 days the spectrum is dominated by a prominent peak at $\sim 1.1 \mu\text{m}$. Lesser peaks are apparent at $\sim 1.4 \mu\text{m}$ and $\sim 1.6 \mu\text{m}$, and a weak peak at $\sim 1.22 \mu\text{m}$. The breadth of the features is reminiscent of broad-line supernova spectra (e.g. Hjorth et al. 2003), and their positions, particularly of the $\sim 1.1 \mu\text{m}$ peak, matches qualitatively the model spectra of Kasen et al. (2013) which adopted opacity based on the lanthanide neodymium. These features appear to be present through the sequence, although they diminish in significance and move towards slightly longer wavelengths. This is consistent with the photosphere moving deeper with time to slower moving ejecta as the faster moving outer layers cool and recombine. Overall the spectra match well those seen

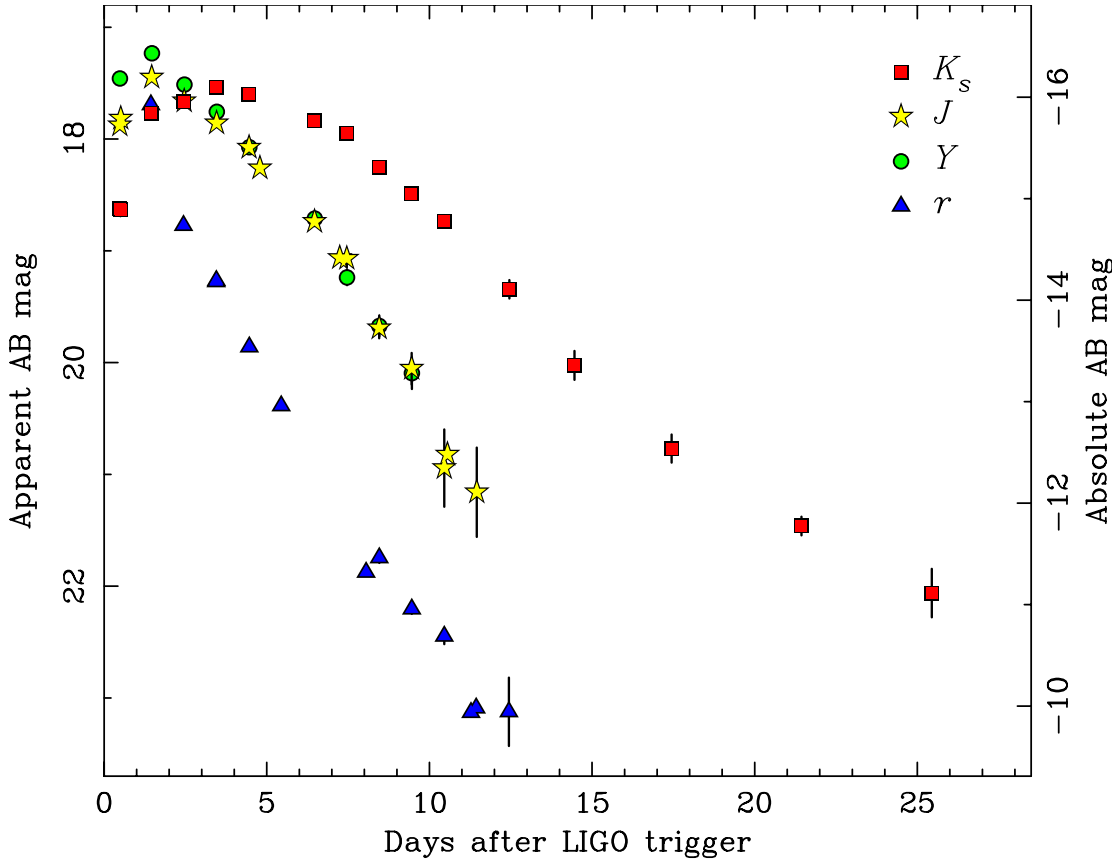


Figure 2. The light curves of AT2017gfo in the r -, Y -, J - and K_s -bands. The absolute magnitude, assuming a distance of 40 Mpc, is shown on the right hand scale. Note, in many cases the error bars are smaller than the symbols.

in the extensive ground-based spectroscopic sequence of Pian et al. (in press. DOI 10.1038/nature24298), although the absence of atmospheric absorption, compared to ground-based spectra is particularly beneficial in revealing clearly the $1.4\ \mu\text{m}$ feature.

3. INTERPRETATION

A natural question is whether any of the light could be due to a synchrotron afterglow, as is generally seen in GRBs. The absence of early X-ray emission (for 40 Mpc distance, $L_X < 5.24 \times 10^{40}\ \text{erg s}^{-1}$ at 0.62 d after the trigger; Evans et al. 2017), in particular, argues that any afterglow must be faint. A simple extrapolation of the early X-ray limit, assuming conservatively that $F_\nu \propto \nu^{-1}$, gives $J > 19.9$. This would at most be a minor contribution to the light observed at early times, so we neglect it here.

We currently lack KN/MN model predictions based on a complete set of likely elements present, and so conclusions are necessarily preliminary. From the large width of the bumps and troughs in the spectrum, which are roughly $\Delta\lambda/\lambda \sim 0.1$ we may infer characteristic ejecta velocity of up to $v \sim 0.1c$, assuming the width is at least

Table 2. Optical and near-IR spectroscopy of the AT2017gfo transient source.

Δt (d)	t_{exp} (s)	Telescope/Camera	Coverage (μm)
(1)	(2)	(3)	(4)
1.47	2600	VLT/MUSE	0.48–0.93
4.86	1812	<i>HST</i> /WFC3-IR	0.8–1.15 (G102)
4.93	1812	<i>HST</i> /WFC3-IR	1.08–1.7 (G141)
7.27	1812	<i>HST</i> /WFC3-IR	0.8–1.15 (G102)
9.43	1812	<i>HST</i> /WFC3-IR	1.08–1.7 (G141)
10.52	1812	<i>HST</i> /WFC3-IR	0.8–1.15 (G102)
10.65	1812	<i>HST</i> /WFC3-IR	1.08–1.7 (G141)

NOTE—Column (1) contains start time of observation with respect to gravitational wave trigger time.

partly due to Doppler spreading (see Fig. 4). Using this value of the velocity and the light-curve rise time (as

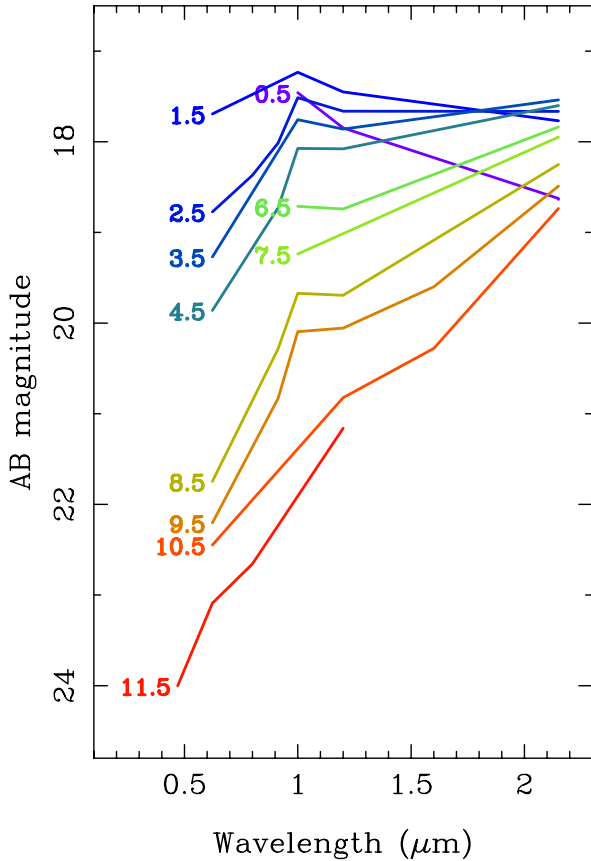


Figure 3. The evolution of the broad-band spectral energy distribution of AT2017gfo over the first ~ 12 days illustrating the marked blue to red trend.

well as the decay time of the optical light curves), the ejecta mass M is approximately (Arnett 1980; Metzger et al. 2010)

$$M \sim 5 \times 10^{-3} M_{\odot} \left(\frac{0.1 \text{ g cm}^{-2}}{\kappa} \frac{v}{0.1 c} \right),$$

where κ is the opacity. This would suggest that only 10^{50} erg of kinetic energy are in the ejecta, despite an energy input of $\sim 10^{53}$ erg during the merger.

The observed peak isotropic bolometric luminosity of $\sim \text{few} \times 10^{41}$ erg/s (integrating between u and K , making use of the UVOT data in Evans et al. 2017) is much higher than predicted for diffusion through an expanding medium following this initial energy input. Continued powering from radioactive decay is required to explain the observations, and is consistent with the much slower decaying infrared light curve. Parametrizing the total heating output of radioactive decay as $\epsilon \equiv fMc^2$ (e.g., Metzger et al. 2010), we can estimate f as

$$f \sim 10^{-6} \frac{L_{\text{peak}}}{10^{41} \text{ erg s}^{-1}} \frac{0.005 M_{\odot}}{M}.$$

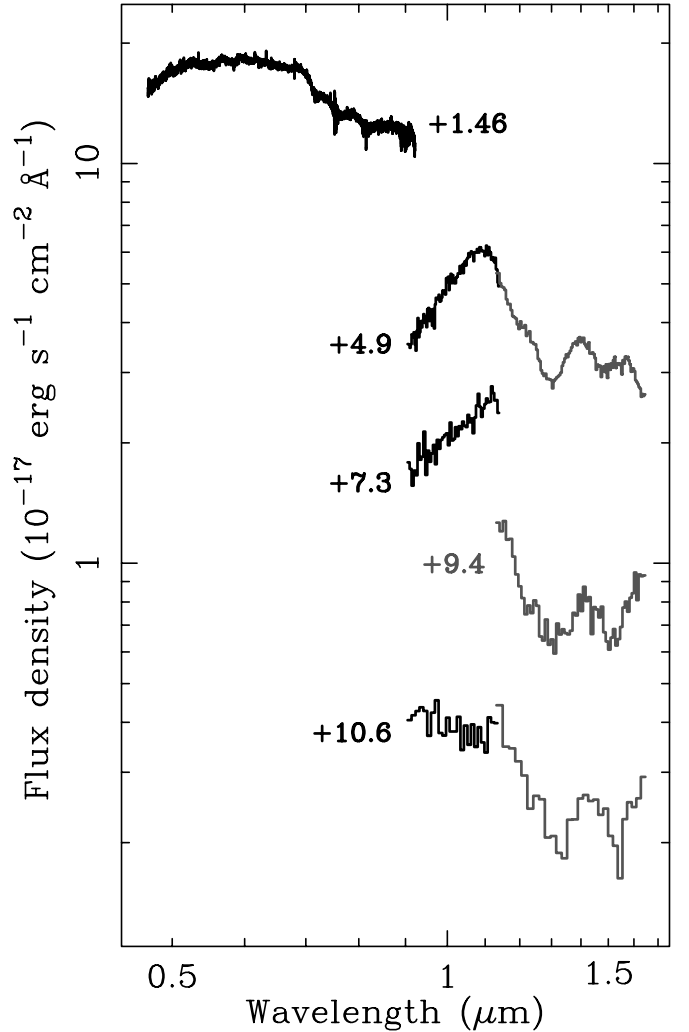


Figure 4. VLT/MUSE and *HST* grism spectra at five epochs (days post-burst labeled). The later *HST* observations have been rebinned to reduce the noise. G141 grism spectra are plotted in a lighter line to distinguish them from the G102 spectra. The spectra are scaled to match our photometric observations, but have not been corrected for Galactic foreground extinction.

The fact that the counterpart was bright, even in the UV, in the first ~ 24 hr after the merger (Evans et al. 2017), indicates a high-mass wind with a high Y_e and hence comparatively low opacity ejecta. This component is likely also dominating the optical emission at early times.

On the other hand, the relatively rapid decline in the J -band compared to the K_s -band light suggests that the latter must be dominated, at least from a few days post-merger, by emission from lanthanide-rich dynamical ejecta, in which nucleosynthesis has proceeded to the third r-process peak.

3.1. Comparison to theoretical models

We compare our observations to the two-component models developed in Wollaeger et al. (2017). These models are computed using the multidimensional radiative Monte Carlo code `SuperNu`⁶ (Wollaeger et al. 2013; Wollaeger & van Rossum 2014; van Rossum et al. 2016) with the set of multigroup opacities produced by the Los Alamos suite of atomic physics codes (Fontes et al. 2015a,b, 2017). Two-component axisymmetric outflow consists of neutron-rich toroidal dynamical ejecta (Rosswog et al. 2014), and a slower spherically-symmetric homologous outflow with higher electron fraction, broadly referred to as “wind”. The r -process nucleosynthesis and radioactive heating are computed using the nuclear network code `WinNet` (Winteler et al. 2012; Kobrin et al. 2012; Thielemann et al. 2011) with reaction rates compilation for the finite range droplet model (FRDM, Möller et al. 1995; Rauscher & Thielemann 2000). Coordinate- and time-dependent thermalization of nuclear energy is calculated using empirical fits developed in Barnes et al. (2016) and Rosswog et al. (2017).

The models are characterized by five parameters: mass and velocity of the dynamical ejecta; mass and velocity of the wind outflow; and inclination angle, which characterizes the remnant orientation. Below we explore a range of these parameters in comparison with the photometric and spectral observations. Fig. 5 shows the photometry compared to a few models with varying individual parameters relative to the baseline model with dynamical ejecta parameters $m_{\text{dyn}} = 0.002 M_{\odot}$, $v_{\text{dyn}} = 0.2 c$, wind parameters $m_{\text{wind}} = 0.015 M_{\odot}$, $v_{\text{wind}} = 0.08 c$, and orientation angle $\theta = 20^{\circ}$. Fig. 5b shows observed spectrum compared to the synthetic spectrum of the baseline model. We conclude that it provides a reasonable fit given the uncertainties in our modeling.

Notice that the wind composition here is moderately neutron-rich, with initial electron fraction $Y_e = 0.27$ (denoted as “wind 2” in Wollaeger et al. (2017)). Such neutron richness produces a composition of elements grouped around the first r -process peak, and, unlike models with higher electron fraction (e.g. “wind 1” in Wollaeger et al. 2017), supplies sufficient nuclear heating to explain the observed early emission in optical bands. Lanthanides in this composition are synthesized only in trace amounts and do not have any noticeable impact on the opacity.

Panel (a) in Figure 5 compares photometric observations in the optical rY -bands and near-IR JK_s -bands to the light curves increasing the dynamical ejecta mass,

with other parameters set to their default values. Although the fit is not perfect, particularly at later times, the evolution to ~ 4 days is reasonably well reproduced, and in J and K_s for longer. Higher values of the dynamical ejecta mass $m_{\text{dyn}} = 0.013 M_{\odot}$ lead to a better fit in the K_s -band near the peak, however the peak epoch shifts to much later time compared to the observed value. Higher dynamical ejecta mass also produces dimmer light curves in all bands at early times.

Panel (b) shows the spherically-symmetric wind-only model with varying mass $m_{\text{wind}} = 0.01 - 0.1 M_{\odot}$. The wind-only model qualitatively captures the behavior in the rYJ -bands, but due to the absence of lanthanides it underproduces light in the K_s -band. This demonstrates the need to include a secondary, neutron-rich outflow with lanthanides, which can redistribute the emission into the infrared bands.

Panel (c) shows the impact of adding a small amount of neutron-rich dynamical ejecta ($m_{\text{dyn}} = 0.002 M_{\odot}$). We can see that the infrared bands are reproduced fairly well, however the addition of highly opaque component leads to the rapid decay in the rY -bands at late times when compared to the observations. On the other hand, our models only explore limited parameter space in terms of the composition; the late time behavior in the optical bands can be cured by tuning the composition of neutron-rich component. Since our intent here is only to demonstrate viability of the red kilonova hypothesis, adjusting the composition is beyond the scope of this paper.

Panel (d) shows the effect of remnant orientation. Notice that the K_s -band becomes insensitive to the orientation after $t = 6$ days, indicating that at this epoch the remnant is transparent to the infrared emission and the photosphere disappears. Emission in the optical bands remains sensitive to the orientation even at $t = 10$ days. Nevertheless, in these conditions, the LTE approximation may not be applicable anymore, so we stop our simulations beyond this epoch.

Panel (e) shows that higher values of nuclear heating (a possibility pointed out in Rosswog et al. 2017; Barnes et al. 2016) lead to only marginal increase in brightness due to small mass of the ejecta and inefficient thermalization in the dilute dynamical ejecta at late times.

3.2. Comparison to other claimed kilonovae

The KN/MN associated with GRB 130603B was observed at 6.94 days rest-frame post-burst (corresponding to 7.0 days at 40 Mpc), with an inferred absolute magnitude $J = -15.35 \pm 0.2$ ($J = 17.66$ at 40 Mpc). This is roughly a factor of three greater than the luminosity in the J -band at the equivalent epoch for the kilonova

⁶ <https://bitbucket.org/drrossum/supernu/wiki/Home>

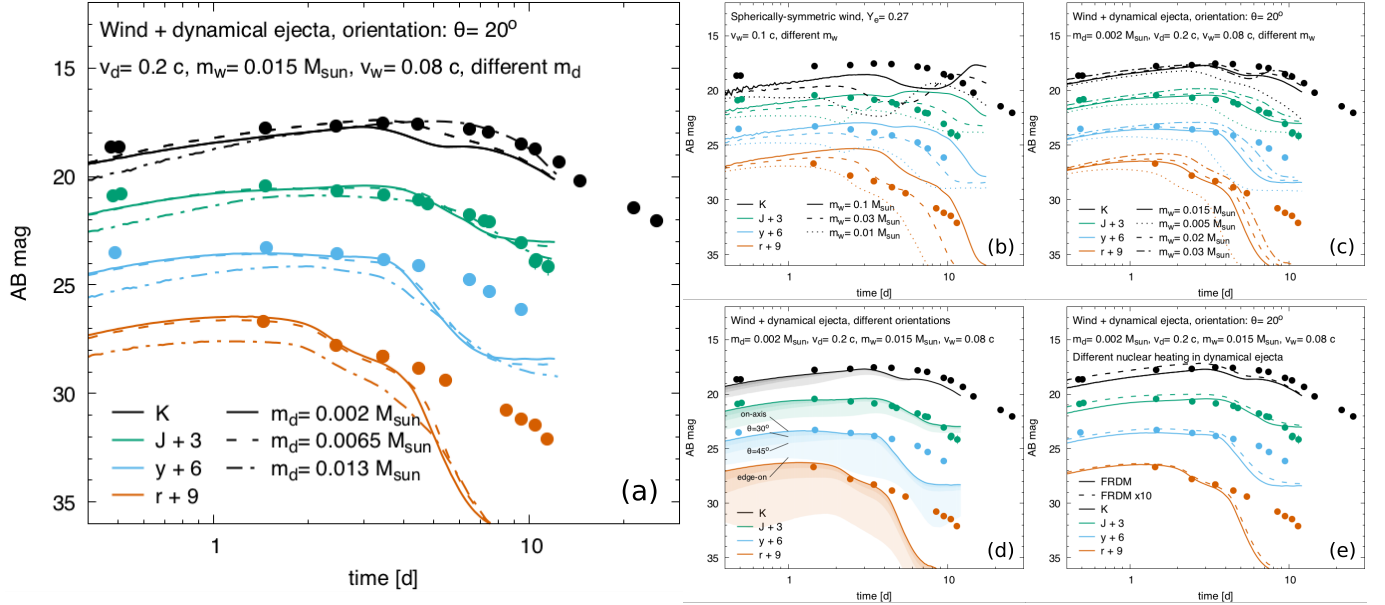


Figure 5. Effect of varying different parameters of the outflow on the light curves in the *ryJK*-bands and spectra: (a) light curves for different dynamical ejecta masses with default wind ejecta model; (b) light curves for a spherically-symmetric wind model with different masses; (c) light curves for different wind masses; (d) impact of the inclination angle: shaded color bands indicate edge-on, 45° and 30° inclination, and the continuous lines represent on-axis view; (e) light curves for nuclear heating from FRDM model (default) compared to the case with $10\times$ nuclear heating in the dynamical ejecta. Filled circles correspond to the observed photometry.

accompanying GW170817/GRB 170817A, and could indicate a higher mass of dynamical ejecta, or additional energy injection from the central remnant (cf. [Kisaka et al. 2016](#); [Gao et al. 2017](#)), in that case.

The candidate KN/MNe discussed by [Yang et al. \(2015\)](#); [Jin et al. \(2015\)](#) and [Jin et al. \(2016\)](#) are more difficult to disentangle from the afterglow contribution, but have absolute AB magnitudes (roughly rest-frame *r*-band) around -14 to -15 in the range 3-10 days post burst, which is again in excess of the emission from AT2017gfo.

These comparisons show that some diversity is to be expected, but it bodes well for the detection of dynamically driven emission components in BNS events at the distances accessible with the advanced GW arrays.

4. DISCUSSION AND CONCLUSIONS

Our densely sampled optical and near-infrared light curves have revealed the emergence of a red kilonova following the merger of two neutron stars in a galaxy at ~ 40 Mpc.

Our modeling of the multi-band light curves indicates the presence of at least two emission components: one with high and one with low opacity. The former is interpreted as being the “tidal part” of the dynamical ejecta that carries the original, very low electron fraction ($Y_e < 0.25$) and results in “strong r-process” producing

lanthanides/actinides. This conclusion is supported by near-IR spectroscopy that shows characteristic features expected for high-velocity lanthanide-rich ejecta. The second component avoids strong r-process via a raised electron fraction ($Y_e > 0.25$) and may arise from different mechanisms such as neutrino-driven winds and/or the unbinding of accretion torus material. In either case the ejecta are exposed for much longer to high-temperature/high neutrino irradiation conditions which drive them to be more proton-rich. Taken together, this lends strong observational support to the idea that compact binary mergers not only produce the “strong r-process” elements, as previously suspected, but also elements across the entire r-process range.

Although the detection of this event in the Advanced LIGO O2 science run is encouraging for future detection rates, the fact that we have not previously seen a similar electromagnetic phenomenon in the low redshift universe indicates they are rare. For example, in over 12 years of operation, *Swift* has only located one short GRB which could be potentially associated with a host galaxy within 150 Mpc, and hence might have been comparable to the AT2017gfo event ([Levan et al. 2008](#)). In that case no counterpart was found despite deep optical and near-infrared followup that would have easily seen a transient as bright as AT2017gfo unless it were heavily dust obscured.

The arguments for BNS and NS-BH mergers as heavy r-process nucleosynthesis factories (Rossfog et al. 2017; Vangioni et al. 2016), including from r-process-enriched dwarf galaxies (Beniamini et al. 2016) and the terrestrial abundance of plutonium-244 (Hotokezaka et al. 2015), are broadly in agreement with other observational constraints: from radio observations of Galactic double neutron-star binaries (e.g., O’Shaughnessy & Kim 2010), from the rate and beaming-angle estimates of short gamma-ray bursts (Fong et al. 2012), and from population synthesis models of binary evolution (Abadie et al. 2010, and references therein).

A single observed merger during the Advance LIGO O2 science run is consistent with this rate, and likely also consistent with the absence of previous serendipitous kilonova observations. On the other hand, the lack of *Swift* observations of other γ -ray bursts like this one places an upper limit on the rate of similar events. Future observations will pin down the rate of such events and their typical yields much more precisely, thus establishing their contribution to the heavy-element budget of the universe.

Finally we note that if this system was moderately close to being viewed pole-on (e.g. $\lesssim 30^\circ$), as may be suggested by the detection of γ -rays, more highly inclined systems could appear fainter in the optical due to the wind component being obscured by more widely distributed lanthanide-rich ejecta. If this is the case, then near-infrared observations could be critical for their discovery. The depth of our short VISTA observations is such that a similar transient would have been seen straight-forwardly to ~ 3 times the distance of NGC 4993, and a more favourable sky location (allowing longer exposures) would have allowed searches to the full BNS detection range (≈ 200 Mpc) expected for Advanced LIGO at design sensitivity.

We thank the support staff at ESO, in particular, Monika Petr-Gotzens, Jonathan Smoker, George Hau, Stephane Brillant and Joe Anderson.

We thank the staff at STScI, in particular, Tricia Royle, Alison Vick, Russell Ryan and Neill Reid.

The observations with VISTA were gathered by the ESO VINROUGE Survey (198.D-2010). Observations

also used from the VISTA Hemisphere Survey (VHS: 179.A-2010).

HST observations were obtained using programs GO 14771 (PI: Tanvir), GO 14804 (PI: Levan), GO 14850 (PI: Troja).

VLT observations were obtained using programmes 099.D-0688, 099.D-0116, 099.D-0622

NRT, KW, PTO, JLO, SR acknowledge support from STFC.

AJL, DS, JDL acknowledge support from STFC via grant ST/P000495/1.

NRT & AJL have project has received funding from the European Research Council (ERC) under the European Union’s Horizon 2020 research and innovation programme (grant agreement no 725246, TEDE, Levan).

IM acknowledges partial support from the STFC.

AdUP, CT, ZC, and DAK acknowledge support from the Spanish project AYA 2014-58381-P. ZC also acknowledges support from the Juan de la Cierva Incorporación fellowship IJCI-2014-21669, and DAK from Juan de la Cierva Incorporación fellowship IJCI-2015-26153.

JH was supported by a VILLUM FONDEN Investigator grant (project number 16599).

PDA, SC and AM acknowledge support from the ASI grant I/004/11/3.

SR has been supported by the Swedish Research Council (VR) under grant number 2016- 03657.3, by the Swedish National Space Board under grant number Dnr. 107/16 and by the research environment grant “Gravitational Radiation and Electromagnetic Astrophysical Transients (GREAT)” funded by the Swedish Research council (VR) under Dnr 2016-06012.

PAE acknowledges UKSA support.

The VISTA observations were processed by CGF at the Cambridge Astronomy Survey Unit (CASU), which is funded by the UK Science and Technology Research Council under grant ST/N005805/1.

This research used resources provided by the Los Alamos National Laboratory Institutional Computing Program, which is supported by the U.S. Department of Energy National Nuclear Security Administration under Contract No. DE-AC52-06NA25396.

Facilities: HST(WFC3), VISTA(VIRCAM), VLT(MUSE, HAWK-I, VIMOS, FORS)

REFERENCES

Abadie et al. 2010, *Classical & Quantum Gravity* 27,

173001

Abbott, B. P., Abbott, R., Abbott, T. D., et al. 2016, *Physical Review Letters*, 116, 061102

Allam, S. et al. 2017, *GRB Coordinates Network*, 21530

- Arnett, W. D. 1980, *Astrophysical Journal* 237, 541
- Astropy Collaboration, Robitaille, T. P., Tollerud, E. J., et al. 2013, *A&A*, 558, A33
- Barnes, J., & Kasen, D. 2013, *ApJ*, 775, 18
- Barnes, J., Kasen, D., Wu, M.-R., & Martínez-Pinedo, G. 2016, *ApJ*, 829, 110
- Beniamini, P. and Hotokezaka, K. and Piran, T. 2016, *Astrophysical Journal* 832, 149
- Berger, E., Fong, W., & Chornock, R. 2013, *ApJL*, 774, L23
- Burbidge, E.M., Burbidge, G.R., Fowler, W.A. & Hoyle, F. 1957, *Reviews of Modern Physics*, 29, 547
- Casey Essick, R. et al. 2017, GRB Coordinates Network, 21509
- Coulter, D. A. et al. 2017, GRB Coordinates Network, 21529
- Eichler, D., Livio, M., Piran, T. & Schramm, D. 1989, *Nature*, 340, 126
- Science in press, DOI: 10.1126/science.aap9580
- Fernandez, R & Metzger, B.D. 2016, *Annual Review of Nuclear and Particle Science*, 66, 23
- Fong, W., Berger, E., Margutti, R. et al. 2012, *Astrophysical Journal* 756, 189
- Fontes, C. J., Fryer, C. L., Hungerford, A. L., et al. 2015, *High Energy Density Physics*, 16, 53
- Fontes, C. J., Zhang, H. L., Abdallah, J., Jr., et al. 2015, *Journal of Physics B Atomic Molecular Physics*, 48, 144014
- Fontes, C. J., Fryer, C. L., Hungerford, A. L., et al. 2017, arXiv:1702.02990
- Freiburghaus, C., Rosswog, S., & Thielemann, F.-K. 1999, *ApJL*, 525, L121
- Gao, H., Zhang, B., Lü, H.-J., & Li, Y. 2017, *ApJ*, 837, 50
- González-Fernández, C., Hodgkin, S. T., Irwin, M. J., González-Solares, E., Kuposov, S. E., Lewis, J. R., Emerson J. P., Hewett, P. C., Yoldas, A. K., Riello, M. 2017, *MNRAS*, in press
- Goriely, S., Bauswein, A., Janka, H.T. 2011, *ApJL*, 738, L32
- Gottlieb, O., Nakar, E. & Piran, T. 2017, arXiv:170510797
- Grossman, D, Korobkin, O, Rosswog, S., Piran, T. 2014, *MNRAS*, 439, 757
- Hotokezaka, K. and Piran, T. and Paul, M. 2015, *Nature Physics* 11, 1042
- Hjorth, J., Sollerman, J., Møller, P., et al. 2003, *Nature*, 423, 847
- Jin, Z.-P., Li, X., Cano, Z. et al. 2015, *ApJL*, 811, L22
- Jin, Z.-P., Hotokezaka, K., Li, X., et al. 2016, *Nature Communications*, 7, 12898
- Just, O., Bauswein, A., Pulpillo, R.A., Goriely, S. & Janka, H.T. 2015, *MNRAS*, 448, 541
- Kasen, D., Badnell, N. R., & Barnes, J. 2013, *ApJ*, 774, 25
- Kasen, D., Fernández, R., & Metzger, B. D. 2015, *MNRAS*, 450, 1777
- Kelley L. Z., Mandel I., Ramirez-Ruiz E., 2013, *PhRvD*, 87, 123004
- Kisaka, S., Ioka, K., & Nakar, E. 2016, *ApJ*, 818, 104
- Korobkin, O., Rosswog, S., Arcones, A. & Winteler, C. 2012, *MNRAS*, 426, 1940
- Kulkarni S., arXiv:astro-ph/0510256
- Lattimer, J. M., & Schramm, D. N. 1974, *ApJL*, 192, L145
- Lazzati, D., Deich, A., Morsony, B. J., & Workman, J. C. 2017, *MNRAS*, 471, 1652
- Levan, A. J., Tanvir, N. R., Jakobsson, P., et al. 2008, *MNRAS*, 384, 541
- Li, L.-X., & Paczyński, B. 1998, *ApJL*, 507, L59
- LIGO & Virgo collaboration. 2017a, GRB Coordinates Network, 21509
- LIGO & Virgo collaboration. 2017b, GRB Coordinates Network, 21513
- McMahon, R. G., Banerji, M., Gonzalez, E., et al. 2013, *The Messenger*, 154, 35
- Mendoza-Temis, J. d. J., Wu, M.-R., Langanke, K., Martínez-Pinedo, G., Bauswein, A., Janka, H.-T. (2015), *PhRvC*, 92, 055805
- Metzger, B. D., Martínez-Pinedo, G., Darbha, S., et al. 2010, *MNRAS*, 406, 2650
- Metzger, B. D. & Berger, E. (2012), *ApJ*, 746, 48
- Metzger, B. D., & Fernández, R. 2014, *MNRAS*, 441, 3444
- Möller, P., Nix, J. R., Myers, W. D., & Swiatecki, W. J. 1995, *Atomic Data and Nuclear Data Tables*, 59, 185
- Nakar, E. 2007, *PhR*, 442, 166
- O’Shaughnessy, R. & Kim, C. 2010, *Astrophysical Journal* 715, 230
- Perego, A., Rosswog, S., Cabezón, R., Korobkin, O., Käppeli, R., Arcones, A. & Liebendörfer, M. 2014, *MNRAS*, 443 3134
- Radice, D., Galeazzi, F., Lippuner, J., Roberts, L., Ott, C.D. & Rezzolla, L. 2016, *MNRAS*, 460, 3255
- Rauscher, T., & Thielemann, F.-K. 2000, *Atomic Data and Nuclear Data Tables*, 75, 1
- Rosswog, S., Thielemann, F.K., Davies., M.B., Benz, W. & Piran, T. 1998, *Nuclear Astrophysics*, 103, astro-ph/9804332
- Rosswog, S. 2005, *ApJ*, 634, 1202
- Rosswog, S., Korobkin, O., Arcones, A., Thielemann, F.-K., & Piran, T. 2014, *MNRAS*, 439, 744
- Rosswog, S., Feindt, U., Korobkin, O., et al. 2017, *Classical and Quantum Gravity*, 34, 104001
- Savchenko, V. et al. 2017, GRB Coordinates Network, 21507
- Schlaflly, E. F., & Finkbeiner, D. P. 2011, *ApJ*, 737, 103

- Sutherland, W., Emerson, J., Dalton, G., et al. 2015, *A&A*, 575, A25
- Tanvir, N. R., Levan, A. J., Fruchter, A. S., et al. 2013, *Nature*, 500, 547
- Thielemann, F.-K., Arcones, A., Käppeli, R., et al. 2011, *Progress in Particle and Nuclear Physics*, 66, 346
- Vangioni, E., Goriely, S., Daigne, F., François, P., & Belczynski, K. 2016, *MNRAS*, 455, 17
- van Rossum, D. R., Kashyap, R., Fisher, R., et al. 2016, *ApJ*, 827, 128
- von Kienlin, A., & Meegan, C. & Goldstein, A. 2017, *GRB Coordinates Network*, 21520
- Wanajo, S., Sekiguchi, Y., Kiuchi, K., Kyutoku, K. & Shibata, M. 2014, *ApJL*, 789, L39
- Winteler, C., Käppeli, R., Perego, A., et al. 2012, *ApJL*, 750, L22
- Wollaeger, R. T., van Rossum, D. R., Graziani, C., et al. 2013, *ApJS*, 209, 36
- Wollaeger, R. T., & van Rossum, D. R. 2014, *ApJS*, 214, 28
- Wollaeger, R. T., Korobkin, O., Fontes, C. J., et al. 2017, *arXiv:1705.07084*
- Yang, B., Jin, Z.-P., Li, X., et al. 2015, *Nature Communications*, 6, 7323
- Yang, S. et al. 2017, *GRB Coordinates Network*, 21531