

**BA – JSC Office of Procurement**

Bradley Niese  
Director

Eric Schell  
Deputy Director

Yvette Villarreal  
Administrative Officer

Sarah Sameei  
Administrative Assistant (CBF)

\*Kellie Craig, Associate Director  
In Detail to JSC

**BG – International Space Station & Commercial LEO**

Adrian Clayton  
Manager\*

Jessica Miller  
Deputy Manager

**BL – Lunar & Planetary Exploration Programs**

John Trahan  
Manager

Renee Falls  
Deputy Manager

**BT – Exploration Systems**

Jeremy Pierre  
Manager

Julie Ellis  
Deputy Manager

**BC – Institutional & Procurement Operations**

Kristi Fryer  
Manager

Jannette Bolden  
Deputy Manager

Krystine Bui  
Deputy Manager

Joy Barckholtz  
Deputy Manager

**BH – Projects Procurement**

Stephen Janney  
Manager

Janet Arkinson  
Deputy Manager

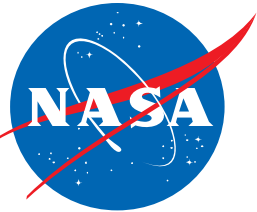
Jesse Brennan  
Deputy Manager

**BR – Operations Support**

Charles Bell  
Manager

Shari Miller  
Deputy Manager

\*On rotation



**BC – Institutional & Procurement Operations**

Kristi Fryer  
Manager

Krystine Bui  
Deputy Manager - BC2

Jannette Bolden  
Deputy Manager - BC3

Joy Barckholtz  
Technical Deputy Manager - BC4

Crystal Jaimes  
Secretary (CBF)

**BC2 – COD Operations**

Caroline Root, Team Lead  
Lara Procknow, CO  
Andrea Browne, CO \*(BT)  
Wendy Fleming, CO  
William Long, CO  
Jennifer Hoff, CS  
Reginald Hayes, CS  
Helen Bell (TTI)  
Andrea Leger (TTI)

Vacant, Team Lead  
Jon Prihoda, CO  
Florence Ahadzie, LWCO  
Kiara Rodriguez CS  
George Griffin, CS  
Alex Huffman, CS\*\*

**BC3 – Procurement Operations & SEB Policy**

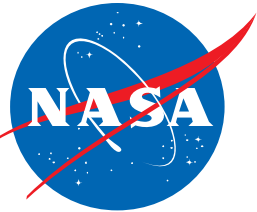
Vacant, Team Lead  
Sharan Jackman, CO  
Jennifer Esparza, CO  
Jennifer Sharp, CS  
LaDonna Brezik (Rothe)  
Hida Horton (ARES)  
Constance Marshall (SSC)  
Lisa Rhudy (SSC)  
Maureen O'Connell (SSC)

Carrie Mulholland, Team Lead  
Chrystal Wiseman, CO  
Sharon Dickens (SSC)

**BC4 – Financial Data Analytics & SEB Process**

Michael Lonchambon, Team Lead  
Gregg Baumer, TA \*

\*On rotation  
\*\*Military Leave



**BG – International Space Station  
& Commercial LEO Programs**

Adrian Clayton\*  
Manager

Jessica Miller  
Acting Manager

Portia Keyes  
Acting Deputy Manager

Monica Barnes  
Secretary (CBF)

Rogelio Curiel, Team Lead  
Special Project

**BG2 – 10K, ESOC**

\*Kelly Rubio, Team Lead  
Karen Dailey, CO  
Bryan Parson, CO  
Arju Yudasto, LCO  
Gregory Hoff, CS  
Tyler Potts, CS  
Kylee Salmeron, CS

**BG3 – HSFTIC, Comm LEO,  
CLD**

Omar Collier, Team Lead  
Maria Callo, LCO  
Eric Festa, CS\*\*  
Ma'Jaylyn {Rowe} Neal, CS  
Toni Douroux (SSC)

**BG4 – CRS, CASIS, OB**

Jason Phillips, Team Lead  
Kendrea Vallien, CO  
Christopher Weiss, LCO  
Saydahli Mejia, CS  
Matthew Windemuth, CS  
Dorann Schooley (SSC)

**BG5 – International, RLLS,  
CMC**

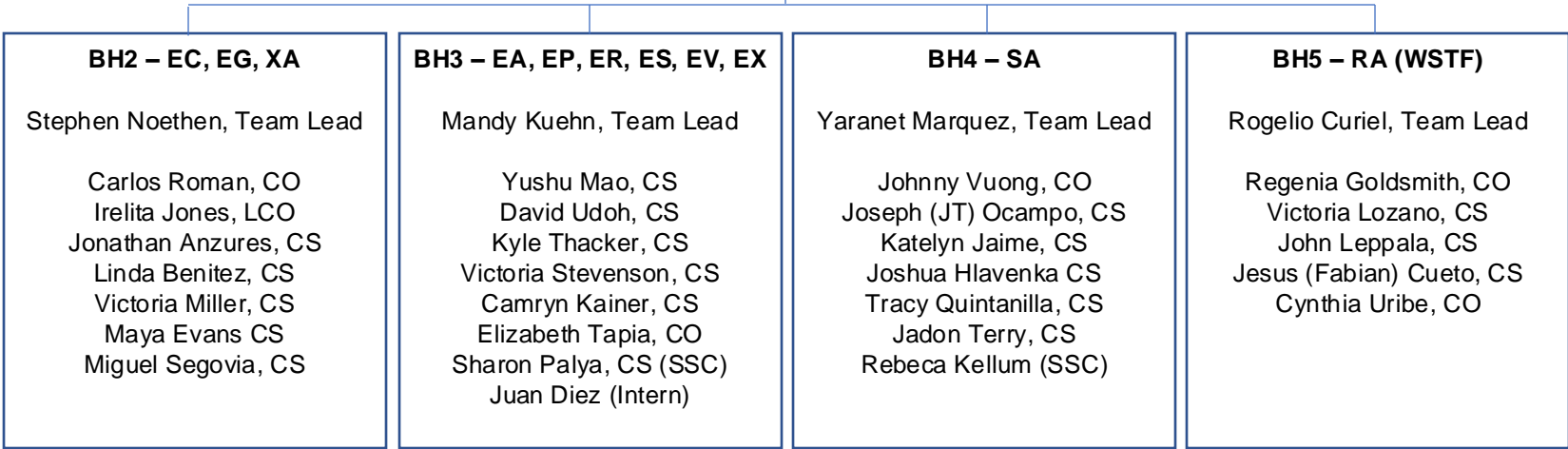
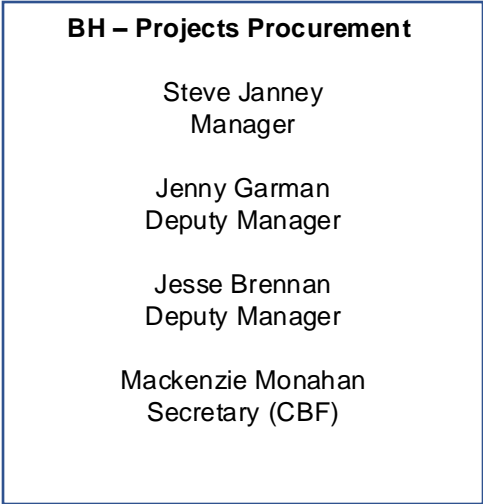
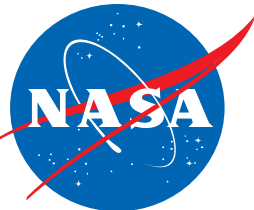
Ashley Chaves, Team Lead  
Darrell Compton, CO  
Kelsey Klinger, CO\*  
Angelo Devine, CS  
Rasha Shreim, CS  
Nicholas Thibodeau, CS

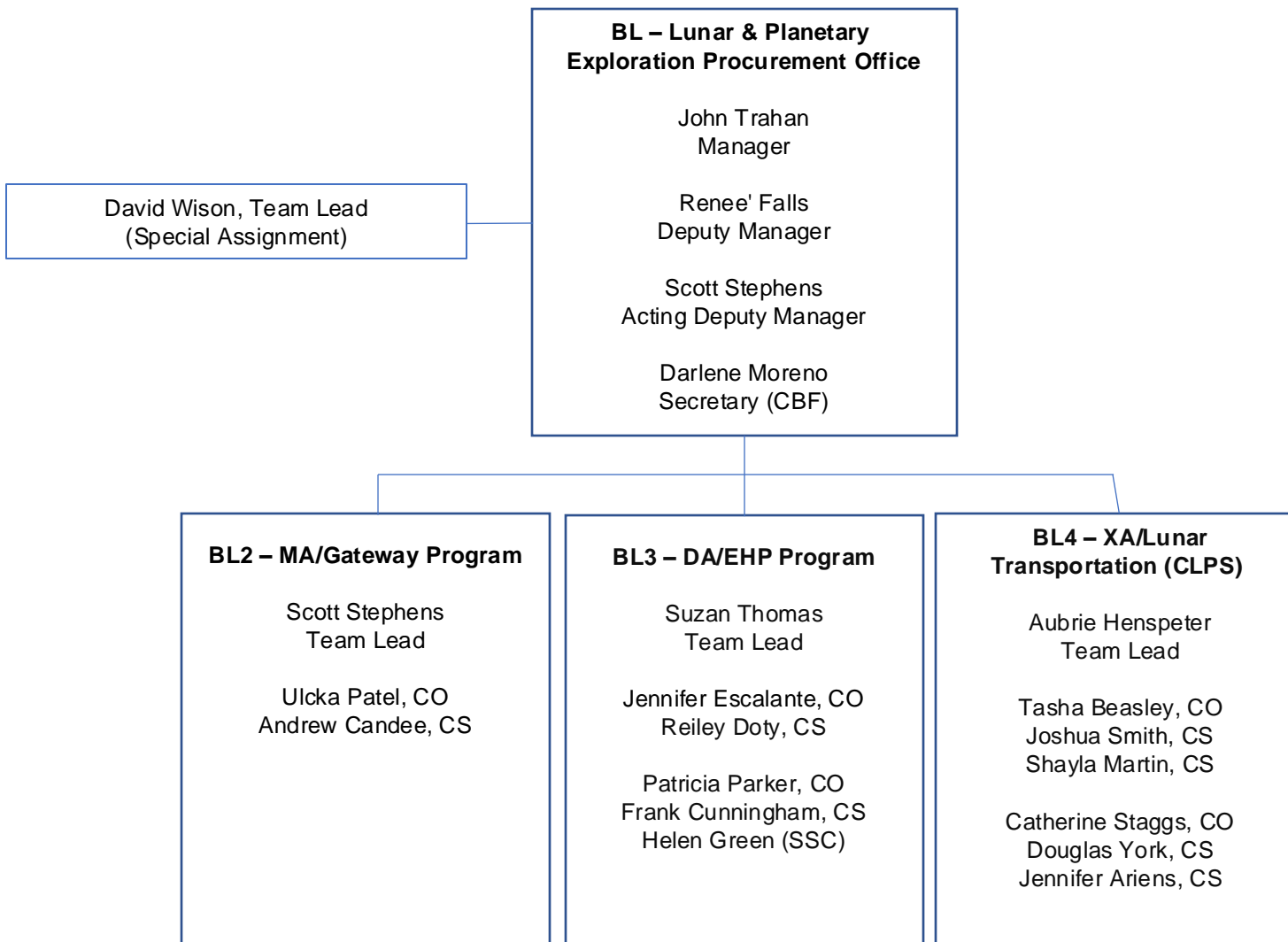
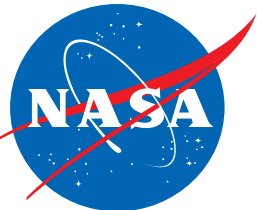
**BG6 – OZ, REMIS**

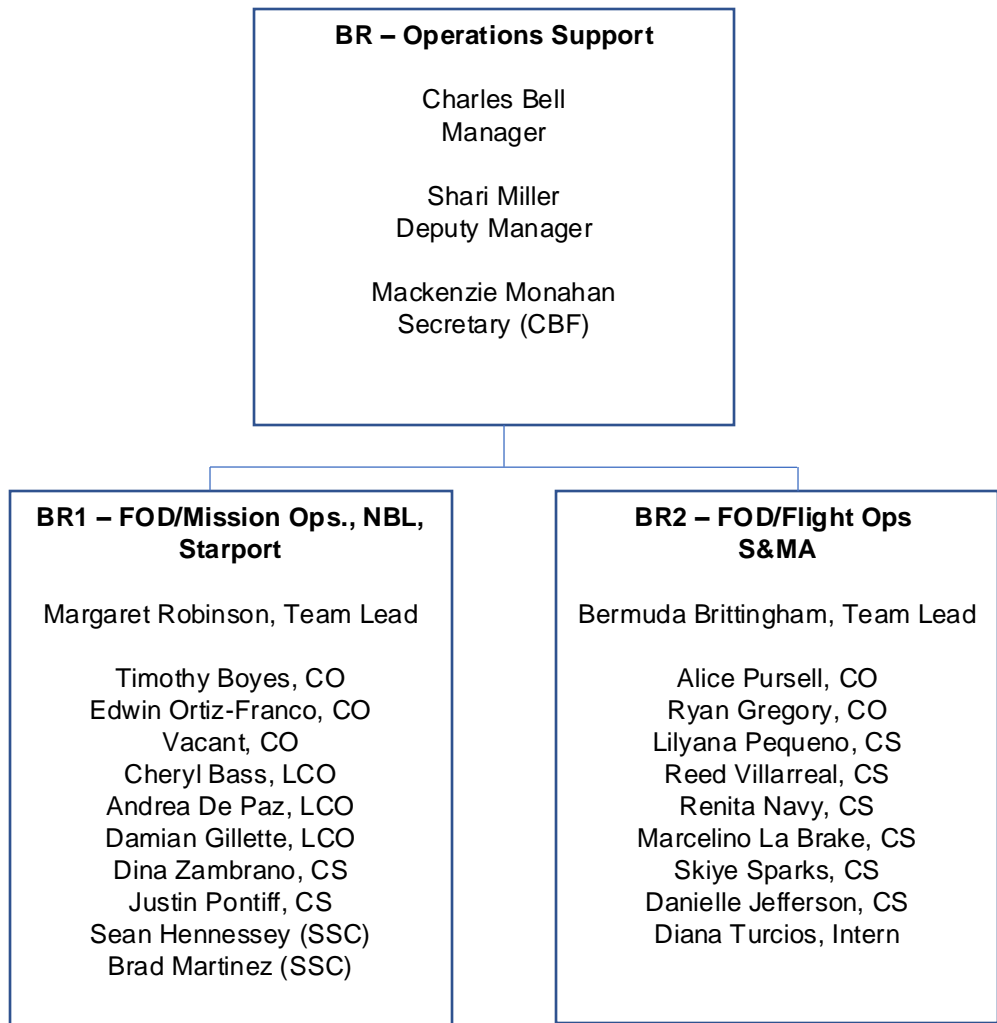
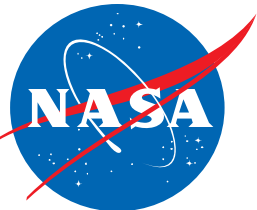
Audrey Montgomery, Team Lead  
Veronica Wedemeyer, LCO  
Amanda Graziosi, CO  
Giorgio Borghesi, CS  
Janelle Hernandez, CS

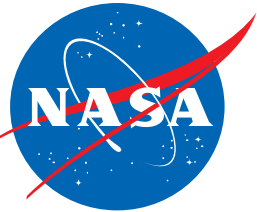
\*on rotation  
\*\* SEB Support

September 2024









**BT – Exploration Systems**  
Jeremy Pierre  
Manager  
  
Julie Ellis  
Deputy Manager  
  
Darlene Moreno  
Secretary (CBF)

**BT2 – MPCV, LAMS**  
\*Kelly Rubio, Team Lead  
  
Denisha Smith, CO  
Kathryn Taylor, CS  
Huyen Nguyen, CS

**BT3 – OPOC, OME, DLA**  
Amber Coyne, Team Lead  
  
Andrea Browne, CO  
Abraham Lacayo, CS  
Anitra Session, CS

*\*On rotation*

**October 2024**