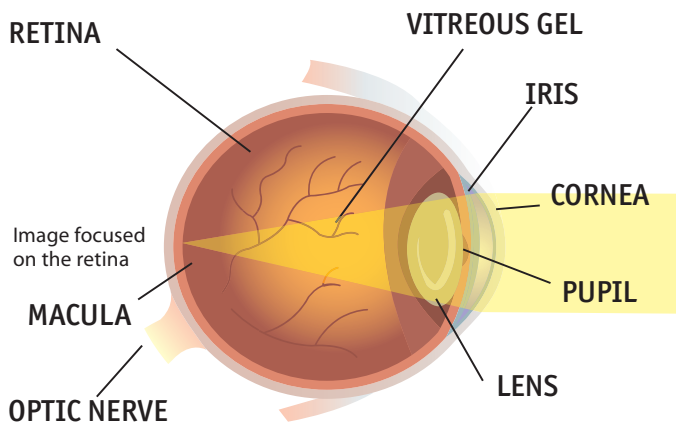


Farsightedness



What is farsightedness?

Farsightedness, also known as hyperopia, is a common type of refractive error where distant objects may be seen more clearly than objects that are near. However, people experience farsightedness differently. Some people may not notice any problems with their vision, especially when they are young. For people with significant farsightedness, vision can be blurry for objects at any distance, near or far.



Normal

What is refraction?

Refraction is the bending of light as it passes through one object to another. Vision occurs when light rays are bent (refracted) as they pass through the cornea and the lens. The light is then focused on the retina. The retina converts the light rays into messages that are sent through the optic nerve to the brain. The brain interprets these messages into the images we see.

What are refractive errors?

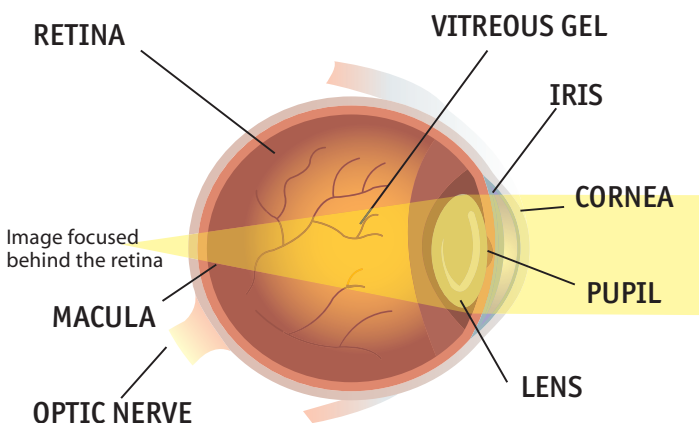
In refractive errors, the shape of the eye prevents light from focusing on the retina. The length of the eyeball (longer or shorter), changes in the shape of the cornea, or aging of the lens can all cause refractive errors.

How does farsightedness develop?

Farsightedness develops in eyes that focus images behind the retina instead of on the retina, which can result in blurred vision. This occurs when the eyeball is too short, which prevents incoming light from focusing directly on the retina. It may also be caused by an abnormal shape of the cornea or lens.

Who is at risk for farsightedness?

Farsightedness can affect both children and adults. It affects about 5 to 10 percent of Americans. People whose parents are farsighted may also be more likely to get the condition.



**Hyperopia
(Farsightedness)**

The cornea and lens bend (refract) incoming light rays so they focus precisely on the retina at the back of the eye.

What are the signs and symptoms of farsightedness?

The symptoms of farsightedness vary from person to person. Your eye care professional can help you understand how the condition affects you.

Common signs and symptoms of farsightedness include the following:

- Headaches
- Eyestrain
- Squinting
- Blurry vision, especially for close objects

How is farsightedness diagnosed?

An eye care professional can diagnose farsightedness and other refractive errors during a comprehensive dilated eye examination. People with this condition often visit their eye care professional with complaints of visual discomfort or blurred vision.



How is farsightedness corrected?

Farsightedness can be corrected with eyeglasses, contact lenses, or refractive surgery.



Eyeglasses are the simplest and safest way to correct farsightedness. Your eye care professional can prescribe lenses that will help correct the problem and help you see your best.



Contact Lenses work by becoming the first refractive surface for light rays entering the eye, causing a more precise refraction or focus. In many cases, contact lenses may provide clearer vision, a wider field of vision, and greater comfort. They are a safe and effective option if fitted and used properly. However, contact lenses may not be the best option for everyone.

If you have certain eye conditions, you may not be able to wear contact lenses. Discuss this matter with your eye care professional.



Refractive Surgery aims to permanently change the shape of the cornea, which will improve refractive vision. Surgery can decrease or eliminate dependency on wearing eyeglasses and contact lenses. There are many types of refractive surgeries and surgical options should be discussed with an eye care professional.

For more information about refractive errors and eye health, visit <http://www.nei.nih.gov/healthyeyes>.